

CONTENTS

7 February 2013 / Vol 494 / Issue No 7435

THIS WEEK

EDITORIALS

5 HEALTH

Unknown territory

Japan should beware loopholes as it begins to regulate stem-cell therapies

5 NUCLEAR WASTE

In a hole

Going underground is the only viable choice for storing nuclear waste

6 ARCHAEOLOGY

Body of evidence

Those who discovered the remains of Richard III deserve their time in the sun



WORLD VIEW

7 Genetic privacy needs a more nuanced approach
Misha Angrist
There are advantages to having your genomic details in the public domain

RESEARCH HIGHLIGHTS

8 SELECTIONS FROM THE SCIENTIFIC LITERATURE

Bacterial gold / Mosquito rivalry / Risk factors for malnutrition / Jet stream on the move / Clock-watching ribosomes / Cats on the prowl / Handy neutrons

SEVEN DAYS

10 THE NEWS IN BRIEF

US seeks to ease immigration laws / Antisense drug wins approval / US collider marked for possible closure / Pfizer spins out animal-health business / Steven Chu steps down / TB vaccine fails clinical trial

CAREERS

137 COMMUNICATION

Two minutes to impress

Researchers need a pitch short enough to deliver in an elevator ride

139 TURNING POINT

Even high-school students can do worthwhile research, says theoretical physicist Yogesh Joglekar

139 CAREER BRIEFS

NEWS IN FOCUS

13 EARTH SCIENCE

Landsat 8 prepares for liftoff

14 NUCLEAR ENERGY

Evidence of geological faults rattle Japan's plans to restart reactors

15 CHEMICAL SAFETY

Hydrogen fluoride leaks raise questions about safety in South Korean industry

16 PARTICLE PHYSICS

Researchers face busy schedule as LHC shuts down for maintenance

19 UNIVERSITIES

UCSF's Mission Bay campus seeks ways to combat lean financial climate

20 DRUG DEVELOPMENT

Public-private consortium aims to re-energize Europe's drug industry

FEATURES

22 ECOLOGY

Survival of the flexible

Extremes of heat and cold could spell the end for tropical species that have had little exposure to either



TRANSLATIONAL SCIENCE

Medicine man

Christopher Austin's bid to jump-start drug discovery **PAGE 24**

TECHNOLOGY

131 CANCER

Tracking metastasis and tricking cancer

New technologies are being used to predict the movement of metastatic cells — and to destroy them

COMMENT



CHEMICAL PHYSICS

Ten cool questions

Ice is central to the workings of the planet yet it still has too many mysteries, says Thorsten Bartels-Rausch **PAGE 27**

29 ENERGY

Build a biomass energy market

Heinz Kopetz

Incentives from government are crucial for making the most of biofuels

BOOKS & ARTS

32 IN RETROSPECT

On Growth and Form

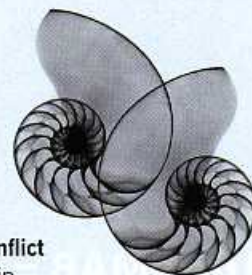
Philip Ball

33 BOOKS IN BRIEF

34 Q&A

Chronicler of conflict

Richard Rhodes in conversation about nuclear weapons and the Spanish Civil War



CORRESPONDENCE

35 The Royal Institution matters / Vital statistics / Bogus species / We've got enough colliders

OBITUARY

37 Brigitte Askonas (1923–2013)

Anne O'Garra

FUTURES

142 Local 623

Donald S Crankshaw

RESEARCH

NEW ONLINE

39 Papers published this week at nature.com

NEWS & VIEWS

40 FORUM: MICROBIOLOGY

The life beneath our feet

Comparing approaches to identify and characterize soil microorganisms
Janet K Jansson; James I Prosser

43 SOLID-STATE PHYSICS

A new spin on spintronics

Reconfigurable computing blocks based on semiconductor junctions
Sayeef Salahuddin SEE LETTER P.72

44 NEUROSCIENCE

Salty sensations

Identification of TMC proteins as salt sensors in *C. elegans*
Bertrand Coste & Ardem Patapoutian
SEE LETTER P.95

45 FUNGAL BIOLOGY

Multiple mating strategies

Isolation of haploid strains of the pathogen *C. albicans*
Neil A R Gow SEE ARTICLE P.55

46 ASTROPHYSICS

Going supernova

Outburst from a massive star 40 days before it exploded as a supernova
Alexander Heger SEE LETTER P.65

REVIEW

49 PHYSICS Spin-orbit coupling in

quantum gases

V Galitski & I B Spielman

ARTICLES

55 FUNGAL GENETICS The 'obligate diploid'

Candida albicans forms mating-competent haploids

M A Hickman et al. SEE N&V P.45

60 IMMUNOLOGY Structural basis for viral

5'-PPP-RNA recognition by human IFIT proteins

Y M Abbas, A Pichlmair, M W Górna, G Superti-Furga & B Nagar

LETTERS

65 ASTRONOMY An outburst from a

massive star 40 days before a supernova explosion

E O Ofek et al. SEE N&V P.46



ON THE COVER

Fire hazard

Grasslands in the Pacific Northwest of North America that have been protected from fire for over a hundred years lose biodiversity. And with it they lose the capacity to recover if they are hit by fire, despite retaining resilience to climate and invasive species. **PAGE 86**

68 APPLIED PHYSICS Reconstructing

state mixtures from diffraction measurements

P Thibault & A Menzel

72 APPLIED PHYSICS Magnetic-

field-controlled reconfigurable semiconductor logic

S Joo et al. SEE N&V P.43

77 INFORMATION TECHNOLOGY Towards

practical, high-capacity, low-maintenance information storage in synthesized DNA

N Goldman et al.

81 CLIMATE SCIENCE Northern Hemisphere

forcing of Southern Hemisphere climate during the last deglaciation

F He et al.

86 ECOLOGY Diversity loss with persistent

human disturbance increases vulnerability to ecosystem collapse

A S MacDougall, K S McCann, G Gellner & R Turkington

90 NEUROSCIENCE Suppression of

neuroinflammation by astrocytic dopamine D2 receptors via α B-crystallin

W Shao et al.

95 NEUROBIOLOGY *tmc-1* encodes a

sodium-sensitive channel required for salt chemosensation in *C. elegans*

M Chatzigeorgiou, S Bang, S W Hwang & W R Schafer SEE N&V P.44

100 STEM CELLS Negligible immunogenicity

of terminally differentiated cells derived from induced pluripotent or embryonic stem cells

R Araki et al.

105 CARDIOVASCULAR BIOLOGY Studying

arrhythmogenic right ventricular dysplasia with patient-specific iPSCs

C Kim et al.

111 DISEASE Obesity-induced

overexpression of miR-802 impairs glucose metabolism through silencing of *Hnf1b*

J-W Kornfeld et al.

116 IMMUNOLOGY Microbiota restricts

trafficking of bacteria to mesenteric lymph nodes by CX₃CR1^{hi} cells

G E Diehl et al.

121 BIOCHEMISTRY ATP-directed capture of

bioactive herbal-based medicine on human tRNA synthetase

H Zhou, L Sun, X-L Yang & P Schimmel

125 DEVELOPMENT Mitotic cell rounding

accelerates epithelial invagination

T Kondo & S Hayashi

130 CORRIGENDUM The zebrafish dorsal axis

is apparent at the four-cell stage

A V Gore et al.

130 CORRIGENDUM How cancer metabolism

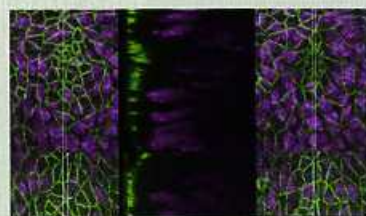
is tuned for proliferation and vulnerable to disruption

A Schulze & A L Harris

130 ERRATUM Making sense of

palaeoclimate sensitivity

PALAEOSSENS Project Members



DEVELOPMENTAL BIOLOGY

Round trip

Cell shape is a key factor in mitotic cells in the early embryo. **PAGE 125**