

# CONTENTS

9 December 2010 / Vol 468 / Issue No 7325

## THIS WEEK

### EDITORIALS

#### 731 RESEARCH FUNDING

**Singapore's salad days are over**  
Economic realities and abrupt policy changes threaten biomedical boom city

#### 731 LAB ANIMALS

**Animal instinct**  
German researchers should sell the idea that animal research saves lives

#### 732 PHARMACEUTICAL RESEARCH

**Give up the ghosts**  
Funding bodies must do more to expose industry-sponsored ghost writers

### WORLD VIEW



**733 Women scientists must speak out**  
*Jennifer Rohn*  
More female pundits needed to balance male-oriented media

### RESEARCH HIGHLIGHTS

#### 734 SELECTIONS FROM THE SCIENTIFIC LITERATURE

Arsenic and old bacteria / Big stars / Laser light moves nanoparticles / Immune system in cancers / Language evolution

### SEVEN DAYS

#### 736 THE NEWS IN BRIEF

Translational medicine institute for NIH? / Google heads for the forest / Kyoto Protocol extension in doubt / GSK halts resveratrol development / HIV/AIDS epidemic may have peaked

## CAREERS

#### 857 PUBLIC HEALTH

**Food-safety sentinels**  
Recent outbreaks of food poisoning mean more work for microbiologists

#### 859 TURNING POINT

Charalampous Kalodimos on the impact of early success

#### 859 CAREER BRIEFS

### NATUREJOBS ADVERTISING FEATURE

Spotlight on cell biology

## NEWS IN FOCUS

#### 739 FISHERIES

Pacific islands unite in bid to restrict mechanized tuna fishing



#### 741 BIOCHEMISTRY

It's a giant leap from arsenic-loving bacteria to extraterrestrials

#### 742 POLICY

Basel meeting sets agenda for defence of animal research

#### 743 MEDICINE

Autism specialists critical of plan to trial antibiotic-based therapy

#### 744 ECOLOGY

Australian river-restoration plan left high and dry as chief resigns

#### 745 ETHICS

The pitfalls of self-plagiarism

#### 746 MOLECULAR BIOLOGY

New routes to stem cells bring prospect of tests in humans a step closer

### FEATURES

#### 752 FOOD

**A taste of things to come?**  
Lab-grown meat could be big business — if it's good enough to eat

### CONDENSED MATTER

## Supersolids

John Reppy doubts claims that ultra-cool helium-4 forms a new kind of quantum matter **PAGE 748**



### TECHNOLOGY

#### 851 PROTEIN-PROTEIN INTERACTIONS

**Interactome under construction**  
Reconstructing the protein interaction networks that underlie all cell functions

## COMMENT

#### 755 PATENT LEGISLATION

**Lessons from Bayh-Dole**  
*Bhaven N Sampat*

#### 757 RESEARCH FUNDING

**More for the research dollar**  
*Jeffrey L Furman, Fiona Murray & Scott Stern*

## BOOKS & ARTS

### CONSERVATION

## One's world

Philip Stott is not convinced by a prince's view of nature **PAGE 764**



#### 760 BIOGRAPHY

**The ABC of computing**  
*John Gilbey*

#### 761 BOOKS IN BRIEF

#### 762 SCULPTURE

**Engineering art**  
*Neil Dodgson*

#### 763 BIBLIOMETRICS

**Measure for measure**  
*Ton van Raan*

### CORRESPONDENCE

765 Pipeline problems / City trees / Make Wikipedia work / Choosing co-authors

### OBITUARY

766 **Michael Tinkham (1928–2010)**  
*Malcolm Beasley*

### FUTURES

862 **The cleverest man in the world**  
*Tony Ballantyne*



# CONTENTS

9 December 2010 / Vol 468 / Issue No 7325

## RESEARCH

### NEW ONLINE

767 Papers published this week at nature.com

### NEWS & VIEWS

#### 768 EVOLUTIONARY BIOLOGY

##### Genomic hourglass

Molecular signatures of the 'phylotypic' stage have been revealed  
Benjamin Prud'homme & Nicolas Gompel [SEE LETTERS PP.811 & 815](#)

#### 769 QUANTUM PHYSICS

##### Hot entanglement

Quantum entanglement can occur at high temperatures  
Vlatko Vedral

#### 770 CANCER

##### Tumour stem cells switch sides

Tumour cells may promote their own blood supply  
Victoria L Bautsch  
[SEE LETTERS PP.824 & 829](#)

#### 772 COSMOLOGY

##### Hydrogen was not ionized abruptly

A new window opens on an early cosmological phase transition  
Jonathan Pritchard & Abraham Loeb [SEE LETTER P.796](#)

#### 773 VIROLOGY

##### One protein, many functions

Structural studies illuminate the activities of Lassa virus nucleoprotein  
Félix A Rey [SEE ARTICLE P.779](#)

#### 775 SOLAR SYSTEM

##### Pluto is again a harbinger

Common icy features of Pluto and Eris raise fresh questions  
S Alan Stern

#### 776 GLACIOLOGY

##### Greenland's glacial basics

Variability in melt input drives ice-sheet speed  
Martin P Lüthi [SEE LETTER P.803](#)

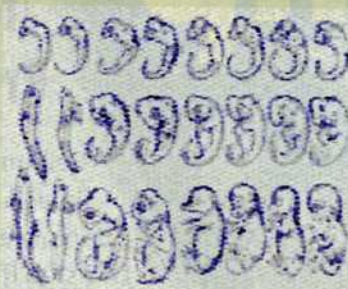
### ARTICLES

#### 779 VIROLOGY Cap binding and immune

evasion revealed by Lassa nucleoprotein structure  
X Qi et al. [SEE N&V P.773](#)

#### 784 STRUCTURAL BIOLOGY Structure of a

bacterial ribonuclease P holoenzyme in complex with tRNA  
N J Reiter et al.



### ON THE COVER

## Test of time

Ernst Haeckel's nineteenth-century drawing prefiguring what became the 'developmental hourglass' concept, recreated from thousands of images of expression patterns from *Drosophila* embryogenesis. The model that assumes divergent — then convergent — development is tested using the tools of genomics. [PAGES 768, 811 & 815](#)

#### 790 CHEMICAL BIOLOGY Quantitative reactivity profiling predicts functional cysteines in proteomes

E Weerapana et al.

### LETTERS

#### 796 ASTRONOMY A lower limit of $\Delta z > 0.06$ for the duration of the reionization epoch

J D Bowman & A E E Rogers  
[SEE N&V P.772](#)

#### 799 APPLIED PHYSICS Snapshots of cooperative atomic motions in the optical suppression of charge density waves

M Eichberger et al.

#### 803 CLIMATE SCIENCE Ice-sheet acceleration driven by melt supply variability

C Schoof [SEE N&V P.776](#)

#### 807 GEOPHYSICS Outer-core compositional stratification from observed core wave speed profiles

G Helffrich & S Kaneshima

#### 811 EVOLUTION Gene expression divergence recapitulates the

#### developmental hourglass model

A T Kalinka et al. [SEE N&V P.768](#)

#### 815 EVOLUTION A phylogenetically based transcriptome age index mirrors ontogenetic divergence patterns

T Domazet-Lošo & D Tautz [SEE N&V P.768](#)

#### 819 BIOPHYSICS Interdependence of behavioural variability and response to small stimuli in bacteria

H Park et al.

#### 824 CANCER Tumour vascularization via endothelial differentiation of glioblastoma stem-like cells

L Ricci-Vitiani et al. [SEE N&V P.770](#)

#### 829 CANCER Glioblastoma stem-like cells give rise to tumour endothelium

R Wang et al. [SEE N&V P.770](#)

#### 834 CELL BIOLOGY Calcium-dependent phospholipid scrambling by TMEM16F

J Suzuki, M Umeda, P J Sims & S Nagata

#### 839 CANCER Impaired hydroxylation of 5-methylcytosine in myeloid cancers with mutant TET2

M Ko et al.

#### 844 BIOPHYSICS Design, function and structure of a monomeric CIC transporter

J L Robertson, L Kolmakova-Partensky & C Miller

### CANCER

## Blood line

How glioblastomas organize their own blood supply. [PAGE 824](#)

