

CONTENTS

10 September 2015 / Vol 525 / Issue No 7568

THIS WEEK

EDITORIALS

157 REFUGEE CRISIS

Keep a welcome

Scientists must do their part in making space for displaced academics

157 ECONOMICS

Money matters

Inequality is in the eye of the beholder

158 COMMUNICATION

Loaded language

Answers often lie in how a question is phrased

WORLD VIEW

159 Reproducibility will not cure what ails science

Daniel Sarewitz

Political interpretation is starting to usurp the 'self-correcting norm' of science

RESEARCH HIGHLIGHTS

160 SELECTIONS FROM THE SCIENTIFIC LITERATURE

Deviation from the standard model / Plastic bad for seabirds / Farm life for Basques / New idea for a journal / Permafrost yields giant virus / Predator-prey balance



SEVEN DAYS

162 THE NEWS IN BRIEF

Pentagon freezes pathogen research / El Niño set to be a record-breaker / Lasker awards announced

CAREERS

279 EMPLOYEE BENEFITS

Plight of the postdoc

Some postdocs are treated simply as cheap labour

281 TRADE TALK

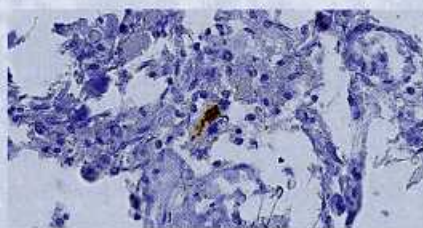
Fund manager

A logical transition from nanophysicist to finance and investment

NATUREJOBS ADVERTISING FEATURE

Spotlight on faculty positions

NEWS IN FOCUS



165 NEURODEGENERATION

Autopsies hint at human transmission of amyloid plaques

166 BIOMEDICAL SCIENCE

US government plans rejig of human-subject protections

167 INFORMATION SECURITY

Cryptographers brace for quantum code breaks

168 FUNDING

Germany bathes in glow of university-competitiveness success

170 CONSERVATION

A graphical guide to the planet's 3 trillion trees



FEATURES

172 STRUCTURAL BIOLOGY

The revolution will not be crystallized

Cryo-electron microscopy is revealing the protein machinery of the cell



ARCHAEOLOGY

The coastal path

Archaeologists scour beaches and oceans for signs of New World colonizers **PAGE 176**

COMMENT



CLIMATE CHANGE

Block carbon

Cities need to manage emissions at street level, say Kevin Robert Gurney *et al.* **PAGE 179**

181 GENDER DISPARITIES

Women are funded more fairly in social science

Paul Boyle and colleagues analyse UK funding data

BOOKS & ARTS

184 GENETICS

Dawkins, redux

Nathaniel Comfort

185 BOOKS IN BRIEF

186 Q&A

The academic satirist

Cartoonist Jorge Cham discusses his latest film

CORRESPONDENCE

187 Endangered species list out of date / How green is green electricity? / Measuring ocean acidification / Vaping controls

OBITUARY

188 Oliver Sacks (1933–2015)

Douwe Draaisma

FUTURES

284 Neuroaugmentation, verb

Felicia Davin



RESEARCH

NEW ONLINE

- 189 Papers published this week at
nature.com

NEWS & VIEWS

190 ECONOMICS

Simple market models fail the test
Variable pricing may amplify spikes in
energy demand
Alex Pentland

191 CELL BIOLOGY

Countercurrents in lipid flow
Lipid exchange enriches phosphatidyl-
serine in the plasma membrane
Anant K Menon & Tim P Levine

193 NEURODEGENERATION

**Amyloid- β pathology induced in
humans**
Possible transmission of some of the
pathology of Alzheimer's disease
Mathias Jucker & Lary C Walker
SEE LETTER P.247

194 ATMOSPHERIC SCIENCE

**Sea-spray particles cause freezing
in clouds**
Organic marine material can act as
ice-nucleating particles
Lynn M Russell SEE LETTER P.234

195 ASTROPHYSICS

**Glimpse into a primitive
stellar nursery**
ALMA detects carbon monoxide
in a nearby, metal-poor galaxy
Adam Leroy SEE LETTER P.218

197 COMPUTATIONAL BIOLOGY

How to catch rare cell types
An algorithm to identify rare cells in
heterogeneous populations
Lu Wen & Fuchou Tang
SEE LETTER P.251

198 CANCER

A moving target
Mathematical modelling reveals cell
motility to be key to tumour growth
Natalia L Komarova
SEE LETTER P.261

199 CANCER

Mutant p53 and chromatin regulation
Gain-of-function p53 boosts production
of histone-modifying enzymes
Carol Prives & Scott W Lowe
SEE ARTICLE P.206



ON THE COVER

Tree count

A 3D view of a 'world of trees' based on a new map of global tree density. Visible features and countries have trees, others (like the Sahara) almost none. Thomas Crowther *et al.* present a map of global tree density, based on over 400,000 ground-sourced measurements, yielding an estimate for the current global tree number of approximately 3 trillion. **PAGES 170 & 201**

ARTICLES

- 201 **FOREST ECOLOGY** Mapping tree
density at a global scale
T W Crowther *et al.* SEE NEWS P.170

- 206 **CANCER** Gain-of-function p53 mutants
co-opt chromatin pathways to drive
cancer growth
J Zhu *et al.* SEE N&V P.199

- 212 **STRUCTURAL BIOLOGY** An atomic
structure of human γ -secretase
X-c Bai *et al.*

LETTERS

- 218 **ASTROPHYSICS** Dense cloud
cores revealed by CO in the low
metallicity dwarf galaxy WLM
M Rubio *et al.* SEE N&V P.195

- 222 **QUANTUM PHYSICS** Quadrature
squeezed photons from a two-
level system
C H H Schulte *et al.*

- 226 **MATERIALS SCIENCE** The most
incompressible metal osmium
at static pressures above 750
gigapascals
L Dubrovinsky *et al.*

- 230 **MATERIALS CHEMISTRY** Computational
design of co-assembling protein-DNA
nanowires

Y Mou, J-Y Yu, T M Wannier, C-L Guo
& S L Mayo

- 234 **ATMOSPHERIC SCIENCE** A marine
biogenic source of atmospheric
ice-nucleating particles

T W Wilson *et al.* SEE N&V P.194

- 239 **PALAEONTOLOGY** Evolutionary origin
of the turtle skull

G S Bever, T R Lyson, D J Field
& B-A S Bhullar

- 243 **NEUROSCIENCE** Arithmetic and local
circuitry underlying dopamine
prediction errors

N Eshel *et al.*

- 247 **NEUROLOGICAL DISORDERS** Evidence for
human transmission of amyloid- β
pathology and cerebral amyloid
angiopathy

Z Jaunmuktane *et al.* SEE N&V P.193

- 251 **COMPUTATIONAL BIOLOGY** Single-cell
messenger RNA sequencing reveals
rare intestinal cell types

D Grün *et al.* SEE N&V P.197

- 256 **CANCER** Distinct EMT programs control
normal mammary stem cells and
tumour-initiating cells

X Ye *et al.*

- 261 **CANCER** A spatial model predicts
that dispersal and cell turnover limit
intratumour heterogeneity

B Waclaw *et al.* SEE N&V P.198

- 265 **PLANT SCIENCES** Allosteric receptor
activation by the plant peptide
hormone phytosulfokine

J Wang *et al.*

- 269 **PLANT SCIENCES** Structural basis of
JAZ repression of MYC transcription
factors in jasmonate signalling

F Zhang *et al.*

- 274 **BIOPHYSICS** Real-time observation of
the initiation of RNA polymerase II
transcription

F M Fazal, C A Meng, K Murakami,
R D Kornberg & S M Block

- 278 **CORRIGENDUM** Passenger deletions
'generate therapeutic vulnerabilities
in cancer

F Muller *et al.*