

CONTENTS

3 February 2011 / Vol 470 / Issue No 7332

THIS WEEK

EDITORIALS

5 ASTRONOMY

Earth 2.0

It's time to decide what a second Earth looks like

5 HISTORY

Preserve the past

German initiative paves way to saving Europe's historical collections

6 POLICY

Tough on truth

The Global Fund's transparent attitude to corruption should be applauded

WORLD VIEW



7 Listen to the lessons of *The King's Speech*

Peter Howell

The Oscar-nominated movie gives hope to adult stammer sufferers

RESEARCH HIGHLIGHTS

8 SELECTIONS FROM THE SCIENTIFIC LITERATURE

Enzyme blocker aids radiotherapy / Where the whales are / One species too many / Light touch for drug delivery / Drumming up a role among wasps

SEVEN DAYS

10 THE NEWS IN BRIEF

GM alfalfa gets green light in the US / Europe lags in innovation / US lands low place in life-expectancy league table / Bill Gates boosts bid to eradicate polio / Amgen buys up BioVex while Abbott and Elan cut back

CAREERS

129 CAREER DECISIONS

Taking the plunge

When — and when not — to bail out from a postdoc position

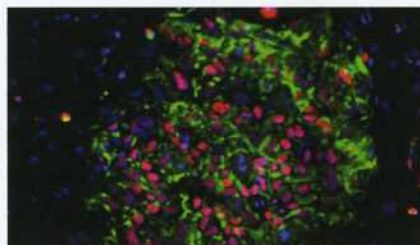
131 TURNING POINT

Tips on how to innovate from scientist-turned-inventor Jonathan Rothberg

NATUREJOBS ADVERTISING FEATURE

Spotlight on postdoctoral positions

NEWS IN FOCUS



13 MEDICINE

Doubts raised over embryonic qualities of induced pluripotent stem cells

14 ASTRONOMY

Telescope gift to Taiwan raises US hackles

15 POLICY

China lays plans for the next ten years of science and innovation

16 POLICY

European advisers seek overhaul of Framework funding programme

17 SPACE SCIENCE

UK space research still far from achieving lift-off

18 RESEARCH POLICY

Social scientists unite to ask the big questions

FEATURES

ASTRONOMY

Planet hunt

Reaping the rewards from the Kepler telescope's watchful eye **PAGE 24**



27 ASTRONOMY

Exoplanets on the cheap

Distant planets are becoming more visible thanks to some creative thinking

COMMENT

CONSERVATION

Easy does it

Get conservation sorted before extracting deep-sea minerals, says Cindy Lee Van Dover **PAGE 31**



BOOKS & ARTS

34 ASTRONOMY

The planet that never was

Neil deGrasse Tyson

35 BOOKS IN BRIEF

36 HISTORY

The plantswoman who dressed as a boy

Sandra Knapp

37 NEUROSCIENCE

Browsing and the brain

Daphne Bavelier & C Shawn Green

38 ART

Abstract relativity

Stefan Michalowski & Georgia Smith

CORRESPONDENCE

39 Negative results count too / Why conservationists must think big / GM maize in Peru / Putting authors in order / Lessons in recycling

OBITUARY

40 Eugene Goldwasser (1922–2010)

Don Wojchowski

FUTURES

134 To the stars

Ken Liu & Shelly Li

RESEARCH

NEW ONLINE

- 41 Papers published this week at nature.com

NEWS & VIEWS

42 DRUG DISCOVERY

Forum: A question of library design

Two experts discuss the best way to find leads for drug discovery

Philip J Hajduk, Warren R J D Galloway & David R Spring

44 PLANT BIOLOGY

Defence at dawn

Temporal tuning of plant immunity

C Robertson McClung [SEE LETTER P.110](#)

45 ASTROPHYSICS

Big black hole found in tiny galaxy

Discovery of a massive black hole in a dwarf star-forming galaxy

Jenny E Greene [SEE LETTER P.66](#)

46 MOLECULAR BIOLOGY

DNA fragility put into context

Links between DNA fragility and replication

Kay Huebner [SEE LETTER P.120](#)

47 THEORETICAL ECOLOGY

Waltz of the weevil

Model studies of an invasive plant in billabongs

Lewi Stone [SEE LETTER P.86](#)

49 GLOBAL CHANGE

Methane and monsoons

An explanation for rising atmospheric methane during the mid-Holocene

Eric W Wolff [SEE LETTER P.82](#)

50 ARCHAEOLOGY

Trailblazers across Arabia

Evidence of a human presence in Arabia 125,000 years ago

Michael D Petraglia

ARTICLES

- 53 **ASTRONOMY** A closely packed system of low-mass, low-density planets transiting Kepler-11

J J Lissauer et al.

- 59 **GENOMICS** Mapping copy number variation by population-scale genome sequencing

R E Mills et al.

LETTERS

- 66 **ASTRONOMY** An actively accreting



ON THE COVER

Six appeal

An artist's impression of a triple transit observed on 26 August 2010 around the extrasolar planet now named Kepler-11. This newly discovered six-planet system resembles our own Solar System in being close to coplanar, but Kepler-11's planets orbit much closer to their star. [PAGES 24 & 53](#)

massive black hole in the dwarf starburst galaxy Henize 2-10

A E Reines, G R Sivakoff, K E Johnson & C L Brogan [SEE N&V P.45](#)

- 69 **PHYSICS** Entanglement in a solid-state spin ensemble

S Simmons et al.

- 73 **APPLIED PHYSICS** Femtosecond X-ray protein nanocrystallography

H N Chapman et al.

- 78 **APPLIED PHYSICS** Single mimivirus particles intercepted and imaged with an X-ray laser

M M Seibert et al.

- 82 **CLIMATE SCIENCE** Late Holocene methane rise caused by orbitally controlled increase in tropical sources

J S Singarayer, P J Valdes, P Friedlingstein, S Nelson & D J Beerling [SEE N&V P.49](#)

- 86 **ECOLOGY** Alternative stable states explain unpredictable biological control of *Salvinia molesta* in Kakadu

S S Schooler, B Salau, M H Julien & A R Ives [SEE N&V P.47](#)

- 90 **IMMUNOLOGY** A thymus candidate

in lampreys

B Bajoghli et al.

- 95 **STEM CELLS** Identification of adult nephron progenitors capable of kidney regeneration in zebrafish

C Q Diep et al.

- 101 **NEUROSCIENCE** Reversing pathological neural activity using targeted plasticity

N D Engineer et al.

- 105 **STEM CELLS** Directed differentiation of human pluripotent stem cells into intestinal tissue *in vitro*

J R Spence et al.

- 110 **PLANT SCIENCES** Timing of plant immune responses by a central circadian regulator

W Wang et al. [SEE N&V P.44](#)

- 115 **CANCER** Oncogenically active *MYD88* mutations in human lymphoma

V N Ngo et al.

- 120 **CANCER** Cell-type-specific replication initiation programs set fragility of the *FRA3B* fragile site

A Letessier et al. [SEE N&V P.46](#)

- 124 **CELL BIOLOGY** MMSET regulates histone H4K20 methylation and 53BP1 accumulation at DNA damage sites

H Pei et al.

ASTRONOMY

On the hole

A peek at an early phase of black hole and galaxy evolution [PAGES 45 & 66](#)

