

# CONTENTS

1 November 2012 / Vol 491 / Issue No 7422

## THIS WEEK

### EDITORIALS

#### 7 ITALY

##### **Murky manoeuvres**

Italy's politicians must adjust their attitude towards science

#### 7 JAPAN

##### **Bad press**

Vigilance and a global perspective are key to science communication

#### 8 SCIENCE AND SOCIETY

##### **Fight the power**

Eritrea illustrates the need for academia to maintain its independence

#### 8 ANNOUNCEMENT

##### **Nature metrics**

Online counts for research papers

### WORLD VIEW



#### 9 How women scientists fare in the Arab world

Rana Dajani

True equality requires recognition of women's roles in the family

### RESEARCH HIGHLIGHTS

#### 10 SELECTIONS FROM THE SCIENTIFIC LITERATURE

Resistant *C. difficile* / 'Black widow' pulsar exposed / Climate engineering boost / Do bears count in the woods?

### SEVEN DAYS

#### 12 THE NEWS IN BRIEF

China goes nuclear / US east coast hit by cyclone

## CAREERS

#### 149 FOOD SCIENCE

##### **A smorgasbord of opportunity**

There are good careers to be had in food science — and you won't go hungry

#### 151 COLUMN

##### **Career fast-forward**

Katharina Genreith

Group leadership can be rewarding

#### 151 CAREER BRIEFS

### NATUREJOBS ADVERTISING FEATURE

Spotlight on genetics

## NEWS IN FOCUS

#### 15 SCIENTIFIC ADVICE

L'Aquila trial result sparks global backlash

#### 16 ENERGY

Siemens' exit from solar market puts Sahara project in doubt

#### 18 ANIMAL RESEARCH

NIH struggles to find homes for retired lab chimps

#### 19 PHYSICS

Mathematical framework offers clues on how particles cope with gravity fluctuations

#### 21 IMMUNOLOGY

Vaccine for hepatitis E is launched

#### 22 FOOD SAFETY

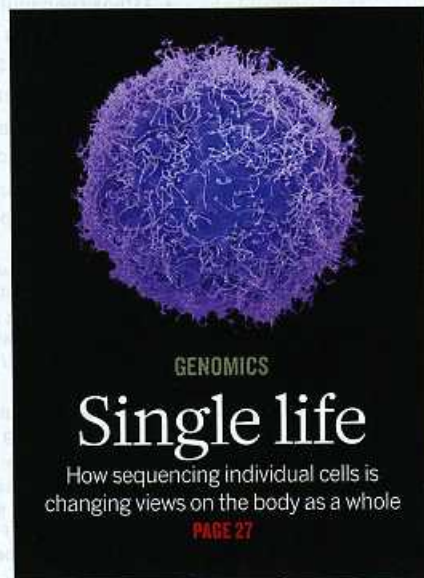
Bid to curb acrylamide in food falters

### FEATURES

#### 24 DEVELOPING WORLD

##### **Eritrea's shattered science**

Government clampdown quashes medical success in nascent scientific enterprise



### TECHNOLOGY

#### 143 EPIGENETICS

##### **Reading the second genomic code**

DNA methylation and other epigenetic mechanisms are tempting targets for drug developers

## COMMENT



#### 31 EXPERIMENTAL BIOLOGY

##### **There's more to life than rats and flies**

Jessica Bolker

Over-reliance on familiar animal models limits progress in many areas of research

#### 33 GENETIC TESTS

##### **Politics and fetal diagnostics collide**

Jaime S King

Non-invasive prenatal genetic tests could fall victim to anti-abortion lobby

#### 35 POLICY

##### **Base sustainable development goals on science**

Gisbert Glaser

The UN working group needs to do its research

### BOOKS & ARTS

#### 36 NEUROSCIENCE

##### **Found in translation**

Charles Fernyhough

#### 37 BOOKS IN BRIEF

#### 38 HISTORY

##### **Realms of gold**

Jennifer Rampling

#### 39 GEOGRAPHY

##### **Going all the way**

Andrew Robinson



### CORRESPONDENCE

#### 40 A citable effect / Call for ZooBank

registration / Ecology in Ecuador / Open collaboration on synthetic probes

### FUTURES

#### 154 Midnight in the cathedral of time

Preston Grassmann

# CONTENTS

1 November 2012 / Vol 491 / Issue No 7422

## RESEARCH

### NEW ONLINE

- 41 Papers published this week at nature.com

### NEWS & VIEWS

- 42 **MATERIALS SCIENCE**  
**Self-assembly gets new direction**  
Specific, directional bonding between colloid particles  
Matthew R. Jones & Chad A. Mirkin  
[SEE ARTICLE P. 51](#)
- 43 **ECOLOGY**  
**Bumblebees and pesticides**  
Chemicals have effects at both the individual-bee and colony level  
Juliet L. Osborne [SEE LETTER P. 105](#)
- 45 **ASTEROIDS**  
**Dark and stormy weather**  
Vesta's surface is contaminated with exogenous carbon-rich material  
Beth Ellen Clark [SEE LETTERS PP. 79 & 83](#)
- 46 **NEUROSCIENCE**  
**Sleep to oblivion**  
Anaesthetics induce sleep-promoting neurons in mouse brain  
Sadaf Shadan
- 47 **OPTICS**  
**Nanotube holograms**  
Two-dimensional image generated by an array of carbon nanotubes  
Stéphane Larouche & David R. Smith
- 48 **ORIGINS OF LIFE**  
**The cooperative gene**  
Cooperation between self-assembling



### ASTRONOMY

## Dawn raid

A detail view of protoplanet Vesta from NASA's space probe Dawn [PAGE 79](#)



RNA molecules  
James Attwater & Philipp Holliger  
[SEE ARTICLE P. 72](#)

### ARTICLES

- 51 **MATERIALS SCIENCE** Colloids with valence and specific directional bonding  
Y. Wang et al. [SEE N&V P. 42](#)
- 56 **GENOMICS** An integrated map of genetic variation from 1,092 human genomes  
The 1000 Genomes Project Consortium
- 66 **STEM CELLS** Generation of functional thyroid from embryonic stem cells  
F. Antonica et al.
- 72 **ORIGINS OF LIFE** Spontaneous network formation among cooperative RNA replicators  
N. Vaidya et al. [SEE N&V P. 48](#)
- 92 **GEOLOGY** Fluvial response to abrupt global warming at the Palaeocene/Eocene boundary  
B. Z. Foreman, P. L. Heller & M. T. Clementz et al.
- 96 **GEOPHYSICS** The elusive Hadean enriched reservoir revealed by  $^{142}\text{Nd}$  deficits in Isua Archaean rocks  
H. Rizo et al.
- 101 **GEOPHYSICS** Fault healing promotes high-frequency earthquakes in laboratory experiments and on natural faults  
G. C. McLaskey, A. M. Thomas, S. D. Glaser & R. M. Nadeau et al.
- 105 **ECOLOGY** Combined pesticide exposure severely affects individual- and colony-level traits in bees  
R. J. Gill, O. Ramos-Rodriguez & N. E. Raine et al. [SEE N&V P. 43](#)
- 109 **NEUROSCIENCE** Intrinsically determined cell death of developing cortical interneurons  
D. G. Southwell et al.
- 114 **GENOMICS** In vivo genome editing using a high-efficiency TALEN system  
V. M. Bedell et al.
- 119 **DISEASE** Host-microbe interactions have shaped the genetic architecture of inflammatory bowel disease  
A list of authors and their affiliations appears at the end of the paper
- 125 **VIROLOGY** Codon-usage-based inhibition of HIV protein synthesis by human schlafen 11  
M. Li et al.
- 129 **IMMUNOLOGY** Vaccine-induced  $\text{CD8}^+$  T cells control AIDS virus replication  
P. A. Mudd et al.
- 134 **ENVIRONMENT** The molecular basis of phosphate discrimination in arsenate-rich environments  
M. Elias et al.
- 138 **STRUCTURAL BIOLOGY** The spatial architecture of protein function and adaptation  
R. N. McLaughlin Jr, F. J. Poelwijk, A. Raman, W. S. Gosal & R. Ranganathan

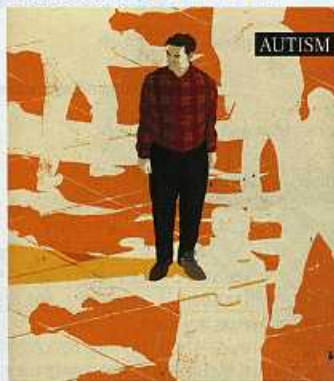
### LETTERS

- 79 **ASTRONOMY** Distinctive space weathering on Vesta from regolith mixing processes  
C. M. Pieters et al. [SEE N&V P. 45](#)
- 83 **ASTRONOMY** Dark material on Vesta from the infall of carbonaceous volatile-rich material  
T. B. McCord et al. [SEE N&V P. 45](#)
- 87 **PHYSICS** Observation of spatially ordered structures in a

PENGCHENG SONG, YU WANG & YUFENG WANG

## AUTISM

### natureOUTLOOK



Illuminating a diverse disorder

Turn to page 40

#### S2 EPIDEMIOLOGY

##### Complex disorder

Awareness, funding and research into autism are on the rise

#### S4 GENETICS

##### Searching for answers

Multidisciplinary collaborations aim to solve autism's complexity

#### S7 CHILD DEVELOPMENT

##### The first steps

Studying the siblings of children with autism points to better detection

#### S10 ADULTHOOD

##### Life lessons

Research is maturing along with its participants

#### S12 DIAGNOSIS

##### Redefining autism

Draft diagnostic guidelines are a matter of contention



Tracking the development of children is helping to define autism and the factors at play (page S7).

#### S14 TREATMENTS

##### In the waiting room

Clinicians are eager for new drugs developed specially to treat the symptoms of autism

#### S17 PERSPECTIVE

##### Imaging autism

Nicholas Lange cautions against using brain scans to diagnose autism before the underlying biology is understood

#### S18 CULTURE

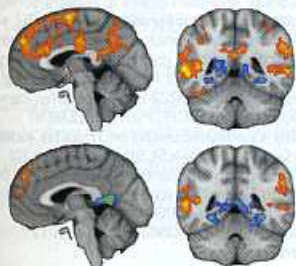
##### Diverse diagnostics

Assessing a child's behaviour to diagnose autism can be done only in the context of cultural norms

#### S20 PERSPECTIVE

##### Brain scans need a rethink

Evidence for a leading theory on the causes of autism is flawed, say Ben Deen and Kevin Pelphrey



**MORE ONLINE**

#### NATURE.COM

• The Autism Enigma, *Nature* and several sister journals publish news and comment on the efforts to understand autism:  
[go.nature.com/ypo9fB](http://go.nature.com/ypo9fB)

#### COLLECTION

• Visit our online edition, which includes an exclusive collection of research articles on autism:  
[go.nature.com/suc7L5](http://go.nature.com/suc7L5)