

# CONTENTS

3 April 2014 / Vol 508 / Issue No 7494

## THIS WEEK

### EDITORIALS

- 7 **CLIMATE SCIENCE**  
**Brace for impacts**  
Adaptation to climate change is key
- 7 **BIOLOGY**  
**Natural decline**  
Where have all the naturalists gone?
- 8 **NEUROSCIENCE**  
**Brain waves**  
Big neuroscience comes of age



### WORLD VIEW

9 **Political borders should not hamper wildlife**  
*Aaron M Ellison*  
At-risk species have lost out in the past to disruptive national border changes and could do so again

### RESEARCH HIGHLIGHTS

- 10 **SELECTIONS FROM THE SCIENTIFIC LITERATURE**  
*Drosophila* connectome / Finger sucking good for neonates / Birds suffer in the city / In-depth study of whales / Mid-East origin for cattle

### SEVEN DAYS

- 12 **THE NEWS IN BRIEF**  
Misconduct in stem-cell papers / Japanese whaling 'unscientific' / Ebola outbreak spreads / US plans methane cuts

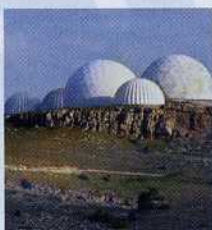
## CAREERS

- 139 **TRANSLATIONAL RESEARCH**  
**Cancer killers**  
Basic research is still key to the development of cancer immunotherapy
- 141 **TURNING POINT**  
Geochemist Liping Qin finds that cool rocks excite graduate students in China
- 141 **CAREER BRIEFS**

### NATUREJOBS ADVERTISING FEATURE

Spotlight on cancer research

## NEWS IN FOCUS



- 15 **POLICY**  
Turbulent times for Ukrainian science
- 16 **DRUG DEVELOPMENT**  
Disease definitions drive orphan drugs
- 19 **SPACE**  
European researchers home in on choice for landing site on Mars
- 20 **CLIMATE**  
Prospect of El Niño highlights data deficiencies
- 22 **EPIDEMIOLOGY**  
Chemical patterns in DNA hint at deeper information on disease

## FEATURES

### CANCER TREATMENT

## The killer within

Can the immune system be marshalled to fight cancer? **PAGE 24**



- 28 **COSMOLOGY**  
**Polar star**  
How John Kovac's team captured evidence for an inflationary Universe

### TECHNOLOGY

- 133 **CANCER**  
**Sharp shooters**  
Recent developments suggest that charged-particle radiation therapy has the potential to take radiation oncology to new levels

## COMMENT



- 31 **HUMAN EVOLUTION**  
**Fifty years after *Homo habilis***  
*Bernard Wood*  
Handy man's place in human — or hominin — evolution remains as controversial as ever
- 33 **SUSTAINABLE DEVELOPMENT**  
**Mobilize citizens to track sustainability**  
*Angel Hsu, Omar Malik, Laura Johnson & Daniel C Esty*  
Collecting the data is crucial to UN efforts on the environment
- 36 **POLICY**  
**Free Indian science**  
*Mathai Joseph & Andrew Robinson*  
Bloated bureaucracy is suffocating a once dynamic research sector

## BOOKS & ARTS

- 39 **TUDOR TECHNOLOGY**  
**Shakespeare and science**  
*Jennifer Rampling*
- 41 **EARTH SYSTEMS**  
**No place like home**  
*Tim Lenton*
- 42 **PSYCHOLOGY**  
**The clamorous mind**  
*Susanne Ahmari*
- 43 **BOOKS IN BRIEF**

## CORRESPONDENCE

- 44 ArXiv exposes fakery / Better science advice / Journal-driven data sharing / Harnessing free computer power

## FUTURES

- 144 **microFutures**  
Prizewinning science fiction in 200 characters or less





# CONTENTS

3 April 2014 / Vol 508 / Issue No 7494

## RESEARCH

### NEW ONLINE

45 Papers published this week at nature.com

### NEWS & VIEWS

#### 46 CANCER

##### Disabling defences in the brain

Serpins promote survival and vascular co-option of metastasized cells  
*Janine T Erler*

#### 47 IMMUNOLOGY

##### A is for immunity

Vitamin A deficiency in pregnancy impairs lymphoid development in offspring  
*Gérard Eberl* [SEE LETTER P.123](#)

#### 48 SOLAR SYSTEM

##### Ring in the new

A ring system around a Centaur object  
*Joseph A Burns* [SEE LETTER P.72](#)

#### 50 VASCULAR BIOLOGY

##### Brain vessels squeezed to death

Pericyte constriction regulates capillary blood flow in the brain  
*Daniel M Greif & Anne Eichmann*  
[SEE ARTICLE P.55](#)

#### 51 PLANETARY SCIENCE

##### A chronometer for Earth's age

Measuring the time at which Earth finished forming  
*John Chambers* [SEE LETTER P.84](#)

#### 52 CANCER

##### Clonal cooperation

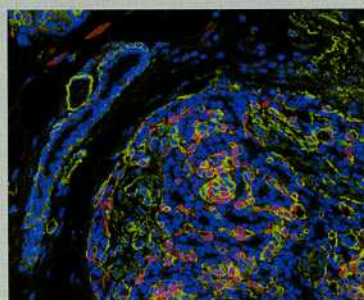
Mammary tumours that require paracrine interactions between clones  
*Kornelia Polyak & Andriy Marusyk*  
[SEE LETTER P.113](#)

### ARTICLES

55 **VASCULAR BIOLOGY** Capillary pericytes regulate cerebral blood flow in health and disease  
*C N Hall et al.* [SEE N&V P.50](#)

61 **STRUCTURAL BIOLOGY** Mechanism of Tc toxin action revealed in molecular detail  
*D Meusch et al.*

66 **MOLECULAR BIOLOGY** Poly(A)-tail profiling reveals an embryonic switch in translational control  
*A O Subtelny, S W Eichhorn, G R Chen, H Sive & D P Bartel*



#### ON THE COVER

## Twin threat

Mammary tumour cells from a donor mouse (red) expressing a lineage marker (green) comingle with host-derived epithelial cells. The mammary duct on the left retains its architecture in the absence of infiltration by the donor-derived tumour subclone. Interacting subclones can make a tumour hard to treat. [PAGES 52 & 113](#)

### LETTERS

72 **PLANETARY SCIENCE** A ring system detected around the Centaur (10199) Chariklo  
*F Braga-Ribas et al.* [SEE N&V P.48](#)

76 **ATOMIC AND MOLECULAR PHYSICS** Efficient rotational cooling of Coulomb-crystallized molecular ions by a helium buffer gas  
*A K Hansen et al.*

80 **OPTICAL PHYSICS** Coherent control of the waveforms of recoilless  $\gamma$ -ray photons  
*F Vagizov, V Antonov, Y V Radeonychev, R N Shakhmuratov & O Kocharovskaya*

84 **GEOPHYSICS** Highly siderophile elements in Earth's mantle as a clock for the Moon-forming impact  
*S A Jacobson et al.* [SEE N&V P.51](#)

88 **NEUROSCIENCES** The hippocampal CA2 region is essential for social memory  
*F L Hitti & S A Siegelbaum*

93 **STEM CELLS** Mouse liver repopulation with hepatocytes generated from human fibroblasts  
*S Zhu et al.*

98 **CANCER** Constitutional and somatic rearrangement of chromosome 21 in acute lymphoblastic leukaemia  
*Y Li et al.*

103 **CANCER** XBP1 promotes triple-negative breast cancer by controlling the HIF1 $\alpha$  pathway  
*X Chen et al.*

108 **CANCER** Metabolic determinants of cancer cell sensitivity to glucose limitation and biguanides  
*K Birsoy et al.*

113 **CANCER** Tumour cell heterogeneity maintained by cooperating subclones in Wnt-driven mammary cancers  
*A S Cleary, T L Leonard, S A Gestl & E J Gunther* [SEE N&V P.52](#)

118 **CANCER** Reversible and adaptive resistance to BRAF(V600E) inhibition in melanoma  
*C Sun et al.*

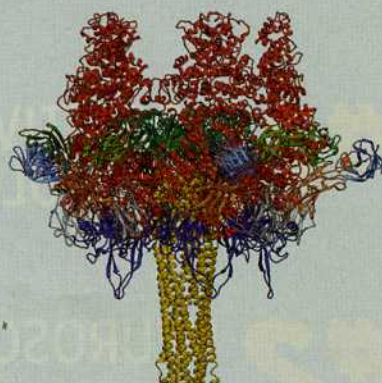
123 **IMMUNOLOGY** Maternal retinoids control type 3 innate lymphoid cells and set the offspring immunity  
*S A van de Pavert et al.* [SEE N&V P.47](#)

128 **PHYSIOLOGY** Mitoflash frequency in early adulthood predicts lifespan in *Caenorhabditis elegans*  
*E-Z Shen et al.*

#### STRUCTURAL BIOLOGY

## Toxic mix

The structure of entire *Photorhabdus luminescens* Tc toxin, its subunits and its complexes. [PAGE 61](#)



THOMAS ABRAHAM/PENN STATE IMAGING CORE