

CONTENTS

26 April 2012 / Vol 484 / Issue No 7395

THIS WEEK

EDITORIALS

415 ETHICS

For better or worse

The pros and cons of scientific research should be debated openly

415 SPACE

Chase the dragon

Commercial space flight points the way forward for NASA

416 HEALTH & MEDICINE

Suckers for success

The leech is inching its way back into medical practice



WORLD VIEW

417 Commercial space flight is a game-changer

Alan Stern

Commercial space ventures could be good for science as well as for business

RESEARCH HIGHLIGHTS

418 SELECTIONS FROM THE SCIENTIFIC LITERATURE

Graphene lasers / Hyrax song / Gutless in Elba / Fire-resistant trees / Arctic warming / Bacterial resistance spreads

SEVEN DAYS

420 THE NEWS IN BRIEF

Mexican volcano rumbles on / GSK makes play for Human Genome Sciences / Last flight for the space shuttle / Vioxx court case finally settled / Clean tech feels the pinch

CAREERS

553 TECHNOLOGY

A lab app for that

Smartphones and iPads could become the lab notebooks of choice

555 TURNING POINT

Astrophysicist Lisa Kaltenegger is taking exoplanetary science to Germany

NATUREJOBS ADVERTISING FEATURE

Spotlight on immunology/vaccines

NEWS IN FOCUS

423 ENVIRONMENTAL MONITORING

Demise of Envisat puts pressure on Europe's struggling satellite programme



424 CONSERVATION

Zoologists latch on to leeches as a way to track endangered species

426 SPACE SCIENCE

Shuttle's successors gear up for cargo runs to space station

428 GENETICS

Analyses from high-throughput RNA sequencing come under fire

429 PLANETARY SCIENCE

Simulations rewrite history of asteroid bombardment on Earth and Moon

430 POLICY

Mexico sets tough targets for climate change

FEATURES

436 BOTANY

Rare specimens

The old-style plant collector is a dying breed — what will seed the next generation?



ETHICS

Good science, bad science

From isotope enrichment to fetal screening, some research poses a major ethical dilemma

PAGE 432

COMMENT



BOOKS & ARTS

Spring books

PSYCHOLOGY The aesthetic brain

Simon Mawer PAGE 444

OCEANOGRAPHY Ultra marine

Stephen R Palumbi PAGE 445

PHILOSOPHY What we don't know

Michael Shermer PAGE 446

NEW IN PAPERBACK PAGE 448

BEHAVIOUR Life interwoven

James H Fowler PAGE 449

ROBOTICS Enter the evolvabot

Noel Sharkey PAGE 449

FICTION Wondrous machines

Minsoo Kang PAGE 451

ECOLOGY Trashed world

Sonja Vermeulen PAGE 452

CORVID COGNITION Feathered apes

Nicola Clayton PAGE 453

439 METHODS

A recipe for disaster

Anna Git

Treat commercial reagents with caution

440 METHODS

Understand how it works

David W Piston

The downside of lab automation

442 RESEARCH

Make social sciences relevant

Luk Van Langenhove

How the social sciences should tackle global challenges

CORRESPONDENCE

455 Conservation farming / Museum DNA /

Personal DNA data / Indian science academies need to act

FUTURES

558 Perchance to bleam

Ronald D Ferguson

CONTENTS

26 April 2012 / Vol 484 / Issue No 7395

RESEARCH

NEW ONLINE

457 Papers published this week at nature.com

NEWS & VIEWS

458 FORUM: IMMUNOLOGY

Allergy challenged

Parasites versus toxins in the evolution of allergic responses

David Artis, Rick M Maizels &

Fred D Finkelman **SEE PERSPECTIVE P.465**

459 DEVELOPMENTAL BIOLOGY

Heart under construction

Surprising patterns of heart growth in zebrafish

Deborah Yelon **SEE ARTICLE P.479**

461 QUANTUM PHYSICS

Simulating magnetism

Using lattice vibrations to simulate magnetic interactions

Christian Roos **SEE LETTER P.489**

462 ASTROPHYSICS

Stars throw their weight in old galaxies

Initial mass function of elliptical and lenticular galaxies

Nate Bastian **SEE LETTER P.485**

463 PROTEIN ENGINEERING

Tighter ties that bind

IL-2 superkines that bind with high potency to receptors lacking CD25

Eric T Boder **SEE LETTER P.529**

PERSPECTIVE

465 IMMUNOLOGY Allergic host defences

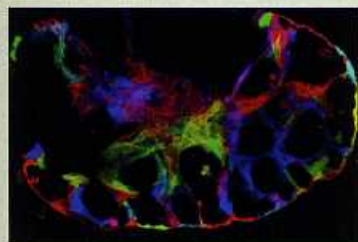
N W Palm, R K Rosenstein & R Medzhitov

SEE N&V P.458

DEVELOPMENTAL BIOLOGY

On the beat

A key role for cardiomyocytes in shaping the developing heart. **PAGE 479**



ON THE COVER

On allergy

The assumption that allergic reactions are misfires of an immune system evolved to repel invasive parasites could be wrong. That's the argument set out in this week's Perspective. Rather, allergies come as part of a package that protects us against environmental toxins. **PAGES 458 & 465**



ARTICLES

473 **NEUROSCIENCE** Multiple dynamic representations in the motor cortex during sensorimotor learning
D Huber et al.

479 **DEVELOPMENTAL BIOLOGY** Clonally dominant cardiomyocytes direct heart morphogenesis
V Gupta & K D Poss
SEE N&V P.459

LETTERS

485 **ASTRONOMY** Systematic variation of the stellar initial mass function in early-type galaxies
M Cappellari et al. **SEE N&V P.462**

489 **PHYSICS** Engineered two-dimensional Ising interactions in a trapped-ion quantum simulator with hundreds of spins
J W Britton et al. **SEE N&V P.461**

493 **PHYSICS** Thermal and electrical transport across a magnetic quantum critical point
H Pfau et al.

498 **EARTH SCIENCES** Deposition of 1.88-billion-year-old iron formations as a consequence of rapid crustal growth
B Rasmussen et al.

502 **CLIMATE SCIENCE** Antarctic ice-sheet loss driven by basal melting of ice shelves
H D Pritchard et al.

506 **EVOLUTION** Sexual selection enables long-term coexistence despite ecological equivalence
L K M'Gonigle, R Mazzucco, S P Otto & U Dieckmann

510 **IMMUNOLOGY** NLRP10 is a NOD-like receptor essential to initiate adaptive immunity by dendritic cells
S C Eisenbarth et al.

514 **IMMUNOLOGY** Pathogen-induced human T_H17 cells produce IFN- γ or IL-10 and are regulated by IL-1 β
C E Zielinski et al.

519 **VIROLOGY** IFITM3 restricts the morbidity and mortality associated with influenza
A R Everitt et al.

524 **IMMUNOLOGY** Infection regulates pro-resolving mediators that lower antibiotic requirements
N Chiang et al.

529 **IMMUNOLOGY** Exploiting a natural conformational switch to engineer an interleukin-2 'superkine'
A M Levin et al. **SEE N&V P.463**

534 **CELL BIOLOGY** An inverse relationship to germline transcription defines centromeric chromatin in *C. elegans*
R Gassmann et al.

538 **MOLECULAR BIOLOGY** The anti-Shine-Dalgarno sequence drives translational pausing and codon choice in bacteria
G-W Li, E Oh & J S Weissman

542 **CELL BIOLOGY** Live-cell delamination counterbalances epithelial growth to limit tissue overcrowding
E Marinari et al.

546 **CELL BIOLOGY** Crowding induces live cell extrusion to maintain homeostatic cell numbers in epithelia
G T Eisenhoffer et al.

550 **CORRIGENDUM** DNA-binding factors shape the mouse methylome at distal regulatory regions
M B Stadler et al.

KIMORE, OKSANIKAY / SHUTTERSTOCK