

# CONTENTS

14 February 2013 / Vol 494 / Issue No 7436

## THIS WEEK

### EDITORIALS

#### 147 FUNDING

##### A deal on the horizon

Scientists cannot afford to be complacent as Europe settles on its research budget

#### 147 HEALTH

##### Preventive therapy

The path to clinical trials for stem-cell treatments needs to be smoothed

#### 148 NATURAL DISASTERS

##### Damage control

New York faces tough decisions after Superstorm Sandy

### WORLD VIEW

#### 149 Redefine misconduct as distorted reporting

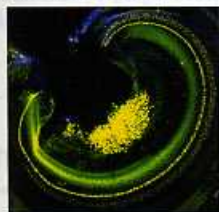
Daniele Fanelli

It's not just what is written up but what is omitted that is important

### RESEARCH HIGHLIGHTS

#### 150 SELECTIONS FROM THE SCIENTIFIC LITERATURE

Immunity gets easier / Nanodiamond lasers / Inner-ear repair / Bats a viral



reservoir / A yes to Flores 'hobbit' as species / A new antibiotic / Torsion measured

### SEVEN DAYS

#### 152 THE NEWS IN BRIEF

Life found in subglacial lake / Germany's science minister resigns / Suresh quits NSF / Poaching more than halves Gabon's forest elephant population / Solomon Islands hit by tsunami

## CAREERS

#### 271 SCIENCE COMMUNICATION

##### From page to screen

Science writers in the online world need to spread their net wide

#### 273 CAREER BRIEFS

## NEWS IN FOCUS

#### 155 EPIDEMIOLOGY

US flu outbreak puts Google in a spin



#### 156 - GENETICS

Researchers network to help identify rare genetic conditions

#### 158 POLICY

US science agencies brace themselves for sweeping cuts

#### 159 FUNDING

Europe's budget scales back plans for science programme

#### 160 GLOBAL HEALTH

Synthetic biology promises rapid route to malaria drug

#### 161 PUBLISHING

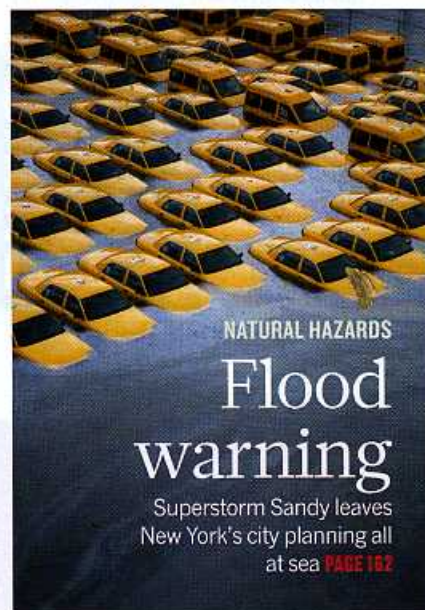
Company puts a price on peer review in bid to ease publication process

### FEATURES

#### 166 BIOTECHNOLOGY

##### Cowboy culture

A Texas firm's approach to stem-cell therapy is causing a stir



NATURAL HAZARDS

## Flood warning

Superstorm Sandy leaves New York's city planning all at sea **PAGE 162**

## COMMENT

#### 169 POLLUTION

##### Classify plastic waste as hazardous

Chelsea M Rochman, Mark Anthony Browne et al.

Urgent action is needed to stem the damaging tide of debris

### BOOKS & ARTS



#### ECO-ENGINEERING

## Material gains

Chris Wise, Michael Pawlyn and Michael Braungart have designs on nature **PAGE 172**

#### 175 THEATRE

##### The needle in Newton's eye

Alla Katsnelson

### CORRESPONDENCE

176 Act now to tackle resistant TB / More to research than papers / Teilhard for short, not de Chardin

### FUTURES

#### 276 Peace

Danny Dunlavy





# CONTENTS

14 February 2013 / Vol 494 / Issue No 7436

## RESEARCH

### NEW ONLINE

177 Papers published this week at nature.com

### NEWS & VIEWS

#### 178 NEUROSCIENCE

##### To go or not to go

The neural circuitry that decides what to do as well as what not to do

D James Surmeier [SEE LETTER P.238](#)

#### 179 ASYMMETRIC SYNTHESIS

##### Relay catalysis at a boron centre

Enantioselective allyl addition to activated imines and carbonyls

Valer Jeso & Glenn C Micalizio

[SEE LETTER P.216](#)

#### 181 CELL BIOLOGY

##### Beneficial lessons from viruses

Discovery of a pro-autophagy peptide of possible therapeutic value

Adolfo García-Sastre

[SEE ARTICLE P.201](#)

#### 182 EARTH SCIENCE

##### All rise for the case of the missing magma

The cause of uplift of the Marion Rise

John MacLennan [SEE ARTICLE P.195](#)

### REVIEW

#### 185 NEUROSCIENCE Molecular signatures

##### of G-protein-coupled receptors

A J Venkatakrisnan et al.

### ARTICLES

#### 195 TECTONICS Thin crust as evidence

##### for depleted mantle supporting the Marion Rise

H Zhou & H J B Dick [SEE N&V P.182](#)

#### 201 CELL BIOLOGY Identification

##### of a candidate therapeutic

### EVOLUTION

## Back issue

Surprising variety in the design of vertebrae of early tetrapods. [PAGE 226](#)



### ON THE COVER

## Strike two

A model of the planet-scale collision that formed the giant Rheasilvia crater at the south pole of asteroid 4 Vesta. NASA's Dawn mission to the asteroid revealed unexpected surface features, now explained by a numerical modelling study. [PAGE 207](#)

### autophagy-inducing peptide

S Shoji-Kawata et al. [SEE N&V P.181](#)

### LETTERS

#### 207 ASTRONOMY The structure of the

##### asteroid 4 Vesta as revealed by models of planet-scale collisions

M Jutzi, E Asphaug, P Gillet, J-A Barrat & W Benz

#### 211 QUANTUM PHYSICS Hybrid circuit

##### cavity quantum electrodynamics with a micromechanical resonator

J-M Pirkkalainen et al.

#### 216 CHEMISTRY Simple organic molecules

##### as catalysts for enantioselective synthesis of amines and alcohols

D L Silverio et al. [SEE N&V P.179](#)

#### 222 CLIMATE SCIENCE Insolation-

##### induced mid-Brunhes transition in Southern Ocean ventilation and deep-ocean temperature

Q Yin

#### 226 EVOLUTION Vertebral architecture

##### in the earliest stem tetrapods

S E Pierce et al.

#### 230 ECOLOGY Biodiversity decreases

##### disease through predictable changes in host community competence

P T J Johnson, D L Preston, J T Hoverman & K L D Richgels

#### 234 GENETICS Finding the sources of missing heritability in a yeast cross

J S Bloom, I M Ehrenreich, W T Loo, T-L V Lite & L Kruglyak

#### 238 NEUROSCIENCE Concurrent activation

##### of striatal direct and indirect pathways during action initiation

G Cui et al. [SEE N&V P.178](#)

#### 243 DEVELOPMENTAL BIOLOGY A direct

##### and melanopsin-dependent fetal light response regulates mouse eye development

S Rao et al.

#### 247 STEM CELLS *In vitro* expansion of

##### single Lgr5<sup>+</sup> liver stem cells induced by Wnt-driven regeneration

M Huch et al.

#### 251 CANCER Modelling vemurafenib

##### resistance in melanoma reveals a strategy to forestall drug resistance

M Das Thakur et al.

#### 256 DISEASE Biguanides suppress hepatic

##### glucagon signalling by decreasing production of cyclic AMP

R A Miller et al.

#### 261 IMMUNOLOGY A T-bet gradient controls

##### the fate and function of CCR6<sup>+</sup>RORγt<sup>+</sup> innate lymphoid cells

C S N Klose et al.

#### 266 BIOTECHNOLOGY A complete

##### mass-spectrometric map of the yeast proteome applied to quantitative trait analysis

P Picotti et al.

### DEVELOPMENT

## First light

In mice, fetal exposure to light is vital for the development of vision. [PAGE 243](#)

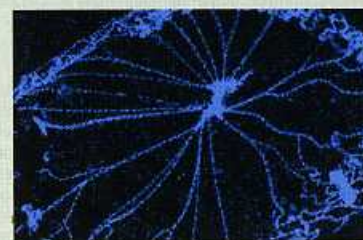


ILLUSTRATION: MARK CARLUCCI