

CONTENTS

9 July 2015 / Vol 523 / Issue No 7559

THIS WEEK

EDITORIALS

127 PUBLIC HEALTH

The HIV epidemic can be stopped

If implemented globally now, prompt treatment should eliminate the threat

127 METRICS

A numbers game

Transparency is the key to making metrics useful indicators of output

128 COMPUTING

Cloud cover

The big-data era is putting pressure on storage methods

WORLD VIEW

129 **We need a measured approach to metrics**

James Wilsdon

Quantitative indicators should not be used in isolation



RESEARCH HIGHLIGHTS

130 SELECTIONS FROM THE SCIENTIFIC LITERATURE

Light dark matter / Dam nuisance for wildlife / Sun raises a storm / Seahorse hangs tough / Spiders for sail

SEVEN DAYS

132 THE NEWS IN BRIEF

New ESA head starts work / California bans personal vaccine exemptions / Pluto probe drops contact

CAREERS

245 COLLABORATIONS

Recipe for a team

Successful collaborations come from trust, not just good science

247 COLUMN

Match that PhD

Deborah J Marsh, Kirsty Foster & Carolyn D Scott

How to choose the right PhD students for a team

NEWS IN FOCUS

135 METEOROLOGY

Nocturnal storm chasers cruise roads in search of heavy weather



136 COMPUTING

Europe makes plans to store data in the cloud

137 BOTANY

Plant denizens get the big-science treatment

138 RESEARCH FRAUD

Prison sentence highlights disparate misconduct penalties

140 SPACE

The plan for New Horizons' visit to Pluto

FEATURES



SEISMOLOGY

The quake hunters

The centre that watches around the clock for killer earthquakes **PAGE 142**

146 PUBLIC HEALTH

How to beat HIV

The drugs and diagnostics are there; now they must be put into action

COMMENT



GENOMICS

Cloud commons

Funders should ensure that large data sets are within easy reach, argue Lincoln D Stein and colleagues **PAGE 149**

152 SUSTAINABILITY

Development goals should enable decision-making

Keith Shepherd et al.

Focus not on target-setting, but on answering specific questions

BOOKS & ARTS

155 PARTICLE PHYSICS

Inside the Rad Lab

Jon Butterworth

156 PHYSICS

The impulse of beauty

Joseph Silk

155 BOOKS IN BRIEF

CORRESPONDENCE

158 Off-target mutations / How to use volunteers / Protect Bolivian forests / China's carbon / Forty years of TNF



FUTURES

250 The ravelled sleeve of care

Anatoly Belilovsky

CONTENTS

9 July 2015 / Vol 523 / Issue No 7559

RESEARCH

NEW ONLINE

159 Papers published this week at nature.com

NEWS & VIEWS

160 BIOGEOCHEMISTRY

Iron's voyage from the abyss

Long-distance transport of iron-rich water from hydrothermal vents

Kazuhiro Misumi **SEE LETTER P.200**

161 CANCER

Diagnosis by extracellular vesicles

Pancreatic disease detected by glypican-1 on circulating vesicles

Clotilde Théry **SEE ARTICLE P.177**

163 BIODIVERSITY

Hidden impacts of logging

Effects of logging on birds vary with harvesting practices and species traits

Joseph A Tobias

164 ASTROPHYSICS

A twist in the tale of γ -ray bursts

An ultra-long γ -ray burst produced by a peculiar supernova

Stephen J Smartt **SEE LETTER P.189**

166 PROTISTOLOGY

How to build a microbial eye

A planktonic eye-like structure composed of mitochondria and plastids

Thomas A Richards & Suely L Gomes

SEE LETTER P.204

167 MYELOID DISEASE

Another action of a thalidomide derivative

Lenalidomide binding to CRBN induces degradation of casein kinase 1 α

Takumi Ito & Hiroshi Handa

SEE ARTICLE P.183

REVIEW

169 ASTROPHYSICS Feedback in low-mass

galaxies in the early Universe

D K Erb

ARTICLES

177 CANCER Glypican-1 identifies cancer exosomes and detects early pancreatic cancer

S A Melo et al. **SEE N&V P.161**

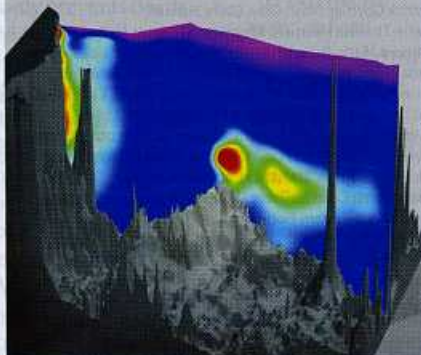
183 CANCER Lenalidomide induces ubiquitination and degradation of CK1 α in del(5q) MDS

J Krönke et al. **SEE N&V P.167**

ON THE COVER

Hot metal

A three-dimensional view of dissolved iron distribution across the South Pacific Ocean. A study of the transport of hydrothermal iron and other trace metals from the southern East Pacific Rise across the South Pacific Ocean suggests an input of global hydrothermal dissolved iron to the ocean at least four times greater than previously reported. **PAGES 160 & 200**



LETTERS

189 ASTROPHYSICS A very luminous magnetar-powered supernova

associated with an ultra-long γ -ray burst

J Greiner et al. **SEE N&V P.164**

193 PLANETARY SCIENCE Global-scale coherence modulation of radiation-belt electron loss from plasmaspheric hiss

A W Breneman et al.

196 PHYSICAL CHEMISTRY Long-range energy transport in single supramolecular nanofibres at room temperature

A T Haedler et al.

200 MARINE CHEMISTRY Basin-scale transport of hydrothermal dissolved metals across the South Pacific Ocean

J A Resing et al. **SEE N&V P.160**

204 MICROBIOLOGY Eye-like ocelloids are built from different endosymbiotically acquired components

G Gavelis et al. **SEE N&V P.166**

208 MICROBIOLOGY Unusual biology across a group comprising more than 15% of domain Bacteria

C T Brown et al.

212 EPIGENOMICS Human body epigenome maps reveal noncanonical DNA methylation variation

M D Schultz et al.

217 INFECTIOUS DISEASES Global circulation patterns of seasonal influenza viruses vary with antigenic drift

T Bedford et al.

221 IMMUNOLOGY TH17 cells transdifferentiate into regulatory T cells during resolution of inflammation

N Gagliani et al.

226 CELL BIOLOGY Hypoxia fate mapping identifies cycling cardiomyocytes in the adult heart

W Kimura et al.

231 CANCER Melanoma-intrinsic β -catenin signalling prevents anti-tumour immunity

S Spranger, R Bao & T F Gajewski

236 MICROBIOLOGY Cyclic di-GMP acts as a cell cycle oscillator to drive chromosome replication

C Lori et al.

240 MOLECULAR BIOLOGY Condensin-driven remodelling of X chromosome topology during dosage compensation

E Crane et al.



MICROBIOLOGY

Eye player

From unlikely beginnings, warnowiid dinoflagellates have evolved a complex eye-like organelle. **PAGE 204**

3D GRAPHICS BY REINER SCHULTZ, ALFRED WEGENER INSTITUTE, HELMHOLTZ CENTRE FOR POLAR AND MARINE RESEARCH, BREMERHAVEN, GERMANY