

## EDITORIAL

- 884 **Nurturing Young Scientists**  
James Gentile and Sherwood Boehlert  
>> *Education Forum* p. 906

## NEWS OF THE WEEK

- 888 **After Outcry, Oil Data Inches Into the Open**
- 888 **The Case of the Missing \$470 Million in BP's Promised Research Fund**
- 890 **From the *Science* Policy Blog**
- 890 **Investigation Leaves Field in the Dark About a Colleague's Work**
- 891 **From *Science's* Online Daily News Site**
- 892 **One-Two Punch Elevates Rats to the Knockout Ranks**
- 893 **Senator Builds His Legacy With University of Alabama Earmarks**
- 894 **U.S. Astronomers Unveil Stripped-Down 'Short List'**

## NEWS FOCUS

- 896 **Free Journals Grow Amid Ongoing Debate**  
>> *Science Podcast*
- 899 **Pavlovsk's Hopes Hang on a Tweet**

## LETTERS

- 900 **Local Programs Take a Bite Out of Malaria**  
C. J. Shiff and P. Thuma
- National Indicators Show Biodiversity Progress**  
H. Xu et al.
- Response**  
S. H. M. Butchart et al.
- Putting Census Data to Work**  
T. D. Brewer
- Life in Science: Up a Creek in Indonesia**  
B. M. Beehler
- 902 **TECHNICAL COMMENT ABSTRACTS**

## BOOKS ET AL.

- 904 **The Plundered Planet**  
P. Collier, reviewed by B. S. Low
- 905 **Close Examination**  
M. E. Wieseman and A. Roy, curators;  
A Closer Look  
M. E. Wieseman, reviewed by P. Fara

## EDUCATION FORUM

- 906 **Partnerships for STEM Education**  
K. M. Foster et al.  
>> *Editorial* p. 884

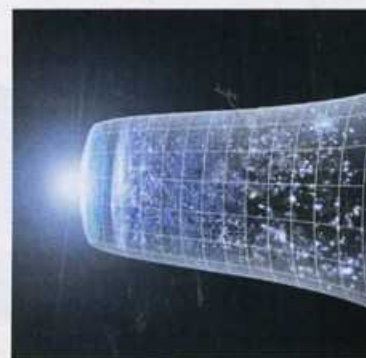
## PERSPECTIVES

- 908 **A Tale of Two Jets**  
N. Yunes  
>> *Report* p. 927
- 909 **Nuclei Get TAN Lines**  
D. A. Starr  
>> *Report* p. 956
- 910 **Directing Light Emission from Quantum Dots**  
H. Giessen and M. Lippitz  
>> *Report* p. 930
- 911 **Replication Error Amplified**  
S. Kaachar et al.  
>> *Report* p. 943
- 913 **A Glutamate Pathway to Faster-Acting Antidepressants?**  
J. F. Cryan and O. F. O'Leary  
>> *Report* p. 959
- 914 **Double TIP-ping**  
H. Singh and I. A. Demarco  
>> *Research Article* p. 917

## BREVIA

- 916 **Land-Level Changes Produced by the  $M_w$  8.8 2010 Chilean Earthquake**  
M. Farias et al.  
The 2010  $M_w$  8.8 Chilean earthquake ruptured ~500 kilometers and vertically displaced over 3 meters.

CONTENTS continued >>



page 894



pages 910 & 930



## COVER

Immuno-electron micrograph of a plastid-dividing ring (diameter ~500 nm), a structure required for chloroplast division, isolated from the unicellular alga *Cyanidioschyzon merolae*. Immunogold particles (black dots) indicate localization of the glycosyltransferase protein PDR1 (protein dividing ring 1), which forms a ring with carbohydrates that constricts to physically divide the chloroplast. See page 949.

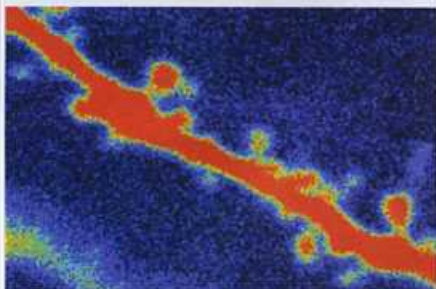
Image: Yamato Yoshida, Haruko Kuroiwa, Tsuneyoshi Kuroiwa/Research Information Center for Extremophile, Rikkyo University, Tokyo, Japan

## DEPARTMENTS

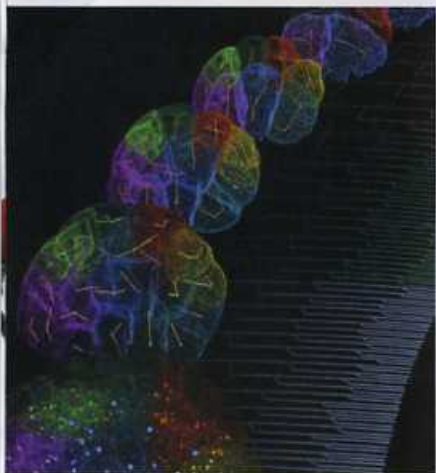
- 882 *This Week in Science*
- 885 *Editors' Choice*
- 886 *Science Staff*
- 887 *Random Samples*
- 972 *New Products*
- 973 *Science Careers*



page 924



pages 913 & 959



page 967

**RESEARCH ARTICLE**

- 917 **PTIP Promotes Chromatin Changes Critical for Immunoglobulin Class Switch Recombination**  
*J. A. Daniel et al.*  
 A factor that regulates chromatin accessibility and recombination during immunoglobulin rearrangements is identified.  
 >> *Perspective p. 914*

**REPORTS**

- 924 **Cosmological Constraints from Strong Gravitational Lensing in Clusters of Galaxies**  
*E. Jullo et al.*  
 Light from distant sources bends around massive intervening objects and helps to reveal the properties of dark energy.
- 927 **Dual Jets from Binary Black Holes**  
*C. Palenzuela et al.*  
 Simulations show that merging black holes may produce a detectable electromagnetic signature.  
 >> *Perspective p. 908*
- 930 **Unidirectional Emission of a Quantum Dot Coupled to a Nanoantenna**  
*A. G. Curto et al.*  
 An antenna designed for optical wavelengths is used to control the direction of the light emitted from a quantum dot.  
 >> *Perspective p. 910*
- 933 **Ceria Maintains Smaller Metal Catalyst Particles by Strong Metal-Support Bonding**  
*J. A. Farmer and C. T. Campbell*  
 The stability of cerium oxide surfaces allows deposited silver nanoparticles to maintain a small size distribution.
- 936 **Evidence of Recent Thrust Faulting on the Moon Revealed by the Lunar Reconnaissance Orbiter Camera**  
*T. R. Watters et al.*  
 The relatively young age of the faults and their distribution suggest global, late-stage contraction of the Moon.
- 940 **Drought-Induced Reduction in Global Terrestrial Net Primary Production from 2000 Through 2009**  
*M. Zhao and S. W. Running*  
 Terrestrial biomass declined during the hot past decade, reversing the trend of the previous 20 years.

- 943 **Loss of DNA Replication Control Is a Potent Inducer of Gene Amplification**  
*B. M. Green et al.*  
 Re-replication of DNA and homologous recombination between repetitive elements can cause genome instability.  
 >> *Perspective p. 911*
- 946 **The *Legionella* Effector Protein DrrA AMPylates the Membrane Traffic Regulator Rab1b**  
*M. P. Müller et al.*  
 An intracellular bacterial pathogen interferes with host cell membrane trafficking.
- 949 **Chloroplasts Divide by Contraction of a Bundle of Nanofilaments Consisting of Polyglucan**  
*Y. Yoshida et al.*  
 Enzymatic transfer of simple sugars is essential for the formation of the chloroplast-division machinery.
- 953 **Conserved Fungal LysM Effector Ecp6 Prevents Chitin-Triggered Immunity in Plants**  
*R. de Jonge et al.*  
 A fungal protein binds to a host cell wall component to allow the fungus to escape immune responses.
- 956 **Linear Arrays of Nuclear Envelope Proteins Harness Retrograde Actin Flow for Nuclear Movement**  
*G. W. G. Luxton et al.*  
 An actin-dependent mechanism is involved in moving nuclei so that they are properly positioned for cell migration.  
 >> *Perspective p. 909*
- 959 **mTOR-Dependent Synapse Formation Underlies the Rapid Antidepressant Effects of NMDA Antagonists**  
*N. Li et al.*  
 Ketamine, an anaesthetic and recreational drug, rapidly increases synaptic signaling and antidepressant behavioral responses.  
 >> *Perspective p. 913; Science Podcast*
- 964 **Females Use Multiple Mating and Genetically Loaded Sperm Competition to Target Compatible Genes**  
*S. R. Pryke et al.*  
 Female birds that have multiple mates favor fertilization by the most genetically compatible father.
- 967 **Cell Lineage Reconstruction of Early Zebrafish Embryos Using Label-Free Nonlinear Microscopy**  
*N. Olivier et al.*  
 Time-lapse recording characterizes the rhythm and cleavage pattern of the embryo during early stages of development.