

EDITORIAL

- 627 Investing in Distant Rewards
William H. Press

NEWS OF THE WEEK

- 632 A roundup of the week's top stories

NEWS & ANALYSIS

- 635 Chu's Legacy at DOE: Some Fields Gain, Others Falter
636 BP Research Dollars Yield Signs of Cautious Hope
638 Forecasting Regional Climate Change Flunks Its First Test
639 Supreme Court to Review the Scope of Monsanto's Seed Patents

NEWS FOCUS

- 640 Giant Marine Reserves Pose Vast Challenges
642 Archaeologist Hammers Away at 'Modern' Behavior
644 Losing Arable Land, China Faces Stark Choice: Adapt or Go Hungry
>>> *Science Podcast*

LETTERS

- 646 Physical Laws Shape Biology
K. Selvarajoo and M. Tomita
Biodiversity Despite Selective Logging
D. P. Edwards and W. F. Laurance
Legal Limits to Data Re-Identification
S. Wilson
647 NextGenVOICES
647 TECHNICAL COMMENT ABSTRACTS

BOOKS ET AL.

- 648 The Annotated and Illustrated Double Helix
J. D. Watson, A. Gann and J. Witkowski, Eds., reviewed by N. Comfort
649 A Cultural History of Heredity
S. Müller-Wille and H.-J. Rheinberger, reviewed by H. Landecker

POLICY FORUM

- 650 Is Europe Evolving Toward an Integrated Research Area?
A. Chessa et al.

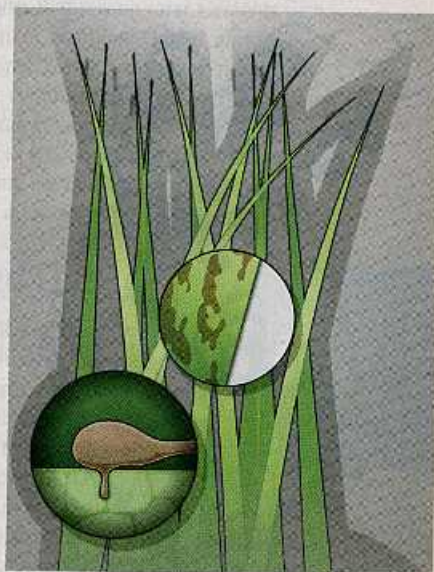
PERSPECTIVES

- 652 Shielding Broken DNA for a Quick Fix
J. Lukas and C. Lukas
>>> *Reports pp. 700 and 711*
653 Pollution, Politics, and Vultures
A. Balmford
>>> *Science Podcast*
654 Metamaterials with Quantum Gain
O. Hess and K. L. Tsakmakidis
655 Impact and Extinction
H. Pälke
>>> *Report p. 684*
656 Fossils Versus Clocks
A. D. Yoder
>>> *Research Article p. 662*
658 Copying Biology's Ways with Hydrogen
F. A. Armstrong
>>> *Report p. 682*
659 Jack of All Trades, Master of Flowering
J. Å. H. Danielson and W. B. Frommer
>>> *Report p. 704*
661 Retrospective: Carl R. Woese (1928–2012)
N. Goldenfeld and N. R. Pace

CONTENTS continued >>>



page 640



pages 659 & 704

Explore our rich online offerings, including multimedia, news, *Science Careers*, and our two research journals—*Science Signaling* and *Science Translational Medicine*—at www.sciencemag.org



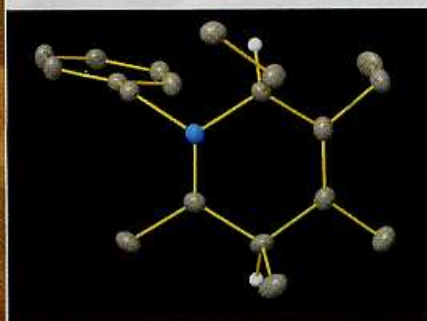
COVER

Rendering from the Gravity Recovery and Interior Laboratory (GRAIL) mission showing free-air gravity anomalies of the Moon's farside. Here, red corresponds to mass excesses and blue to mass deficits. This map resolves spatial scales as fine as 13 kilometers and reveals impact basins, complex craters, and simple craters. For more results from the GRAIL mission, see the Reports on pages 668, 671, and 675.

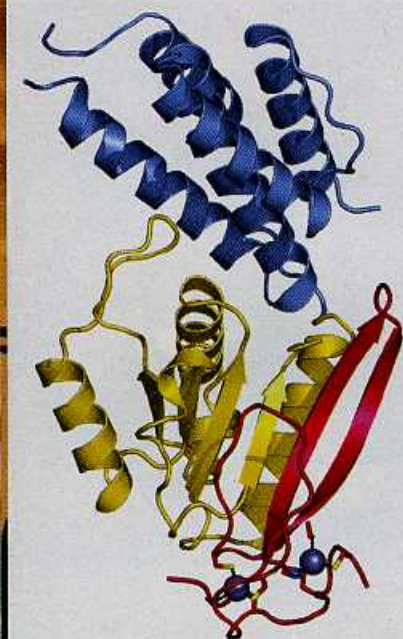
Image: NASA/Massachusetts Institute of Technology/Jet Propulsion Laboratory/Goddard Space Flight Center/Scientific Visualization Studio

DEPARTMENTS

- 625 This Week in *Science*
628 Editors' Choice
630 *Science* Staff
716 Information for Authors
718 New Products
719 *Science Careers*



page 678



page 690

RESEARCH ARTICLE

- 662 **The Placental Mammal Ancestor and the Post-K-Pg Radiation of Placentals**
M. A. O'Leary et al.
Fossil and DNA phylogenies suggest that placental mammals diversified in the Cenozoic and reconstruct the ancestral form.
>> *Perspective p. 656*

REPORTS

- 668 **Gravity Field of the Moon from the Gravity Recovery and Interior Laboratory (GRAIL) Mission**
M. T. Zuber et al.
The Moon's gravity field reveals that impacts have homogenized the density of the crust and fractured it extensively.
- 671 **The Crust of the Moon as Seen by GRAIL**
M. A. Wieczorek et al.
The Moon's gravity field shows that the lunar crust is less dense and more porous than was thought.
- 675 **Ancient Igneous Intrusions and Early Expansion of the Moon Revealed by GRAIL Gravity Gradiometry**
J. C. Andrews-Hanna et al.
The Moon's gravity map shows that the crust is cut by extensive magmatic dikes, perhaps implying a period of early expansion.
- 678 **Proton Donor Acidity Controls Selectivity in Nonaromatic Nitrogen Heterocycle Synthesis**
S. Duttwyler et al.
Acids of different strengths propel a common intermediate to a diverse array of compounds sought in pharmaceutical research.
- 682 **A Functional [NiFe]Hydrogenase Mimic That Catalyzes Electron and Hydride Transfer from H₂**
S. Ogo et al.
A bimetallic complex mimics a widely studied enzyme class of particular interest in renewable energy research.
>> *Perspective p. 658*
- 684 **Time Scales of Critical Events Around the Cretaceous-Paleogene Boundary**
P. R. Renne et al.
Radiometric dating establishes the mass extinction that killed the dinosaurs as synchronous with a large asteroid impact.
>> *Perspective p. 655*

- 687 **Stress State in the Largest Displacement Area of the 2011 Tohoku-Oki Earthquake**
W. Lin et al.
Borehole stress measurements indicate a nearly total stress drop in the region of largest slip.
- 690 **Paramyxovirus V Proteins Disrupt the Fold of the RNA Sensor MDA5 to Inhibit Antiviral Signaling**
C. Motz et al.
The crystal structure of a viral protein core complex reveals how paramyxoviruses inhibit the innate immune response.
- 694 **Structural Basis for Hijacking of Cellular LxxLL Motifs by Papillomavirus E6 Oncoproteins**
K. Zanier et al.
Crystal structures show how a key oncoprotein in human papillomavirus binds host proteins.
- 698 **A Histone Mutant Reproduces the Phenotype Caused by Loss of Histone-Modifying Factor Polycomb**
A. R. Pengelly et al.
Histone genetics provides functional evidence for the importance of histone modifications in gene regulation.
- 700 **53BP1 Regulates DSB Repair Using Rif1 to Control 5' End Resection**
M. Zimmermann et al.
In mammalian cells, Rap1-interacting factor 1 protects DNA ends against resection.
>> *Perspective p. 652; Report p. 711*
- 704 **Regulation of Flowering by Trehalose-6-Phosphate Signaling in *Arabidopsis thaliana***
V. Wahl et al.
Specific sugar signals integrate carbohydrate status with day length and developmental age to regulate flowering.
>> *Perspective p. 659*
- 708 **Host-Derived Nitrate Boosts Growth of *E. coli* in the Inflamed Gut**
S. E. Winter et al.
During inflammation, *Escherichia coli* uses nitrate respiration to gain a growth advantage over other gut bacteria.
- 711 **Rif1 Prevents Resection of DNA Breaks and Promotes Immunoglobulin Class Switching**
M. Di Virgilio et al.
In mammalian cells, Rap1-interacting factor 1 protects DNA ends against resection.
>> *Perspective p. 652; Report p. 700*

SCIENCE (ISSN 0036-8075) is published weekly on Friday, except the last week in December, by the American Association for the Advancement of Science, 1200 New York Avenue, NW, Washington, DC 20005. Periodicals Mail postage (publication No. 484466) paid at Washington, DC, and additional mailing offices. Copyright © 2013 by the American Association for the Advancement of Science. The title SCIENCE is a registered trademark of the AAAS. Domestic individual membership and subscription (51 issues): \$149 (\$74 allocated to subscription). Domestic institutional subscription (51 issues): \$990; Foreign postage extra: Mexico, Caribbean (surface mail) \$55; other countries (air assist delivery) \$85. First class, airmail, student, and emeritus rates on request. Canadian rates with GST available upon request, GST #R1254 88122. Publications Mail Agreement Number 1069624. Printed in the U.S.A.

Change of address: Allow 4 weeks, giving old and new addresses and 8-digit account number. Postmaster: Send change of address to AAAS, P.O. Box 96178, Washington, DC 20090-6178. Single-copy sales: \$10.00 current issue, \$15.00 back issue prepaid includes surface postage; bulk rates on request. Authorization to photocopy material for internal or personal use under circumstances not falling within the fair use provisions of the Copyright Act is granted by AAAS to libraries and other users registered with the Copyright Clearance Center (CCC) Transactional Reporting Service, provided that \$30.00 per article is paid directly to CCC, 222 Rosewood Drive, Danvers, MA 01923. The identification code for Science is 0036-8075. Science is indexed in the Reader's Guide to Periodical Literature and in several specialized indexes.