

SPECIAL SECTION

Black Holes

INTRODUCTION

535 Inescapable Pull

PERSPECTIVES

536 Classical Black Holes: The Nonlinear Dynamics of Curved Spacetime
K. S. Thorne

538 Quantum Mechanics of Black Holes
E. Witten
>> Science Podcast

REVIEWS

540 Stellar-Mass Black Holes and Ultraluminous X-ray Sources
R. Fender and T. Belloni

544 The Formation and Evolution of Massive Black Holes
M. Volonteri

>> Report p. 554; Science Express Report by R. C. Reis et al.; Science Podcast; and video at http://scim.ag/black_holes



page 514

EDITORIAL

503 NIH Basics
Francis S. Collins

NEWS OF THE WEEK

506 A roundup of the week's top stories

NEWS & ANALYSIS

- 509 Dreams Meet Realities at AIDS Conferences
- 510 Multicellularity Driven by Bacteria
- 511 NASA's Spacefaring Science Chief Sets a New Course for Mars
- 512 Ice Age Tools Hint at 40,000 Years of Bushman Culture
- 513 London's Olympic Drug Testing Lab to Become National Phenome Center

NEWS FOCUS

- 514 The Polio Emergency
- 517 Fighting Polio in Pakistan
Closing a Deadly Refuge
>> Science Podcast

LETTERS

- 522 Chinese Addiction Study and Human Rights
J. J. Amon
Response
P. Wu et al.
- Battling Bias at NIH
J. L. Sherley

524 CORRECTIONS AND CLARIFICATIONS

BOOKS ET AL.

- 525 The Righteous Mind
J. Haidt, reviewed by J. T. Jost
- 526 Race, Monogamy, and Other Lies They Told You
A. Fuentes, reviewed by A. Jenkins

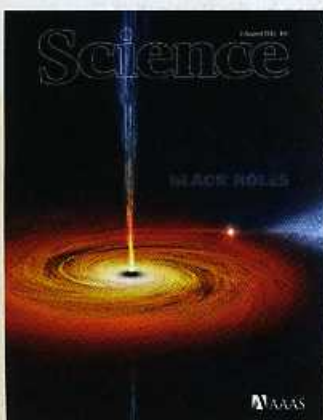
POLICY FORUM

527 Aligning Regulations and Ethics in Human Research
R. Dresser

PERSPECTIVES

- 529 Outsourcing Genome Protection
J. Xiol and R. S. Pillai
>> Report p. 574
- 530 Approaching Asymmetry and Versatility in Polymer Assembly
D. J. Pochan
>> Report p. 559
- 531 Modular Biological Complexity
C. Koch
- 532 How Did the Cuckoo Get Its Polymorphic Plumage?
J. Mappes and L. Lindström
>> Report p. 578
- 534 Retrospective: F. Herbert Bormann (1922–2012)
L. O. Hedin

CONTENTS continued >>



COVER

Illustration of the black hole in Cygnus X-1, a binary star system 6000 light-years away. A disk of stellar material feeds this black hole, which is 15 times as massive as the Sun but less than 60 kilometers across. As it falls toward the black hole, some of the material gets expelled in two opposite jets. A section highlighting recent research on black holes begins on page 535. For the story behind the cover, go to <http://scim.ag/cov6094>.

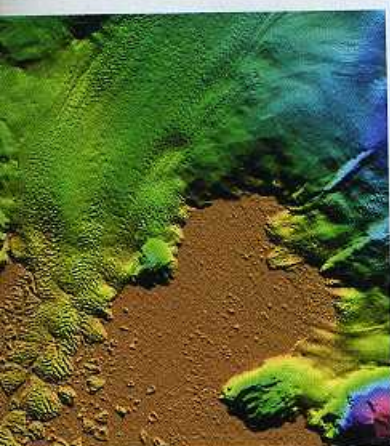
Image: NASA/Chandra X-ray Center/M. Weiss

DEPARTMENTS

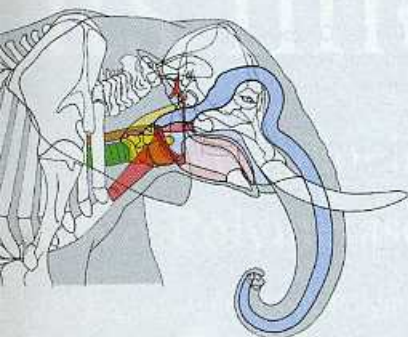
- 502 This Week in Science
- 504 Editors' Choice
- 505 Science Staff
- 603 New Products
- 604 Science Careers



page 525



page 569



page 595

REVIEW

- 549 Transformation Optics and Subwavelength Control of Light
J. B. Pendry et al.

BREVIA

- 553 Cartwheel Architecture of *Trichonympha* Basal Body
P. Guichard et al.
Electron microscopy provides a close-up view of the ninefold symmetric stacked rings at the base of cilia and flagella.

REPORTS

- 554 Radio Detections During Two State Transitions of the Intermediate-Mass Black Hole HLX-1
N. Webb et al.
Observations of a candidate intermediate-mass black hole support the scale invariance of jets in black holes.
- 556 Kepler-36: A Pair of Planets with Neighboring Orbits and Dissimilar Densities
J. A. Carter et al.
The Kepler spacecraft detected a super-Earth and a Neptune-like planet in very tightly spaced orbits around the same star.
- 559 Non-Centrosymmetric Cylindrical Micelles by Unidirectional Growth
P. A. Rupar et al.
A capping approach is used to create asymmetrical block copolymer micelles through self-assembly.
>> Perspective p. 530
- 563 A Reversible and Higher-Rate Li-O₂ Battery
Z. Peng et al.
A viable lithium-oxygen battery is demonstrated using dimethyl sulfoxide electrolyte and a porous gold cathode.
- 566 Aerosols from Overseas Rival Domestic Emissions over North America
H. Yu et al.
Roughly half of all particulate matter found in the air above North America originates from sources overseas.
- 569 Aerial Photographs Reveal Late-20th-Century Dynamic Ice Loss in Northwestern Greenland
K. H. Kjær et al.
Archived photographs extending back to the mid-1980s help show the role of dynamic thinning in ice mass loss from Greenland.
- 574 Function, Targets, and Evolution of *Caenorhabditis elegans* piRNAs
M. P. Bagijn et al.
Piwi-bound piRNAs recruit endogenous small interfering RNAs to silence mobile genetic elements.
>> Perspective p. 529
- 578 Cuckoos Combat Socially Transmitted Defenses of Reed Warbler Hosts with a Plumage Polymorphism
R. Thorogood and N. B. Davies
Parasitic cuckoos sporting new colors flourish after their warbler hosts learn to defend against the mainstream fashion.
>> Perspective p. 532
- 580 Unraveling the Life History of Successful Invaders
D. Sol et al.
Allocating resources to long-lived adults is one means by which birds succeed in new niches.
- 584 Quantitative Modulation of Polycomb Silencing Underlies Natural Variation in Vernalization
V. Coustham et al.
Arabidopsis adjusts the onset of flowering to the length of winters via an epigenetic mechanism.
- 587 Mitochondrial Import Efficiency of ATFS-1 Regulates Mitochondrial UPR Activation
A. M. Nargund et al.
When stressed, the mitochondrion reduces import of a transcription factor, which enters the nucleus instead.
- 591 Opening and Closing of the Bacterial RNA Polymerase Clamp
A. Chakraborty et al.
Single-molecule fluorescence measurements define the clamp conformation during transcription initiation and elongation.
- 595 How Low Can You Go? Physical Production Mechanism of Elephant Infrasonic Vocalizations
C. T. Herbst et al.
Elephants produce low-frequency sounds via intrinsic vocal-fold vibrations similar to those in humans.
>> Science Podcast
- 599 Feedback Regulation of Transcriptional Termination by the Mammalian Circadian Clock PERIOD Complex
K. Padmanabhan et al.
A circadian rhythm regulator acts by altering the elongation stage of gene expression.