

## EDITORIAL

- 1009 Combating Hunger  
M. S. Swaminathan

## NEWS OF THE WEEK

- 1014 A roundup of the week's top stories

## NEWS & ANALYSIS

- 1016 Genetic Influences on Disease Remain Hidden
- 1017 DOE Shifts Money From Research Grants to New Projects
- 1018 As Open Access Explodes, How to Tell the Good From the Bad and the Ugly?
- 1019 Genome Study Helps Contain MRSA Outbreak—And Breeds New Questions

## NEWS FOCUS

- 1020 In Search of the Wild Chicken From Farmyard to the Lab  
>> *Science Podcast*
- 1025 Making Sense of a Senseless Act Korea Tackles a Mushrooming Problem

## LETTERS

- 1028 Barry Commoner's Place in History  
M. Egan
- Climate Change-Induced Salinity Threatens Health  
P. Vineis and A. Khan
- Journals: Increase Revisions, Not Rejections  
E. K. Bowers  
>> *Report p. 1065*

- 1029 CORRECTIONS AND CLARIFICATIONS

## BOOKS ET AL.

- 1030 Spillover  
D. Quammen, reviewed by D. G. Streicker and A. B. Pedersen

## POLICY FORUM

- 1031 The Contribution of Private Industry to Agricultural Innovation  
K. Fuglie et al.

## PERSPECTIVES

- 1033 A Golden Era of Nobel Laureates  
J. L. Goldstein and M. S. Brown
- 1034 Carbon Storage with Benefits  
S. P. Sohi
- 1035 Can One Cell Influence Cancer Heterogeneity?  
A. V. Krivtsov and S. A. Armstrong  
>> *Report p. 1080*
- 1037 Imaging the Deep Earth  
G. A. Prieto  
>> *Report p. 1063*
- 1038 Plant Gametes Do Fertilization with a Twist  
W. J. Snell  
>> *Report p. 1093*
- 1039 Algae Under Pressure and in Hot Water  
P. E. Savage
- 1040 The Origin of the Moon  
A. N. Halliday  
>> *Research Article p. 1047; Report p. 1052*

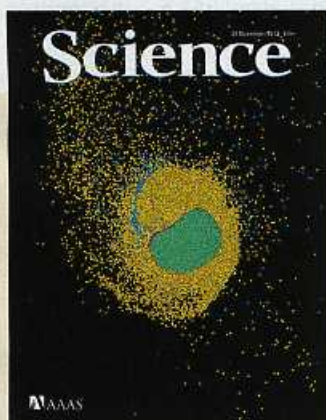
CONTENTS continued >>



page 1020



page 1030



## COVER

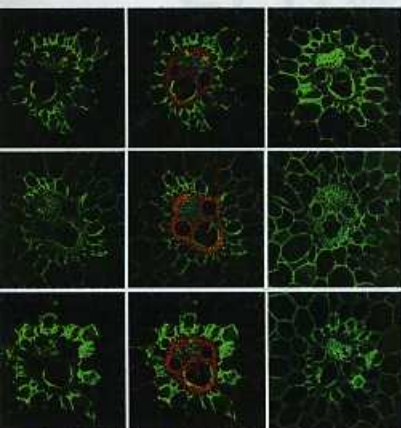
The lower hemisphere of a fast-spinning Earth shown 2 hours after a giant impact. Colors denote the silicate mantles and iron cores of Earth and the impactor. The debris evolves into a Moon-forming disk composed primarily of material from Earth's mantle, explaining the isotopic similarity between Earth and the Moon. In this model, the fast-spinning Earth is slowed by an orbital resonance between the Moon and the Sun. See pages 1040, 1047, and 1052.

Image: Sarah T. Stewart

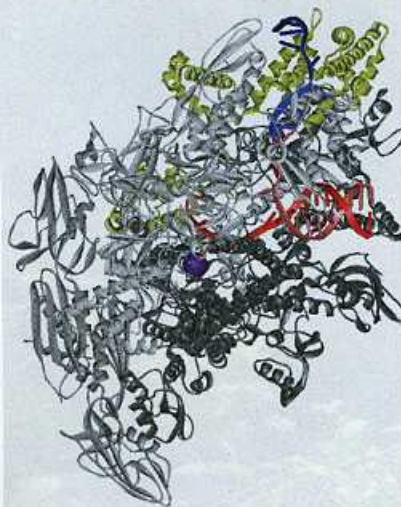
## DEPARTMENTS

- 1006 This Week in *Science*
- 1010 Editors' Choice
- 1012 *Science* Staff
- 1101 New Products
- 1102 *Science* Careers





page 1055



page 1076

## REVIEW

- 1042 **The Protein-Folding Problem, 50 Years On**  
*K. A. Dill and J. L. MacCallum*  
 >> *Science Podcast*

## RESEARCH ARTICLE

- 1047 **Making the Moon from a Fast-Spinning Earth: A Giant Impact Followed by Resonant Despinning**  
*M. Cuk and S. T. Stewart*  
 Computer simulations show that a giant impact on early Earth could lead to a Moon with a composition similar to Earth's.  
 >> *Perspective p. 1040; Report p. 1052*

## REPORTS

- 1052 **Forming a Moon with an Earth-like Composition via a Giant Impact**  
*R. M. Canup*  
 Computer simulations show that a giant impact on early Earth could lead to a Moon with a composition similar to Earth's.  
 >> *Perspective p. 1040; Research Article p. 1047*
- 1055 **How Does Plant Cell Wall Nanoscale Architecture Correlate with Enzymatic Digestibility?**  
*S.-Y. Ding et al.*  
 Microscopy techniques uncover the distinct mechanisms of different enzyme classes in breaking down cellulose for biofuels.
- 1060 **Quantum-State Resolved Bimolecular Collisions of Velocity-Controlled OH with NO Radicals**  
*M. Kirste et al.*  
 Precise experiments on bimolecular collisions show that simplifications rendering theory tractable confer reasonable accuracy.
- 1063 **Body-Wave Imaging of Earth's Mantle Discontinuities from Ambient Seismic Noise**  
*P. Poli et al.*  
 Correlated seismic waves reveal that the mantle boundary at 410 kilometers is three times the thickness of the deeper one at 660 kilometers.  
 >> *Perspective p. 1037; Science Podcast*
- 1065 **Flows of Research Manuscripts Among Scientific Journals Reveal Hidden Submission Patterns**  
*V. Calcagno et al.*  
 A large-scale study of biological manuscript submission history reveals how authors strategically submit their research.  
 >> *Letter by E. K. Bowers p. 1028*

- 1069 **SAICAR Stimulates Pyruvate Kinase Isoform M2 and Promotes Cancer Cell Survival in Glucose-Limited Conditions**  
*K. E. Keller et al.*  
 A metabolite is identified that may help cancer cells coordinate their mode of energy generation with nutrient conditions.
- 1072 **The *Legionella* Effector RavZ Inhibits Host Autophagy Through Irreversible Atg8 Deconjugation**  
*A. Choy et al.*  
 An intracellular pathogen disrupts autophagy by targeting an essential host protein on the early autophagosome.
- 1076 **Structural Basis of Transcription Initiation**  
*Y. Zhang et al.*  
 The bacterial transcription initiation complex preorganizes promoter DNA for nucleotide binding and RNA synthesis.
- 1080 **Dedifferentiation of Neurons and Astrocytes by Oncogenes Can Induce Gliomas in Mice**  
*D. Friedmann-Morvinski et al.*  
 Murine brain tumors do not necessarily originate from neural stem cells but can arise from mature neurons and astrocytes.  
 >> *Perspective p. 1035*
- 1085 **A Global Pattern of Thermal Adaptation in Marine Phytoplankton**  
*M. K. Thomas et al.*  
 Optimal growth rates for phytoplankton correlate with local temperature and predict movement toward the poles with warming.
- 1088 **Decoding Human Cytomegalovirus**  
*N. Stern-Ginossar et al.*  
 A closer look at the human cytomegalovirus genome uncovers many new open reading frames.
- 1093 **Egg Cell-Secreted EC1 Triggers Sperm Cell Activation During Double Fertilization**  
*S. Sprunck et al.*  
 The cysteine-rich proteins of *Arabidopsis* egg and central cells enable fusion with just one sperm each.  
 >> *Perspective p. 1038*
- 1097 **Content-Specific Fronto-Parietal Synchronization During Visual Working Memory**  
*R. F. Salazar et al.*  
 Short-term memories are represented by large-scale patterns of synchronous activity across the fronto-parietal network.