

EDITORIAL

- 13 The Internet and Academic Freedom
Michael H. Posner

NEWS OF THE WEEK

- 18 A roundup of the week's top stories

NEWS & ANALYSIS

- 21 Fraud-Detection Tool Could Shake Up Psychology
- 22 Researchers Hail New Restoration Program Funds
- 23 Prominent Turkish Academic Who Advocated Secular Reforms Arrested
- 25 Supreme Court Cites Science in Limiting Punishments for Juveniles

NEWS FOCUS

- 26 Turning Over a New Leaf in China's Forests
- 28 LOL and a Touch of Science, Too
- 30 Investigating the Ills of Long-Dead Celebrities
>> Science Podcast

LETTERS

- 32 NextGenVOICES
- 34 TECHNICAL COMMENT ABSTRACTS

BOOKS ET AL.

- 35 Why Nations Fall
D. Acemoglu and J. A. Robinson, reviewed by G. Garrett
- 36 Histories of Scientific Observation
L. Daston and E. Lunbeck, Eds., reviewed by C. Nappi

POLICY FORUM

- 37 Paying Patients for Their Tissue: The Legacy of Henrietta Lacks
R. D. Truog et al.

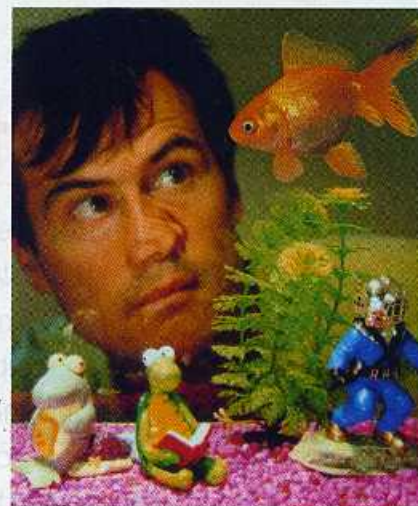
PERSPECTIVES

- 39 Human Genetic Variation, Shared and Private
F. Casals and J. Bertranpetit
>> Research Article p. 64; Report p. 100
- 40 Two Atoms Announce Their Long-Distance Relationship
J. Volz and A. Rauschenbeutel
>> Report p. 72
- 41 A Mitochondrial Mystery, Solved
A. S. Divakaruni and A. N. Murphy
>> Reports pp. 93 and 96
- 43 Brown-Dwarf Origins
S. Basu
>> Report p. 69
- 44 A Lipid Linchpin for Wnt-Fz Docking
M. Bienz and X. He
>> Research Article p. 59
- 46 The Seasonal Smorgasbord of the Seas
A. Martin
>> Research Article p. 54
- 47 Haploinsufficient Gene Selection in Cancer
C. D. Greenman
>> Report p. 104

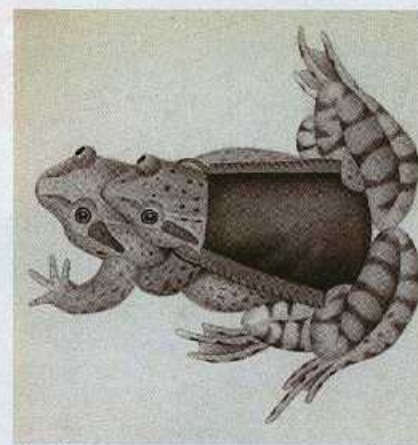
REVIEW

- 49 Network Interventions
T. W. Valente

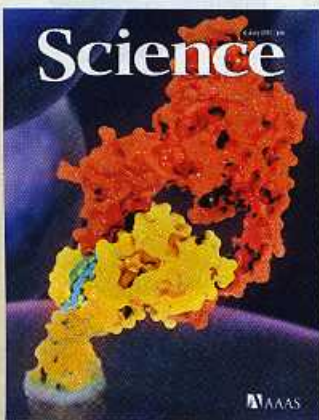
CONTENTS continued >>



page 28



page 36



COVER

Structure of the Wnt signaling molecule (red) in complex with the Frizzled ligand-binding domain (yellow), schematically depicted as connected to the cell surface. A key feature of this structure is the visualization of a lipid group (blue) on Wnt directly engaging Frizzled. The Wnt/Frizzled mode of binding paves the way for the design of Wnt-based therapeutics. See page 59.

Image produced by Eric Smith and Chris Garcia

DEPARTMENTS

- 10 This Week in *Science*
- 14 Editors' Choice
- 16 *Science* Staff
- 115 New Products
- 116 *Science* Careers

RESEARCH ARTICLES

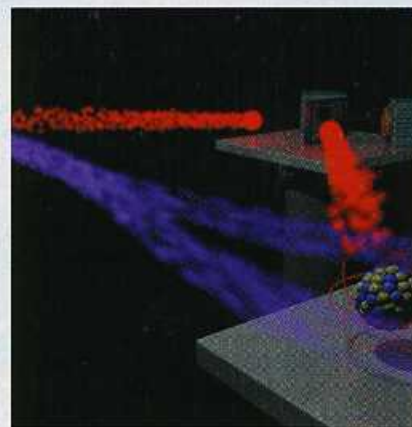
- 54 **Eddy-Driven Stratification Initiates North Atlantic Spring Phytoplankton Blooms**
A. Mahadevan et al.
Oceans eddies can trigger springtime plankton blooms previously attributed to surface heating.
>> *Perspective p. 46*
- 59 **Structural Basis of Wnt Recognition by Frizzled**
C. Y. Janda et al.
The structure of the morphogen Wnt bound to its receptor provides a basis for understanding Wnt's functional pleiotropy.
>> *Perspective p. 44*
- 64 **Evolution and Functional Impact of Rare Coding Variation from Deep Sequencing of Human Exomes**
J. A. Tennessen et al.
Most functionally consequential variants in protein-coding genes are rare and, thus, difficult to find.
>> *Perspective p. 39; Report p. 100*

REPORTS

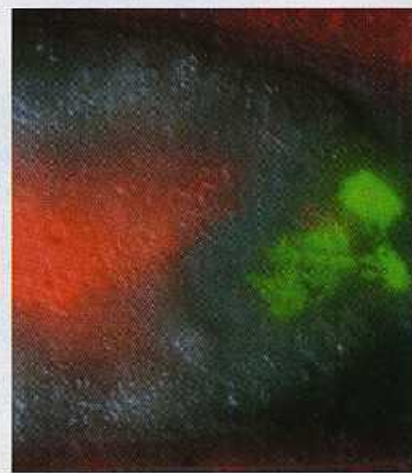
- 69 **Interferometric Identification of a Pre-Brown Dwarf**
P. André et al.
Observations by millimeter-wave interferometry reveal a substellar object not massive enough to sustain hydrogen fusion.
>> *Perspective p. 43*
- 72 **Heralded Entanglement Between Widely Separated Atoms**
J. Hofmann et al.
Heralded entanglement between single atoms 20 meters apart is a promising step toward long-distance quantum communication.
>> *Perspective p. 40; Science Podcast*
- 75 **Cavity Cooling Below the Recoil Limit**
M. Wolke et al.
Rubidium atoms are heated and cooled by single-photon absorption and emission in a narrow-bandwidth optical cavity.
- 78 **Large Volcanic Aerosol Load in the Stratosphere Linked to Asian Monsoon Transport**
A. E. Bourassa et al.
Even moderate volcanic eruptions can inject sulfur dioxide into the stratosphere with the help of the Asian monsoon.

- 81 **ENSO Drove 2500-Year Collapse of Eastern Pacific Coral Reefs**
L. T. Toth et al.
A 6000-year record captures the influence of the El Niño–Southern Oscillation on coral reefs off the coast of Panama.
>> *Science Podcast*
- 85 **The Dynamics of Cooperative Bacterial Virulence in the Field**
B. Raymond et al.
Toxin-producing individuals enable *Bacillus thuringiensis* to invade its host; once inside, nonproducing cheaters take over.
- 88 **A Single Promoter Inversion Switches *Photorhabdus* Between Pathogenic and Mutualistic States**
V. S. Somvanshi et al.
A stochastic switch allows a bacterium to toggle between virulent and symbiotic forms in its hosts.
- 93 **Identification and Functional Expression of the Mitochondrial Pyruvate Carrier**
S. Herzig et al.
Two components of the mitochondrial pyruvate transporter confer transport activity when expressed in bacteria.
- 96 **A Mitochondrial Pyruvate Carrier Required for Pyruvate Uptake in Yeast, *Drosophila*, and Humans**
D. K. Bricker et al.
The genes encoding two components of the pyruvate transporter in mitochondria have been identified.
>> *Perspective p. 41*
- 100 **An Abundance of Rare Functional Variants in 202 Drug Target Genes Sequenced in 14,002 People**
M. R. Nelson et al.
A pharmacogenomics analysis shows how challenging it will be to associate rare variants with phenotypes.
>> *Perspective p. 39; Research Article p. 64*
- 104 **Recurrent Hemizygous Deletions in Cancers May Optimize Proliferative Potential**
N. L. Solimini et al.
The genomes of cancer cells have preferentially lost genes that inhibit cell growth.
>> *Perspective p. 47*
- 109 **A Distinct Role of the Temporal-Parietal Junction in Predicting Socially Guided Decisions**
R. McKell Carter et al.
A single region of the brain is particularly engaged when one is beating an opponent at poker.

CONTENTS continued >>



pages 40 & 72



pages 85 & 88