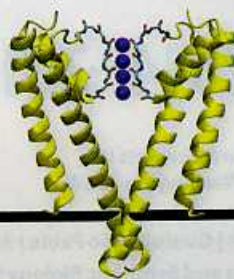


CONTENTS



303 & 352

What pushes potassium through the channel?

17 OCTOBER 2014 • VOLUME 346 • ISSUE 6207

NEWS

IN BRIEF

284 Roundup of the week's news

IN DEPTH

287 FOR VENEZUELAN ACADEMICS, SPEAKING OUT IS RISKY BUSINESS

Government attacks some, snares many in red tape *By L. Wade*



288

288 'NONADHERENCE': A BITTER PILL FOR DRUG TRIALS

Drug developers seek new ways to ensure that subjects take their medicine *By K. Servick*

289 EBOLA VACCINE TRIALS RAISE ETHICAL ISSUES

Randomized studies may offer fastest answer *By J. Cohen and K. Kupferschmidt*

290 LIGHT LOOPHOLE WINS LAURELS

Chemistry Nobel winners pushed microscopes past supposed limit *By D. Clerly*

291 REGULATING INDUSTRY'S BIG BOYS

French economist Jean Tirole wins Nobel for his analyses of oligopolies *By T. Rabesandratana*

FEATURE

292 BABOON WATCH

An epic baboon study shows how social interactions shape health and reproduction in all primates—including humans *By E. Pennisi*

INSIGHTS

PERSPECTIVES

296 CHANGES ON THE HORIZON FOR CONSUMER GENOMICS IN THE EU

Test results may no longer be available directly to consumers *By L. Kalokairinou et al.*

298 TO LEARN IS TO MYELINATE

The adult mammalian brain requires the production of new glial cells and myelin for learning *By P. Long and G. Corfas*

► RESEARCH ARTICLE P. 318

300 NUTRIENT COMPUTATION FOR ROOT ARCHITECTURE

Plants sense and respond to nutrients using a peptide signaling system *By T. Bisseling and B. Scheres*

► REPORT P. 343

301 SENSING BIODIVERSITY

Sophisticated networks are required to make the best use of biodiversity data from satellites and in situ sensors *By W. Turner*

303 POTASSIUM IONS LINE UP

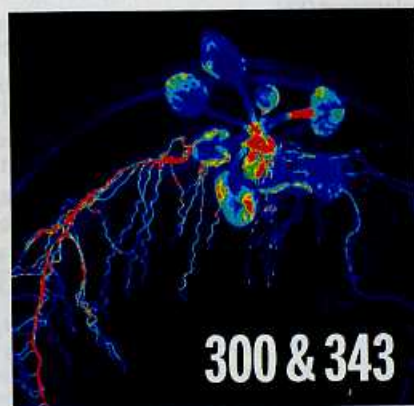
Do K⁺ ions move in single file through potassium channels? *By G. Hummer*

► REPORT P. 352

304 IN OPTICAL PUMPING, LESS CAN BE MORE

Creating loss in one optical resonator can initiate lasing in its coupled partner *By H. G. L. Schwefel*

► REPORT P. 328



300 & 343

390



305 LOOKING CLOSER AT THE SUN

The space-based IRIS telescope provides a new window to view the solar atmosphere *By L. K. Harra*

► EYEING THE SUN SECTION P. 315

BOOKS ET AL.

307 WHAT IS YOUR RACE?

By K. Prewitt, reviewed by P. Schor

LETTERS

308 BEFORE THE KARDASHIAN INDEX

By G. R. Goldsmith

308 NUANCED NEGATIVE RESULT REPORTING

By S. K. Lhachimi et al.

308 SUPPORT UNDERWAY FOR COASTAL ECOSYSTEMS

By D. S. Schinn

309 SCIENCE AND RELIGION: THINK LOCAL

By J. M. Hanes

DEPARTMENTS

283 EDITORIAL

"Epiconers" of resilience *By Mary Lou Zoback*

390 WORKING LIFE

Life inspires applications *By Sharon Ann Holgate*

Science Staff	282
New Products	369
Science Careers	370

RESEARCH

IN BRIEF

310 From *Science* and other journals

REVIEWS

313 APPLIED EVOLUTION

Applying evolutionary biology to address global challenges *S. P. Carroll et al.*

REVIEW SUMMARY; FOR FULL TEXT:

dx.doi.org/10.1126/science.1245993

SPECIAL SECTION

Eyeing the Sun

INTRODUCTION

315 Probing the solar interface region *B. De Pontieu et al.*

REPORT ABSTRACTS

316 On the prevalence of small-scale twist in the solar chromosphere and transition region *B. De Pontieu et al.*

Prevalence of small-scale jets from the networks of the solar transition region and chromosphere *H. Tian et al.*

Evidence of nonthermal particles in coronal loops heated impulsively by nanoflares *P. Testa et al.*

Hot explosions in the cool atmosphere of the Sun *H. Peter et al.*

The unresolved fine structure resolved: IRIS observations of the solar transition region *V. Hansteen et al.*

SEE ALSO

► PERSPECTIVE P. 305

► VIDEO

► sciencemag.org/special/iris

314 SOCIAL EVOLUTION

Evolution of responses to (un)fairness

S. F. Brosnan and F. B. M. de Waal

REVIEW SUMMARY; FOR FULL TEXT:

dx.doi.org/10.1126/science.1251776

RESEARCH ARTICLE

318 SKILL DEVELOPMENT

Motor skill learning requires active central myelination

I. A. McKenzie et al.

► PERSPECTIVE P. 298

REPORTS

322 PLANETARY GEOLOGY

Constraints on Mimas' interior from Cassini ISS libration measurements

R. Tajeddine et al.

325 LAB ASTROPHYSICS

Laboratory formation of a scaled protostellar jet by coaligned poloidal magnetic field *B. Albertazzi et al.*

328 OPTICS

Loss-induced suppression and revival of lasing *B. Peng et al.*

► PERSPECTIVE P. 304

332 QUANTUM ELECTRONICS

Cavity quantum electrodynamics with many-body states of a two-dimensional electron gas *S. Smolka et al.*

336 ATTOSECOND DYNAMICS

Ultrafast electron dynamics in phenylalanine initiated by attosecond pulses *F. Calegari et al.*

340 STRATEGIC REASONING

Neural correlates of strategic reasoning during competitive games *H. Seo et al.*

343 NITROGEN UPTAKE

Perception of root-derived peptides by shoot LRR-RKs mediates systemic N-demand signaling *R. Tabata et al.*

► PERSPECTIVE P. 300

346 TROPHIC CASCADES

Large carnivores make savanna tree communities less thorny

A. T. Ford et al.

► PODCAST

349 CLIMATE CHANGE

Increased variability of tornado occurrence in the United States *H. E. Brooks et al.*

352 ION CHANNELS

Ion permeation in K^+ channels occurs by direct Coulomb knock-on *D. A. Köpfer et al.*

► PERSPECTIVE P. 303

355 ION CHANNELS

Structure and selectivity in bestrophin ion channels *T. Yang et al.*

360 AGING

HSF-1-mediated cytoskeletal integrity determines thermotolerance and life span *N. A. Baird et al.*

363 AUTOIMMUNITY

Detection of T cell responses to a ubiquitous cellular protein in autoimmune disease *Y. Ito et al.*

ON THE COVER



Ultraviolet view of a coronal mass ejection on the Sun on 9 May 2014. Images from the Interface Region Imaging Spectrograph (IRIS) (inset) and from the Solar Dynamics Observatory's

Atmospheric Imaging Assembly (background) show the violent eruption of hot plasma into space. NASA launched IRIS in June 2013 to study the complex interface between the Sun's surface and outer atmosphere. See pages 305 and 315 and sciencemag.org/special/iris.

Images: IRIS and SDO/ALMA, Lockheed Martin Solar & Astrophysics Laboratory, NASA/Goddard Space Flight Center

SCIENCE (ISSN 0036-8075) is published weekly on Friday, except the last week in December, by the American Association for the Advancement of Science, 1200 New York Avenue, NW, Washington, DC 20005. Periodicals mail postage (publication No. 484460) paid at Washington, DC, and additional mailing offices. Copyright © 2014 by the American Association for the Advancement of Science. The title SCIENCE is a registered trademark of the AAAS. Domestic individual membership and subscription (51 issues): \$153 (\$74 allocated to subscription). Domestic institutional subscription (51 issues): \$1282; Foreign postage extra: Mexico, Caribbean (surface mail) \$55; other countries (air assist delivery) \$85. First class, airmail, student, and emeritus rates on request. Canadian rates with GST available upon request, GST #1254 88122. Publications Mail Agreement Number 1069624. Printed in the U.S.A. Change of address: Allow 4 weeks, giving old and new addresses and 8-digit account number. Postmaster: Send change of address to AAAS, P.O. Box 96178, Washington, DC 20090-6178. Single-copy sales: \$10.00 current issue, \$15.00 back issue prepaid includes surface postage; bulk rates on request. Authorization to photocopy material for internal or personal use under circumstances not falling within the fair use provisions of the Copyright Act is granted by AAAS to libraries and other users registered with the Copyright Clearance Center (CCC) Transactional Reporting Service, provided that \$30.00 per article is paid directly to CCC, 222 Rosewood Drive, Danvers, MA 01923. The identification code for Science is 0036-8075. Science is indexed in the Reader's Guide to Periodical Literature and in several specialized indexes.