

EDITORIAL

1127 **Growing Latin American Science**
Celia R. S. Garcia et al.

NEWS OF THE WEEK

1132 **A roundup of the week's top stories**

NEWS & ANALYSIS

- 1135 **Tough Financial Times Bring ESA Down to Earth**
- 1136 **News Flash: X-ray Laser Produces First Protein Structure**
>> *Science Express Report by L. Redecke et al.*
- 1137 **BP Criminal Case Generates Record Payout for Science and Restoration**
- 1138 **Experts Agree Global Warming Is Melting the World Rapidly**
>> *Research Article p. 1183*
- 1139 **An Oil Gusher in the Offing, but Will It Be Enough?**

NEWS FOCUS

- 1140 **Raising Up a Fallen Ivory Tower**
>> *Science Podcast*
- 1143 **Salt and the Sea Serpent**
- 1144 **Crusader Crisis: How Conquest Transformed Northern Europe**
- 1146 **Amid Europe's Food Fights, EFSA Keeps Its Eyes on the Evidence**

LETTERS

- 1149 **The K Computer: User-Friendly**
K. Hirao
- The Final End of the Final Frontier?**
C. M. Lisse and R. L. McNutt Jr.
- Animal Welfare Development in China**
X. Meng et al.

1151 **CORRECTIONS AND CLARIFICATIONS**

BOOKS ET AL.

1152 **Hawking Incorporated**
H. Miallet, reviewed by J. Agar

POLICY FORUM

1153 **From Acid Rain to Climate Change**
S. Reis et al.

PERSPECTIVES

- 1155 **iPSC Disease Modeling**
F. Soldner and R. Jaenisch
- 1156 **Building the Human Brain**
C. K. Machens
>> *Report p. 1202*
- 1157 **Integrating the Captive and the Wild**
K. H. Redford et al.
- 1159 **LEGO-like DNA Structures**
K. V. Gothelf
>> *Research Article p. 1177*
- 1160 **Embers of the Distant Past**
V. Bromm
>> *Report p. 1190*
- 1161 **Outsmarting Outbreaks**
M. J. Walker and S. A. Beatson
- 1163 **Retrospective: E. Donnall Thomas (1920–2012)**
F. R. Appelbaum

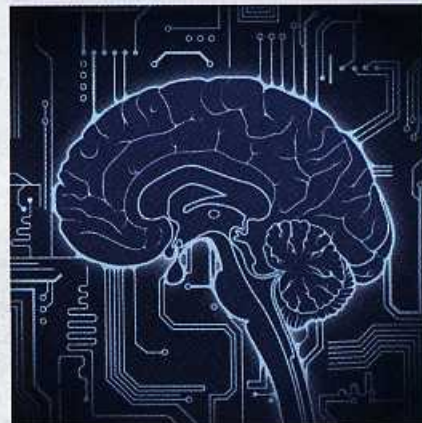
SCIENCE PRIZE ESSAY

1164 **Solving Complex Problems**
K. V. Hodges

CONTENTS continued >>



page 1144



pages 1156 & 1202



COVER

Computer-generated models of three-dimensional nanostructures that were self-assembled from synthetic DNA strands called DNA bricks. A master collection defines a 1000-voxel "molecular canvas" with a 25-nanometer edge. By selecting subsets of bricks, Ke *et al.* constructed a panel of 102 distinct shapes with sophisticated surface features and intricate interior cavities and tunnels. These nanostructures may find applications ranging from biomedicine to nanoelectronics. See page 1177.

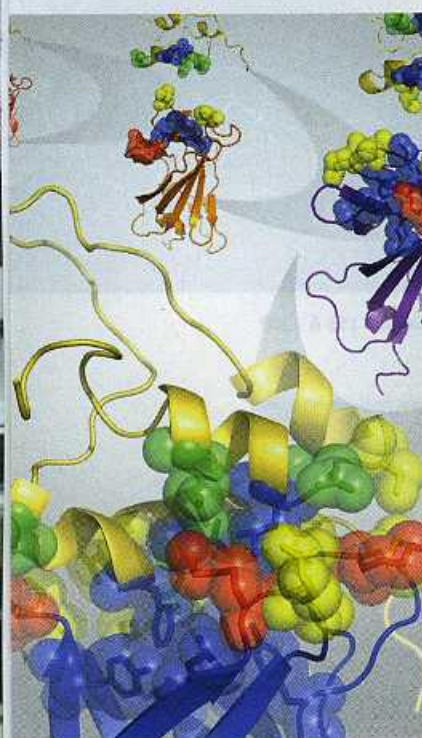
Image: Yonggang Ke

DEPARTMENTS

- 1124 *This Week in Science*
- 1128 *Editors' Choice*
- 1130 *Science Staff*
- 1166 *AAAS News & Notes*
- 1233 *New Products*
- 1234 *Science Careers*



pages 1160 & 1190



page 1209

REVIEW

- 1172 **Ice-Sheet Response to Oceanic Forcing**
I. Joughin et al.

RESEARCH ARTICLES

- 1177 **Three-Dimensional Structures Self-Assembled from DNA Bricks**
Y. Ke et al.
Stepwise assembly of 32-nucleotide DNA "bricks" can create a wide variety of nanoscale objects.
>> *Perspective p. 1159*
- 1183 **A Reconciled Estimate of Ice-Sheet Mass Balance**
A. Shepherd et al.
The mass balance of the polar ice sheets is estimated by combining the results of existing independent techniques.
>> *News story p. 1138*

REPORTS

- 1190 **The Imprint of the Extragalactic Background Light in the Gamma-Ray Spectra of Blazars**
M. Ackermann et al.
Gamma-ray spectra obtained with the Fermi Space Telescope constrain star formation and galaxy evolution over cosmic time.
>> *Perspective p. 1160*
- 1193 **Superconducting Dome in a Gate-Tuned Band Insulator**
J. T. Ye et al.
Liquid gating tunes the carrier density in molybdenum disulfide, revealing unconventional superconductivity.
- 1196 **Formation of Regular Satellites from Ancient Massive Rings in the Solar System**
A. Crida and S. Charnoz
An analytical model suggests that the terrestrial and giant planets in the solar system formed moons through a similar process.
- 1199 **Chemically and Geographically Distinct Solid-Phase Iron Pools in the Southern Ocean**
B. P. von der Heyden et al.
The distribution and composition of fine-grained marine iron particles vary strongly with location.

- 1202 **A Large-Scale Model of the Functioning Brain**
C. Eliasmith et al.
Two-and-a-half million model neurons recognize images, learn via reinforcement, and display fluid intelligence.
>> *Perspective p. 1156*
- 1206 **Copy Number Variation of Multiple Genes at *Rhg1* Mediates Nematode Resistance in Soybean**
D. E. Cook et al.
Resistance to a damaging disease of soybean is conferred by a cluster of linked genes present in multiple copies.
- 1209 **An Exon Splice Enhancer Primes IGF2:IGF2R Binding Site Structure and Function Evolution**
C. Williams et al.
Parental genetic conflict may have exploited changes in the coding of a protein loop in a growth factor receptor.
- 1214 **Cytoplasmic ATP Hydrolysis Powers Transport of Lipopolysaccharide Across the Periplasm in *E. coli***
S. Okuda et al.
Transporting lipopolysaccharide from inside the bacterial cell to the surface requires multiple molecules of adenosine triphosphate.
- 1217 **Direct Observation of Stalled Fork Restart via Fork Regression in the T4 Replication System**
M. Manosas et al.
Bacterial DNA replication machinery is able to stall, regress, and then migrate past a DNA lesion in vitro.
- 1220 **Progenitor and Terminal Subsets of CD8⁺ T Cells Cooperate to Contain Chronic Viral Infection**
M. A. Paley et al.
Chronic viral infections like HIV are kept in check by two functionally distinct types of T lymphocyte.
- 1225 **Body Cues, Not Facial Expressions, Discriminate Between Intense Positive and Negative Emotions**
H. Aviezer et al.
The body reveals what the face conceals.
- 1229 **A Mutation in EGF Repeat-8 of Notch Discriminates Between Serrate/Jagged and Delta Family Ligands**
S. Yamamoto et al.
A genetic screen identifies an extracellular motif in a conserved signaling receptor that confers ligand specificity.