

SPECIAL SECTION

Galaxy Evolution

INTRODUCTION

169 A Universe of Galaxies

NEWS

- 170 Milky Way Researchers' Home Away From Home
- 173 Galaxy Zoo Volunteers Share Pain and Glory of Research

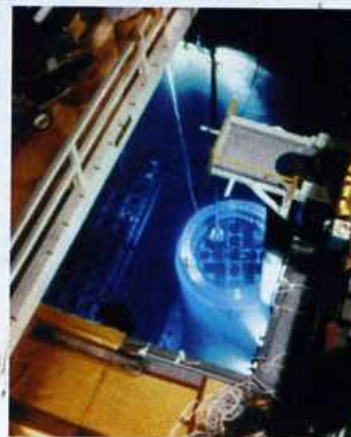
PERSPECTIVE

176 Galactic Paleontology
E. Tolstoy

REVIEWS

- 178 The Cosmic History of Star Formation
J. S. Dunlop
- 182 The Coevolution of Galaxies and Supermassive Black Holes: A Local Perspective
T. M. Heckman and G. Kauffmann

>> *Policy Forum* p. 161



page 148

EDITORIAL

136 A Threat to Medical Innovation
Michael Rosbash

NEWS OF THE WEEK

140 A roundup of the week's top stories

NEWS & ANALYSIS

- 143 Once on 'Fast Track,' Avastin Now Derailed
- 144 Foreign Researchers Begin to Make Their Mark
- 145 Unseen World of Clinical Trials Emerges From U.S. Database
- 146 Cash Advance, New Approach Aim to Relaunch Biosphere 2
- 147 DARPA Offers \$30 Million to Jump-Start Cellular Factories

NEWS FOCUS

- 148 NUCLEAR WASTE
Waste Panel Expected to Back Interim Storage
>> *Science Podcast*
- 150 Light at the End of the Radwaste Disposal Tunnel Could Be Real
- 153 Picking Up the Pieces at Ravaged Tohoku University
Facilities Plot Research Revival

LETTERS

- 156 Seeds of Change for Restoration Ecology
R. Aerts and O. Honnay
Manufacturing Decline Yields Drug Shortages
P. Connelly and B. P. Quinn
NSF's Struggle to Articulate Relevance
R. Frodeman and J. B. Holbrook
- 158 CORRECTIONS AND CLARIFICATIONS

BOOKS ET AL.

- 159 Science as Psychology
L. M. Osbeck et al.
reviewed by R. N. Giere
- 160 Loving and Hating Mathematics
R. Hersh and V. John-Steiner
reviewed by L. A. Steen

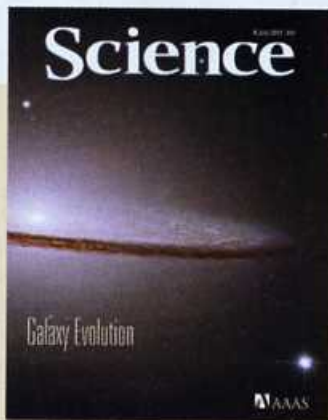
POLICY FORUM

- 161 A Dark Age for Space Astronomy?
R.-M. Bonnet and J. A. M. Bleeker
>> *Galaxy Evolution section* p. 169

PERSPECTIVES

- 163 Lipases in Cachexia
P. Arner
>> *Report* p. 233
- 164 Precision, Not Power
E. E. Eyler
>> *Report* p. 196
- 165 A Critical Point for Turbulence
B. Eckhardt
>> *Research Article* p. 192
- 166 Sex, Death, and the Red Queen
M. A. Brockhurst
>> *Report* p. 216

CONTENTS continued >>



COVER

Composite image of the Sombrero galaxy captured by the Hubble Space Telescope in 2003. Like the Milky Way, the Sombrero is a spiral galaxy with a central stellar bulge and a thin disk containing spiral arms of newly formed stars. The special section beginning on page 169 examines the ways in which galaxies change over time.

Image: NASA and The Hubble Heritage Team (Space Telescope Science Institute/Association of Universities for Research in Astronomy)

DEPARTMENTS

- 133 This Week in *Science*
- 137 Editors' Choice
- 139 *Science* Staff
- 243 New Products
- 244 *Science* Careers

BREVIA

- 186 **Adult Neural Function Requires MeCP2**
C. M. McGraw et al.
 An epigenetic program regulated by MeCP2 needs to be maintained throughout life for normal neurological function.

RESEARCH ARTICLES

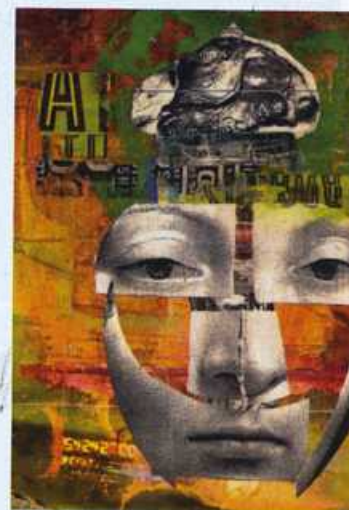
- 187 **Glycolytic Oscillations and Limits on Robust Efficiency**
F. A. Chandra et al.
 Glycolytic oscillations in yeast are a by-product of a trade-off between robustness and efficiency.
- 192 **The Onset of Turbulence in Pipe Flow**
K. Avila et al.
 The lifetimes of injected jet puffs are used to determine the critical point at which turbulent pipe flow is sustained.
 >> *Perspective p. 165*

REPORTS

- 196 **Frequency Metrology in Quantum Degenerate Helium: Direct Measurement of the $2\ ^3S_1 \rightarrow 2\ ^1S_0$ Transition**
R. van Rooij et al.
 Measurement of an extremely weak spectroscopic transition in helium hones fundamental atomic theories.
 >> *Perspective p. 164*
- 199 **An Extremely Luminous Panchromatic Outburst from the Nucleus of a Distant Galaxy**
A. J. Levan et al.
- 203 **A Possible Relativistic Jetted Outburst from a Massive Black Hole Fed by a Tidally Disrupted Star**
J. S. Bloom et al.
 A recent bright emission observed by the Swift satellite is due to the sudden accretion of a star onto a massive black hole.
- 206 **Observation of Transient Structural-Transformation Dynamics in a Cu_2S Nanorod**
H. Zheng et al.
 Structural fluctuations between two equilibrium phases are observed in copper sulfide nanoparticles.
- 209 **Palladium-Catalyzed Aerobic Dehydrogenation of Substituted Cyclohexanones to Phenols**
Y. Izawa et al.
 Phenol derivatives are prepared from nonaromatic ring compounds that can bear a wide variety of substituents.

- 213 **High Pre-Eruptive Water Contents Preserved in Lunar Melt Inclusions**
E. H. Hauri et al.
 Primitive magmatic melt inclusions from the Moon contain as much water as some terrestrial mid-ocean ridge magmas.
- 216 **Running with the Red Queen: Host-Parasite Coevolution Selects for Biparental Sex**
L. T. Morran et al.
 Outcrossing provides better survival than self-fertilization during coevolution between a host and its parasite.
 >> *Perspective p. 166*
- 218 **Isolation of Single Human Hematopoietic Stem Cells Capable of Long-Term Multilineage Engraftment**
F. Notta et al.
 Proteins are identified that underlie the early commitment steps of human hematopoietic stem cell differentiation.
- 222 **Coupled, Circumferential Motions of the Cell Wall Synthesis Machinery and MreB Filaments in *B. subtilis***
E. C. Garner et al.
- 225 **Processive Movement of MreB-Associated Cell Wall Biosynthetic Complexes in Bacteria**
J. Dominguez-Escobar et al.
 Bacteria elongation involves moving synthetic complexes around the cell wall
- 228 **Phosphorylation of the Autophagy Receptor Optineurin Restricts *Salmonella* Growth**
P. Wild et al.
 Phosphorylation of an autophagy receptor restricts pathogenic cytosolic bacterial growth.
- 233 **Adipose Triglyceride Lipase Contributes to Cancer-Associated Cachexia**
S. K. Das et al.
 Ablation of a gene controlling fat breakdown can protect mice from cancer-associated uncontrolled loss of fat and muscle.
 >> *Perspective p. 163*
- 238 **A Pericyte Origin of Spinal Cord Scar Tissue**
C. Göritz et al.
 Scars formed in response to damage to the central nervous system show unexpected complexity.
 >> *Science Podcast*

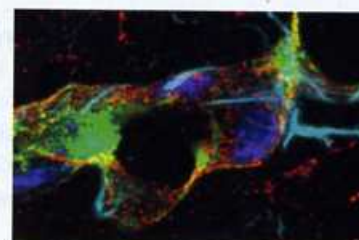
CONTENTS continued >>



page 159



pages 164 & 196



page 238