

SPECIAL SECTION

## Innate Immunity

### INTRODUCTION

283 Recognizing the First Responders

### PERSPECTIVE

284 RIGorous Detection: Exposing Virus Through RNA Sensing  
*J. Rehwinkel and C. Reis e Sousa*

### REVIEWS

286 How the Noninflammasome NLRs Function in the Innate Immune System  
*J. P. Y. Ting et al.*

291 Regulation of Adaptive Immunity by the Innate Immune System  
*A. Iwasaki and R. Medzhitov*

296 The NLRP3 Inflammasome: A Sensor for Metabolic Danger?  
*K. Schroder et al.*

>> Editorial p. 249 and related content at [www.sciencemag.org/special/immunity/](http://www.sciencemag.org/special/immunity/)



pages 260 & 343

### EDITORIAL

249 New Approaches in Immunotherapy  
*Paul G. Thomas and Peter C. Doherty*  
>> *Innate Immunity* section p. 283

### NEWS OF THE WEEK

- 254 An Indefatigable Debate Over Chronic Fatigue Syndrome
- 255 Neandertal Jewelry Shows Their Symbolic Smarts
- 256 NIST Grants Help Schools Build for Tomorrow's Research
- 257 Catalyst Offers New Hope for Capturing CO<sub>2</sub> on the Cheap  
>> Report p. 313
- 257 From *Science's* Online Daily News Site
- 258 Oldest Galaxies Show Stars Came Together in a Hurry
- 258 Inventory Asks: Where Is the Non-Dark Matter Hiding?
- 259 White House Mulls Plan to Broaden Access to Research Papers
- 259 From the *Science* Policy Blog

### NEWS FOCUS

- 260 The Little Wasp That Could  
>> Report p. 343; Science Podcast
- 263 Fishing for Gold in the Last Frontier State  
The Secret Lives of Ocean Fish
- 266 Questions Abound in Q-Fever Explosion in the Netherlands  
Humans, Animals—It's One Health. Or Is It?

### LETTERS

- 268 The Potential of Nutritional Therapy  
*A. Gardner et al.*  
Emissions Omissions  
*T. J. Wallington et al.*  
Response  
*S. C. Jackson*

### 269 CORRECTIONS AND CLARIFICATIONS

### BOOKS ET AL.

- 270 The Passage to Cosmos  
*L. D. Walls, reviewed by N. A. Rupke*
- 271 Nature's Ghosts  
*M. V. Barrow Jr., reviewed by J. Farmer*
- 271 Browsings

### POLICY FORUM

273 Reforming Off-Label Promotion to Enhance Orphan Disease Treatment  
*B. A. Liang and T. Mackey*

### PERSPECTIVES

- 275 CO<sub>2</sub>mmon Sense  
*W. B. Frommer*
- 276 Explaining Bird Migration  
*O. Gilg and N. G. Yoccoz*  
>> Report p. 326
- 278 Green Gold Catalysis  
*C. H. Christensen and J. K. Nørskov*  
>> Report p. 319
- 279 The Botanical Solution for Malaria  
*W. K. Milhous and P. J. Weina*  
>> Report p. 328
- 280 Ion Chemistry Mediated by Water Networks  
*K. R. Sieferrmann and B. Abel*  
>> Report p. 308
- 282 Retrospective:  
Paul A. Samuelson (1915–2009)  
*R. M. Solow*

CONTENTS continued >>



### COVER

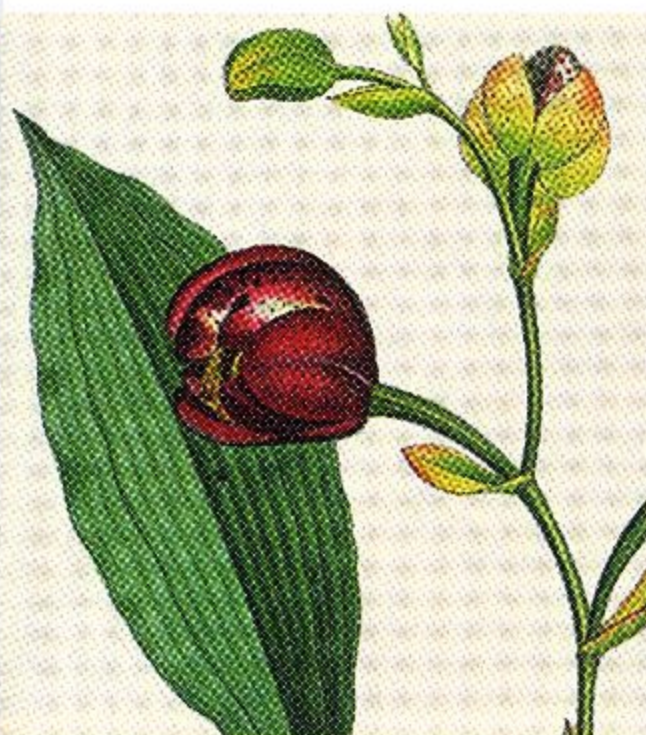
Dendritic cells of the immune system recognize and bind bacteria and other microbes by means of receptors expressed on the dendritic cell membrane and within the cell, thus triggering an immune response. Microbial sensing is associated with the innate arm of the immune system, and recent developments in this area are described in the special section starting on page 283.

Image: *Chris Bickel*

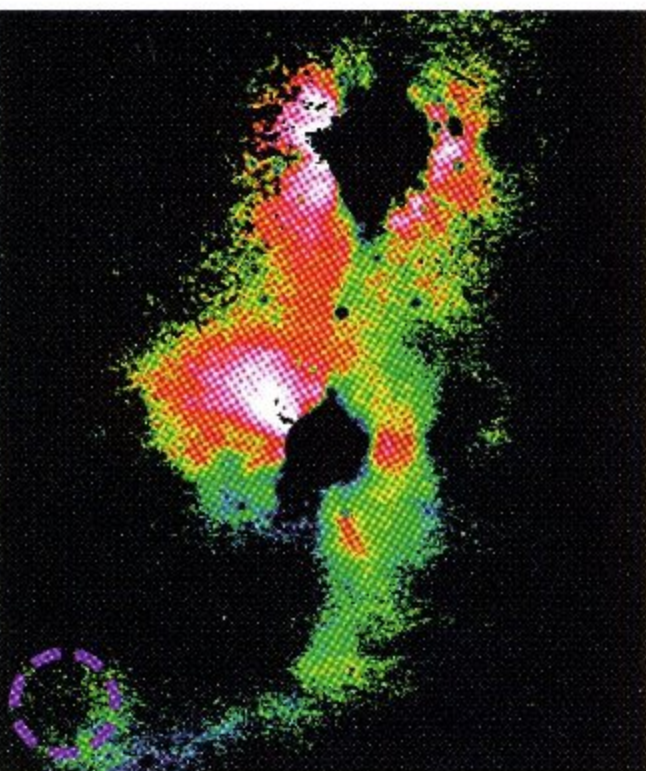
### DEPARTMENTS

- 247 This Week in *Science*
- 251 Editors' Choice
- 252 *Science* Staff
- 253 Random Samples
- 352 Information for Authors
- 354 New Products
- 355 *Science* Careers

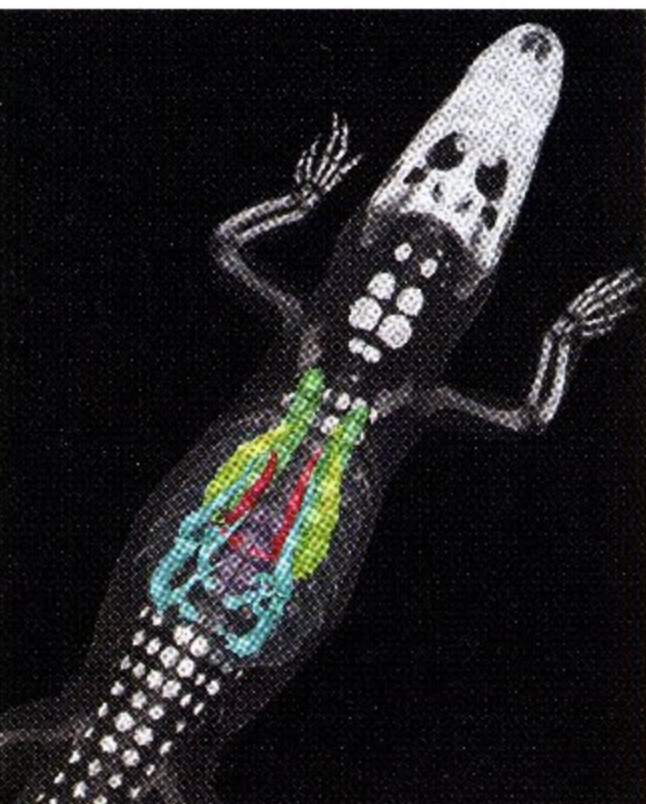




page 271



page 306



page 338

**BREVIA**

- 301 **Hungry Codons Promote Frameshifting in Human Mitochondrial Ribosomes**  
*R. Temperley et al.*  
 During translation of mitochondrial genes, shifting the ribosome reading frame avoids unconventional arginine codons.

**RESEARCH ARTICLE**

- 302 **Adaptive Evolution of Pelvic Reduction in Sticklebacks by Recurrent Deletion of a *Pitx1* Enhancer**  
*Y. F. Chan et al.*  
 Loss of a tissue-specific enhancer explains multiple parallel losses of the pelvic girdle in stickleback populations.

**REPORTS**

- 306 **Direct Imaging of Bridged Twin Protoplanetary Disks in a Young Multiple Star**  
*S. Mayama et al.*  
 An infrared image taken with the Subaru Telescope reveals young binary stars and their circumstellar environments.
- 308 **How the Shape of an H-Bonded Network Controls Proton-Coupled Water Activation in HONO Formation**  
*R. A. Relp et al.*  
 Vibrational spectroscopy uncovers the role of a surrounding water network in the mediating reaction of a solvated ion.  
 >> *Perspective p. 280*
- 313 **Electrocatalytic CO<sub>2</sub> Conversion to Oxalate by a Copper Complex**  
*R. Angamuthu et al.*  
 A copper complex can reductively couple carbon dioxide, even in the presence of oxygen.  
 >> *News story p. 257; Science Podcast*
- 315 **Ligand-Enabled Reactivity and Selectivity in a Synthetically Versatile Aryl C–H Olefination**  
*D.-H. Wang et al.*  
 A palladium-based catalyst eliminates the need for halogenated compounds for the formation of carbon-carbon bonds.
- 319 **Nanoporous Gold Catalysts for Selective Gas-Phase Oxidative Coupling of Methanol at Low Temperature**  
*A. Wittstock et al.*  
 Leaching of gold-silver alloys creates a highly active catalyst for partial oxidation reactions.  
 >> *Perspective p. 278*
- 322 **Large-Scale Controls of Methanogenesis Inferred from Methane and Gravity Spaceborne Data**  
*A. A. Bloom et al.*  
 Satellite measurements allow the strength of wetland emissions of methane to be determined.

- 326 **Lower Predation Risk for Migratory Birds at High Latitudes**  
*L. McKinnon et al.*  
 Egg predation rates measured at artificial nests along a 3000-kilometer transect decrease northwards.  
 >> *Perspective p. 276*
- 328 **The Genetic Map of *Artemisia annua* L. Identifies Loci Affecting Yield of the Antimalarial Drug Artemisinin**  
*I. A. Graham et al.*  
 A linkage map for an important medicinal crop plant points to breeding targets for enhancing drug production.  
 >> *Perspective p. 279*
- 331 **Tetrathiomolybdate Inhibits Copper Trafficking Proteins Through Metal Cluster Formation**  
*H. M. Alvarez et al.*  
 Complex formation between a copper chaperone and a metallo-drug prevents copper transfer to target enzymes.
- 335 **Global Analysis of Short RNAs Reveals Widespread Promoter-Proximal Stalling and Arrest of Pol II in *Drosophila***  
*S. Nechaev et al.*  
 The initially transcribed sequence plays a key role in inducing polymerase stalling.
- 338 **Unidirectional Airflow in the Lungs of Alligators**  
*C. G. Farmer and K. Sanders*  
 Crocodilian and bird lungs share patterns of air flow, indicating a common evolutionary origin.
- 340 **G Protein Subunit Gα<sub>13</sub> Binds to Integrin α<sub>IIb</sub>β<sub>3</sub> and Mediates Integrin “Outside-In” Signaling**  
*H. Gong et al.*  
 Cell adhesion mediated by integrins is coupled to intracellular signaling by direct binding to G proteins.
- 343 **Functional and Evolutionary Insights from the Genomes of Three Parasitoid *Nasonia* Species**  
*The Nasonia Genome Working Group*  
 The genomes of three parasitoid wasp species offer insights into speciation, insect evolution, and parasitoid biology.  
 >> *News story p. 260*
- 348 **Zebrafish Behavioral Profiling Links Drugs to Biological Targets and Rest/Wake Regulation**  
*J. Rihel et al.*  
 The effects of most neuroactive drugs are conserved and can be detected by behavioral screening.