

## EDITORIAL

- 647 Tackling Human Fungal Infections  
*Gordon D. Brown et al.*  
>> *Science Podcast*

## NEWS OF THE WEEK

- 654 A roundup of the week's top stories

## NEWS & ANALYSIS

- 658 Europe Picks Jupiter Probe; Runners-Up Vow to Press On  
659 Death of California Researcher Spurs Investigation  
660 Venus's Rare Sun Crossing May Aid Search for Exoplanets  
661 Reprise of First Experiment Casts Doubt on Supersolid Helium

## NEWS FOCUS

- 662 Primeval Land Rises From the Ashes  
>> *Science Podcast*  
664 Researchers Set Course to Blockade Ballast Invaders  
A Foul Problem  
666 With Novel Paint, Chemist Aims to Vanquish the *Vinchuca*

## LETTERS

- 668 Conservation Concerns in the Deep  
*A. C. Hartmann and L. A. Levin*  
Presumed Guilt in the Anthrax Case  
*J. Guillemin*  
Response  
*D. A. Relman*  
668 NextGenVOICES  
670 CORRECTIONS AND CLARIFICATIONS

## BOOKS ET AL.

- 671 How We Remember  
*M. E. Hasselmo, reviewed by L. L. Colgin*  
672 Harvest the Wind  
*P. Warburg, reviewed by D. Reicher*

## POLICY FORUM

- 673 ELSI 2.0 for Genomics and Society  
*J. Kaye et al.*

## PERSPECTIVES

- 675 FGF21 Takes a Fat Bite  
*C. Cantó and J. Auwerx*  
676 Understanding Earthquakes  
*P. Segall*  
>> *Report p. 707*  
678 PARP-1 Activation—Bringing the Pieces Together  
*J.-P. Gagné et al.*  
>> *Report p. 728*  
679 Intertwining Electron Tunneling with Light  
*M. H. Szymańska*  
>> *Report p. 704*  
681 RNA Plays Meiotic Matchmaker  
*A. F. Dernburg*  
>> *Report p. 732*  
682 The Ice Age Carbon Puzzle  
*E. Brook*  
>> *Report p. 711*

CONTENTS continued >>



page 662



page 671



## COVER

Enhanced-color view of the "Snowman" craters (Marcia, Calpurnia, and Minucia) on the asteroid Vesta generated by combining imaging and topography data from NASA's Dawn spacecraft. The 60-kilometer-wide Marcia crater (at bottom) is one of the youngest large craters on Vesta with a small central peak, as well as light and dark streaks on its walls. See the series of six Reports beginning on page 684.

*Image generated using Dawn Framing Camera images: Lucille Le Corre (MPS), David O'Brien (PSI), Vishnu Reddy (MPS/UND); PI of Dawn mission: Christopher T. Russell (UCLA); Dawn Framing Camera leader: Andreas Nathues (MPS), significant contributions from Ralf Jaumann (DLR)*

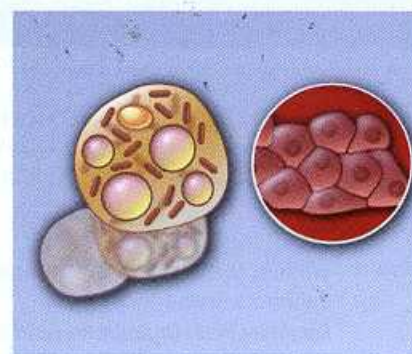
## DEPARTMENTS

- 643 This Week in *Science*  
649 Editors' Choice  
652 *Science* Staff  
751 New Products  
752 *Science* Careers

## REPORTS

- 684 **Dawn at Vesta: Testing the Protoplanetary Paradigm**  
*C. T. Russell et al.*  
>> *Science Podcast*
- 687 **Vesta's Shape and Morphology**  
*R. Jaumann et al.*
- 690 **The Violent Collisional History of Asteroid Vesta**  
*S. Marchi et al.*
- 694 **The Geologically Recent Giant Impact Basins at Vesta's South Pole**  
*P. Schenk et al.*
- 697 **Spectroscopic Characterization of Mineralogy and Its Diversity Across Vesta**  
*M. C. De Sanctis et al.*
- 700 **Color and Albedo Heterogeneity of Vesta from Dawn**  
*V. Reddy et al.*  
Spacecraft data provide a detailed characterization of the second most massive asteroid in the solar system.
- 704 **Coupling Quantum Tunneling with Cavity Photons**  
*P. Cristofolini et al.*  
Optical coupling is used to control the tunneling of electrons between a pair of quantum wells.  
>> *Perspective p. 679*
- 707 **Under the Hood of the Earthquake Machine: Toward Predictive Modeling of the Seismic Cycle**  
*S. Barbot et al.*  
Computational models predict the long-term recurrence of earthquakes along a segment of the San Andreas Fault.  
>> *Perspective p. 676*
- 711 **Carbon Isotope Constraints on the Deglacial CO<sub>2</sub> Rise from Ice Cores**  
*J. Schmitt et al.*  
The stable isotopic composition of the carbon in carbon dioxide over the last 24,000 years illuminates past carbon cycle behavior.  
>> *Perspective p. 682*
- 714 **Ancient Maya Astronomical Tables from Xultun, Guatemala**  
*W. A. Saturno et al.*  
Wall paintings in a Mayan temple dating to the 9th century C.E. show calculations of Moon and, perhaps, planetary motion.  
>> *Science Podcast*
- 717 **A Stem Cell–Based Approach to Cartilage Repair**  
*K. Johnson et al.*  
A chemical screen using mesenchymal stem cells identifies a small molecule, kartogenin, that can promote chondrogenesis.
- 721 **Differential Diffusivity of Nodal and Lefty Underlies a Reaction-Diffusion Patterning System**  
*P. Müller et al.*  
The inhibitor Lefty diffuses more widely than the activator Nodal.
- 724 **Mechanical Control of Morphogenesis by Fat/Dachsous/Four-Jointed Planar Cell Polarity Pathway**  
*F. Bosveld et al.*  
Polarized proto-cadherin and myosin induce an anisotropic tension at cell junctions and thereby shape epithelial tissue.
- 728 **Structural Basis for DNA Damage–Dependent Poly(ADP-ribosylation) by Human PARP-1**  
*M.-F. Langetier et al.*  
An enzyme that binds to damaged DNA undergoes a structural reorganization that enhances its catalytic activity.  
>> *Perspective p. 678*
- 732 **Meiosis-Specific Noncoding RNA Mediates Robust Pairing of Homologous Chromosomes in Meiosis**  
*D.-Q. Ding et al.*  
An RNA transcript helps to bring together homologous chromosomes during cell division.  
>> *Perspective p. 681*
- 736 **Epigenomic Enhancer Profiling Defines a Signature of Colon Cancer**  
*B. Akhtar-Zaidi et al.*  
Methylation tags at long-distance gene regulatory elements provide a signature specific to cancer cells.
- 740 **Recent Explosive Human Population Growth Has Resulted in an Excess of Rare Genetic Variants**  
*A. Keinan and A. G. Clark*  
Genetic models that incorporate recent human population growth can better identify mutations in large samples.
- 744 **Transcription-Independent Function of Polycomb Group Protein PSC in Cell Cycle Control**  
*A. Mohd-Sarip et al.*  
A Polycomb group protein regulates the cell cycle by promoting cyclin B ubiquitylation and degradation.

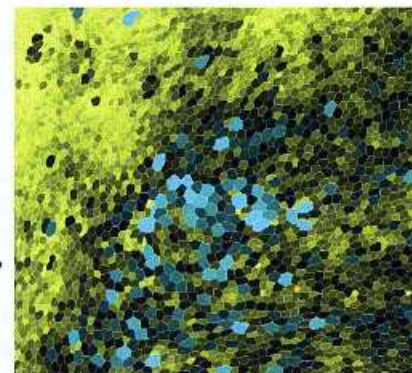
CONTENTS continued &gt;&gt;



page 675



page 714



page 724