

SPECIAL SECTION

Global health

INTRODUCTION

1256 Global health: What works

NEWS

1258 After the windfall *By M. Enserink*

1260 A hard look at global health measures *By J. Cohen*

1266 As cholera goes, so goes Haiti *By S. Kean*

1268 China tries to kick its salt habit *By M. Hvoistendahl*

1270 Zambia fights to sustain its malaria success *By K. Kupferschmidt*

OPINION

1272 Halving premature death *By R. Peto et al.*

PERSPECTIVES

1273 Putting women and girls at the center of development *M. F. Gates*

1275 The state of global health in 2014 *J. Sepúlveda and C. Murray*

1279 Getting essential health products to their end users: Subsidize, but how much? *P. Dupas*

1281 Models of education in medicine, public health, and engineering *P. Garcia et al.*

1284 Prioritizing integrated mHealth strategies for universal health coverage *G. Mehl and A. Labrique*

1287 How to transform the practice of engineering to meet global health needs *D. Niemeier et al.*

1290 Strengthening the evidence base for health programming in humanitarian crises *A. Ager et al.*

1292 Emerging, evolving, and established infectious diseases and interventions *M. E. Halloran and I. M. Longini Jr.*

1295 Virus sharing, genetic sequencing, and global health security *L. O. Gostin et al.*

1297 Monitoring parasite diversity for malaria elimination in sub-Saharan Africa *A. Ghansah et al.*

1299 Antibiotic effectiveness: Balancing conservation against innovation *R. Laxminarayan*

1302 Creating a global observatory for health R&D *R. F. Terry et al.*

▶ EDITORIAL P. 1221

▶ NEWS STORIES PP. 1228 & 1229

▶ PERSPECTIVES PP. 1243 & 1244

▶ SCIENCE TRANSLATIONAL MEDICINE CONTENT

▶ SCIENCE CAREERS STORY BY T. GURA

▶ PODCAST

▶ sciencemag.org/special/globalhealth



ON THE COVER



A woman cares for her 5-year-old grandson, who has malaria, in a hospital in northwestern Zambia. An upsurge in funding for global health over

the past 15 years has brought dramatic declines in deaths and illness from malaria and other diseases of the poor. Countries like Zambia are now trying to preserve those gains while tackling new challenges. See page 1256.

Photo: © John Stanmeyer/VII/Corbis

CONTENTS



1248 & 1310

Immune cells help feed gut microbes

12 SEPTEMBER 2014 • VOLUME 345 • ISSUE 6202

NEWS

IN BRIEF

1224 Roundup of the week's news

IN DEPTH

1228 EBOLA VACCINES RACING FORWARD AT RECORD PACE

Rushing them into widespread use without large-scale trials raises hopes and concerns *By J. Cohen*

► EDITORIAL P. 1221;

GLOBAL HEALTH SECTION P. 1256



1232

1229 EBOLA: 'WOW, THAT IS REALLY TOUGH'

WHO's Bruce Aylward says international action is needed right now *By L. Roberts*

► EDITORIAL P. 1221;

GLOBAL HEALTH SECTION P. 1256

1231 SECESSION VOTE ROCKS SCIENCE

Vying camps make bold claims about Scottish sovereignty as a blessing—or a curse—for science *By D. Clery*

1232 GIANT DINOSAUR WAS A TERROR OF CRETACEOUS WATERWAYS

Fossils offer first evidence that some dinosaurs could swim *By M. Balter*

► IBRAHIM ET AL. 10.1126/SCIENCE.1258750

1233 CHINA BLAMED FOR U.S. OZONE

Western states caught between rising background levels and more stringent federal limits *By E. Hand*

FEATURE

1234 YOUNG BLOOD

Young animals' blood holds rejuvenating powers. Amy Wagers wants to know why *By S. S. Hall*

INSIGHTS

PERSPECTIVES

1240 RNA AND DYNAMIC NUCLEAR ORGANIZATION

Long noncoding RNAs may function as organizing factors that shape the cell nucleus *By J. Rinn and M. Guttman*

1242 MORALITY BEYOND THE LAB

Much of moral life involves attending to our own good deeds and to the bad deeds of others *By J. Graham*

► REPORT P. 1340

1243 CHANGING BEHAVIORS TO PREVENT NONCOMMUNICABLE DISEASES

Altering physical and social environments can change behaviors to improve population health *By D. A. Chokshi and T. A. Farley*

► GLOBAL HEALTH SECTION P. 1256

1244 LEGISLATORS LEARNING TO INTERPRET EVIDENCE FOR POLICY

Training for making health policy that has the best impact on a population *By A. Cockcroft et al.*

► GLOBAL HEALTH SECTION P. 1256

1246 MICROBES RIDE THE CURRENT

Biogeographical diversity in bacterial populations can arise without need for natural selection *By S. Giovannoni and D. Nemergut*

► REPORT P. 1346



1243



1250

1247 DIAMOND DYNAMICS UNDER CONTROL

Ultrafast spectroscopy is used to control and manipulate quantum states in diamond *By L. Childress*

► REPORT P. 1333

1248 INNATE LYMPHOID CELLS SWEETEN THE POT

Immune cells prompt gut epithelial cells to produce carbohydrate nutrients for resident bacteria *By L. V. Hooper*

► RESEARCH ARTICLE P. 1310

1250 A GLOBAL STRATEGY FOR PROTECTING VULNERABLE COASTAL POPULATIONS

Short-term emergency response and long-run investments are needed *By E. B. Barbier*

BOOKS ET AL.

1252 THE DYSLEXIA DEBATE

By J. G. Elliott and E. L. Grigorenko, reviewed by L. E. Cutting

1253 THE IMPROBABILITY PRINCIPLE

By D. J. Hand, reviewed by E. Limbrick-Oldfield

LETTERS

1254 RETRACTION

By T. Okada et al.

1254 LIVESTOCK CRUCIAL IN HUNGER EQUATION

By M. F. Rothschild and H. Steinfield

1255 ANCIENT TRADE BETWEEN INDIA AND INDONESIA

By A. Calo

1255 ERRATA



RESEARCH

IN BRIEF

1306 From *Science* and other journals

RESEARCH ARTICLES

1310 MUCOSAL IMMUNOLOGY

Innate lymphoid cells regulate intestinal epithelial cell glycosylation *Y. Goto et al.*

RESEARCH ARTICLE SUMMARY; FOR FULL TEXT:

dx.doi.org/10.1126/science.1254009

► PERSPECTIVE P. 1248

1311 IMMUNOGENETICS

Intersection of population variation and autoimmunity genetics in human T cell activation *C. J. Ye et al.*

RESEARCH ARTICLE SUMMARY; FOR FULL TEXT:

dx.doi.org/10.1126/science.1254665

1312 PHOTOACCLIMATION

Extensive remodeling of a cyanobacterial photosynthetic apparatus in far-red light *F. Gan et al.*

1317 PLANETARY DYNAMICS

Chaotic dynamics of stellar spin in binaries and the production of misaligned hot Jupiters *N. I. Storch et al.*



REPORTS

1322 LOW-DENSITY MATERIALS

Strong, lightweight, and recoverable three-dimensional ceramic nanolattices *L. R. Meza et al.*

1326 WATER SPLITTING

Decoupled catalytic hydrogen evolution from a molecular metal oxide redox mediator in water splitting *B. Rausch et al.*

1330 BLACK HOLE PHYSICS

Rapid growth of seed black holes in the early universe by supra-exponential accretion *T. Alexander and P. Natarajan*

1333 QUANTUM INFORMATION

Ultrafast optical control of orbital and spin dynamics in a solid-state defect *L. C. Bassett et al.*

► PERSPECTIVE P. 1247

1337 MAGNETISM

All-optical control of ferromagnetic thin films and nanostructures *C.-H. Lambert et al.*

1340 SOCIAL PSYCHOLOGY

Morality in everyday life *W. Hofmann et al.*

► PERSPECTIVE P. 1242

1343 BIODIVERSITY LOSS

Loss of avian phylogenetic diversity in neotropical agricultural systems *L. O. Frishkoff et al.*

1346 MICROBIAL ECOLOGY

Biogeographic patterns in ocean microbes emerge in a neutral agent-based model *F. L. Hellweger et al.*

► PERSPECTIVE P. 1246

1349 ERROR MEMORY

A memory of errors in sensorimotor learning *D. J. Herzfeld et al.*

1354 ICE SHEETS

Boundary condition of grounding lines prior to collapse, Larsen-B Ice Shelf, Antarctica *M. Rebesco et al.*

FISH PIGMENTATION

1358 Thyroid hormone-dependent adult pigment cell lineage and pattern in zebrafish *S. K. McMenamin et al.*

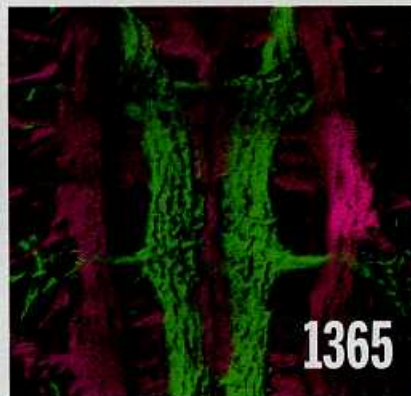
1362 Local reorganization of anthophores fine-tunes and colors the striped pattern of zebrafish *P. Mahalwar et al.*

1365 ORIGIN OF NOTOCHORD

Development of the annelid axochord: Insights into notochord evolution *A. Lauri et al.*

1369 VIRAL EVOLUTION

Genomic surveillance elucidates Ebola virus origin and transmission during the 2014 outbreak *S. K. Gire et al.*



DEPARTMENTS

1221 EDITORIAL

Ebola's perfect storm

By Peter Piot

► NEWS STORIES PP. 1228 & 1229;

GLOBAL HEALTH SECTION P. 1256

1414 WORKING LIFE

The career I dreamed of?

By Gale Rhodes

Science Staff	1218
New Products	1373
Science Careers	1374

SCIENCE (ISSN 0036-8075) is published weekly on Friday, except the last week in December, by the American Association for the Advancement of Science, 1200 New York Avenue, NW, Washington, DC 20005. Periodicals mail postage (publication No. 484460) paid at Washington, DC, and additional mailing offices. Copyright © 2014 by the American Association for the Advancement of Science. The title SCIENCE is a registered trademark of the AAAS. Domestic individual membership and subscription (51 issues): \$153 (\$74 allocated to subscription). Domestic institutional subscription (51 issues): \$1282; Foreign postage extra. Mexico, Caribbean (surface mail) \$55; other countries (air assist delivery) \$85. First class, airmail, student, and emeritus rates on request. Canadian rates with GST available upon request. GST #1254 88122. Publications Mail Agreement Number 1069624. Printed in the U.S.A. Change of address: Allow 4 weeks, giving old and new addresses and 8-digit account number. Postmaster: Send change of address to AAAS, P.O. Box 96178, Washington, DC 20090-6178. Single-copy sales: \$10.00 current issue, \$15.00 back issue prepaid includes surface postage; bulk rates on request. Authorization to photocopy material for internal or personal use under circumstances not falling within the fair use provisions of the Copyright Act is granted by AAAS to libraries and other users registered with the Copyright Clearance Center (CCC) Transactional Reporting Service, provided that \$30.00 per article is paid directly to CCC, 222 Rosewood Drive, Danvers, MA 01923. The identification code for Science is 0036-8075. Science is indexed in the Reader's Guide to Periodical Literature and in several specialized indexes.