

EDITORIAL

- 1301 Peace Through Vaccine Diplomacy
Peter J. Hotez
 >> *Science Podcast*

NEWS OF THE WEEK

- 1308 Chile's Earthquake May Set Back Research for Years
- 1309 The Puzzling Rise and Fall of a Dark-Horse Alzheimer's Drug
- 1311 Severe Drought Puts Spotlight on Chinese Dams
- 1312 From *Science's* Online Daily News Site
- 1312 New Tuberculosis Lab Hailed as Breakthrough in Health Diplomacy
- 1313 From the *Science* Policy Blog
- 1314 APA Seeks to Overhaul Personality Disorder Diagnoses
- 1315 A Civil Conversation About Animals in Research
- 1316 Elsevier to Editor: Change Controversial Journal or Resign
- 1317 Matchmaking Is Part of the Party as ARPA-E Marks Its First Birthday

NEWS FOCUS

- 1318 On Rarity and Richness
 >> *Science Podcast*
- 1320 Ironing Out Consensus on the Iron-Based Superconductors
- 1322 NASA Dives Into Its Past to Retrieve Vintage Satellite Data

LETTERS

- 1325 Rebuilding Haiti Smarter
T. Dixon et al.
 The Hidden Face of Haiti's Tragedy
M. Ben-Ezra et al.
 The Fate of Atlantic Bluefin Tuna
J.-M. Fromentin
 Applying Privacy Guidelines
S. Guo et al.
 Response
T. Mitchell

1327 CORRECTIONS AND CLARIFICATIONS

BOOKS ET AL.

- 1329 The Trauma Myth
S. A. Clancy, reviewed by E. F. Loftus and S. J. Frenda
- 1330 Inventing Equal Opportunity
F. Dobbin, reviewed by A.-M. Marshall

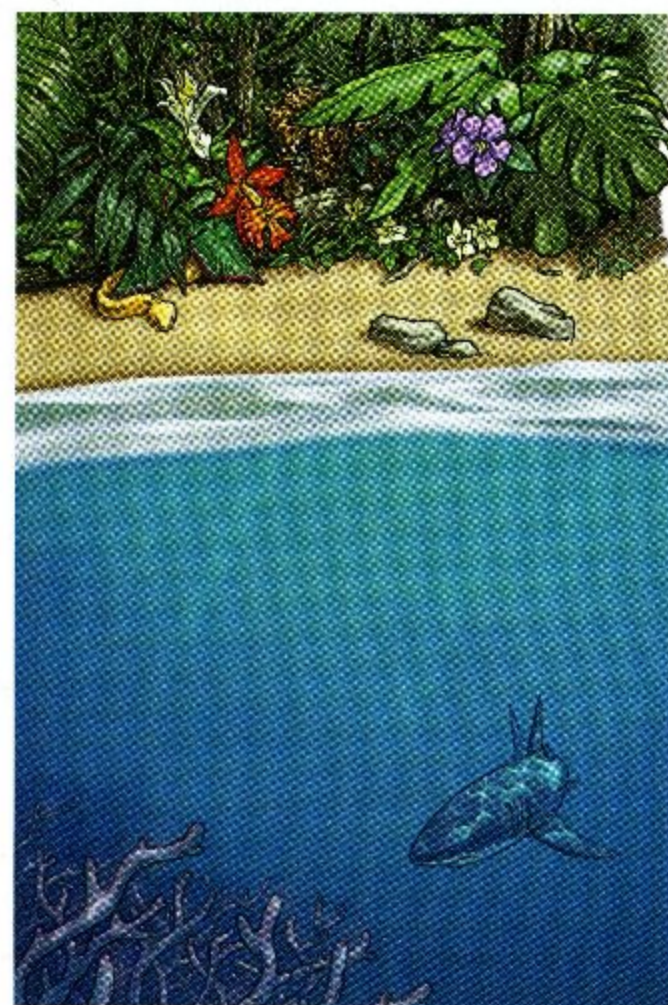
POLICY FORUM

- 1331 Elephants, Ivory, and Trade
S. Wasser et al.

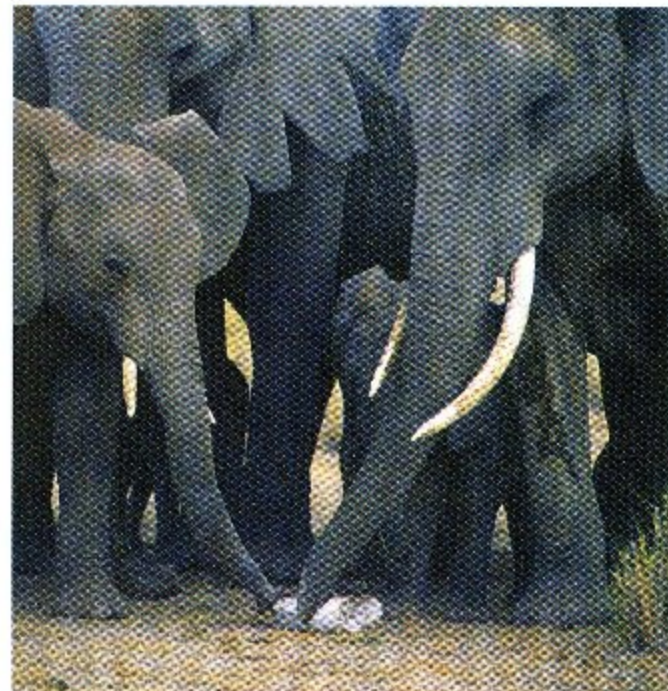
PERSPECTIVES

- 1333 Random Quantum Networks
D. S. Wiersma
 >> *Report p. 1352*
- 1334 Trees, Fast and Accurate
E. S. Allman and J. A. Rhodes
 >> *Report p. 1376*
- 1335 Enforcing Order on Signaling
M. Paszek and V. Weaver
 >> *Report p. 1380*
- 1337 Remote Enzyme Microsurgery
J. M. Bollinger Jr. and M. L. Matthews
 >> *Report p. 1392*
- 1338 Revealing Titan's Interior
F. Sohl
 >> *Report p. 1367*
- 1339 Interesting Times for Marine N₂O
L. A. Codispoti

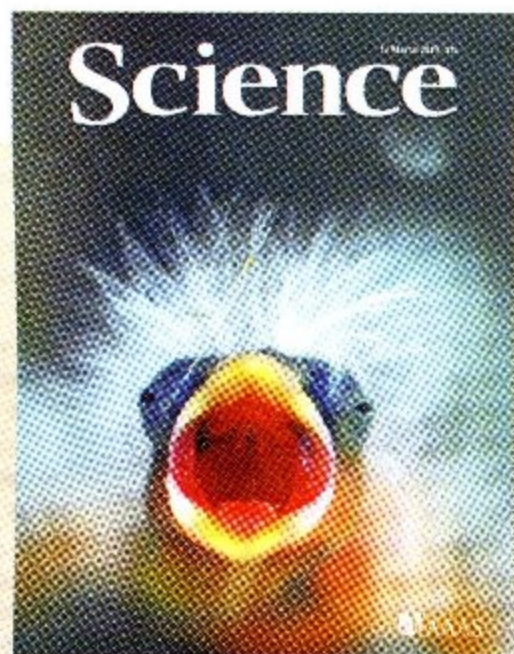
CONTENTS continued >>



page 1318



page 1331



COVER

Substances deposited by a mother bird into her eggs influence how intensely her offspring beg for food after hatching. In canaries, these substances are effectively a prenatal signal of parental generosity. In contrast to the common assumption, they function primarily to serve the evolutionary interests of the offspring rather than the mother. See page 1373.

Photo: Fernando Trabanco

DEPARTMENTS

- 1297 This Week in *Science*
- 1303 Editors' Choice
- 1306 *Science* Staff
- 1307 Random Samples
- 1395 New Products
- 1396 *Science* Careers

REVIEW

- 1341 **Altruism, Spite, and Greenbeards**
S. A. West and A. Gardner

RESEARCH ARTICLE

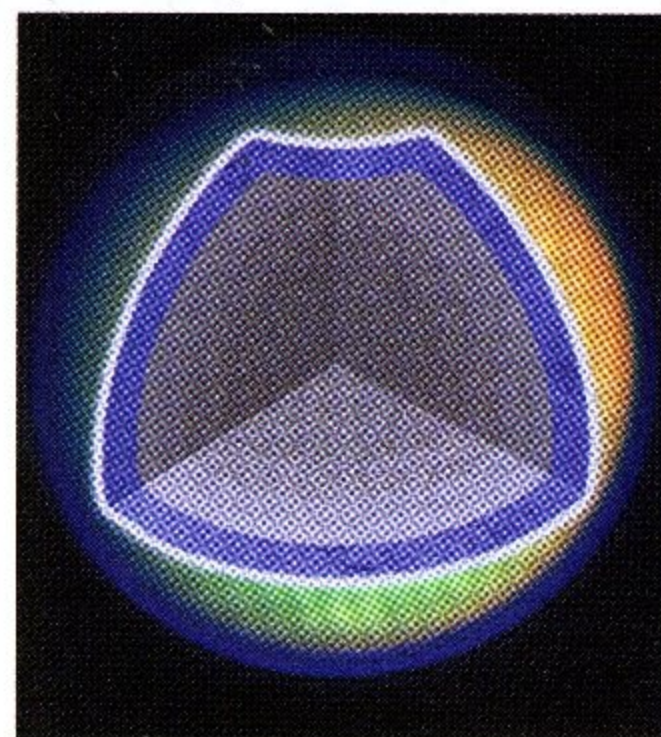
- 1345 **Identification of a Primary Target of Thalidomide Teratogenicity**
T. Ito et al.
Thalidomide exerts its damaging effects by binding to cereblon and blocking its activity in limb development.

REPORTS

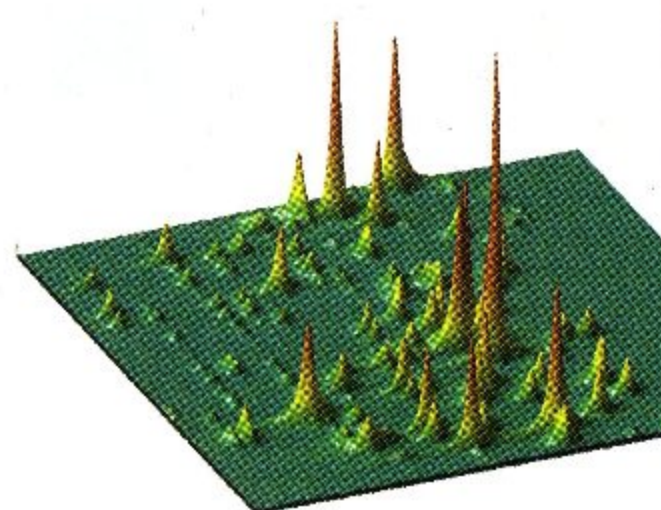
- 1350 **Variations in the Sun's Meridional Flow over a Solar Cycle**
D. H. Hathaway and L. Rightmire
Observed variations in the Sun's poleward flow have consequences for models and predictions of the solar cycle.
- 1352 **Cavity Quantum Electrodynamics with Anderson-Localized Modes**
L. Sapienza et al.
Optical scattering is used to induce quantum coupling between light and an artificial atom.
>> *Perspective p. 1333*
- 1355 **Light-Controlled Self-Assembly of Semiconductor Nanoparticles into Twisted Ribbons**
S. Srivastava et al.
The photooxidation of cadmium sulfide nanoparticles within cadmium telluride nanoparticle ribbons causes surface stresses that lead to twisting.
- 1359 **The Near-Tip Fields of Fast Cracks**
A. Livne et al.
The linear and nonlinear elastic responses near a growing crack tip can reveal how materials fail.
- 1363 **Imaging Local Electrochemical Current via Surface Plasmon Resonance**
X. Shan et al.
The concentration of electrochemically active species on a gold electrode provides a local measurement of current density.
- 1367 **Gravity Field, Shape, and Moment of Inertia of Titan**
L. Iess et al.
Analysis of gravity data reveals that Saturn's moon Titan has a partially differentiated internal structure.
>> *Perspective p. 1338*

- 1369 **Plumage Color Patterns of an Extinct Dinosaur**
Q. Li et al.
Comparison of melanosome shape and density between fossil feathers and modern ones reveals the appearance and color of a theropod.
- 1373 **Parent-Offspring Conflict and Coadaptation**
C. A. Hinde et al.
Prenatal hormonal signaling can match a mother bird's capacity to provide food with her offspring's expectations.
>> *Science Podcast*
- 1376 **Toward Extracting All Phylogenetic Information from Matrices of Evolutionary Distances**
S. Roch
Methods recently developed for taxonomic analysis are fast and do not compromise accuracy.
>> *Perspective p. 1334*
- 1380 **Restriction of Receptor Movement Alters Cellular Response: Physical Force Sensing by EphA2**
K. Salaita et al.
Mechanical forces acting on a cell-surface receptor affect the activation of a signaling pathway involved in breast cancer.
>> *Perspective p. 1335*
- 1385 **Lgr6 Marks Stem Cells in the Hair Follicle That Generate All Cell Lineages of the Skin**
H. J. Snippert et al.
Skin wounds can be repaired by primitive stem cells into fully differentiated tissue, complete with hairs and sebaceous glands.
- 1389 **Structural Sources of Robustness in Biochemical Reaction Networks**
G. Shinar and M. Feinberg
Models of metabolic regulation show how the stability of specific components is maintained within a varying environment.
- 1392 **In Crystallo Posttranslational Modification Within a MauG/Pre-Methylamine Dehydrogenase Complex**
L. M. R. Jensen et al.
Bacterial ammonia and formaldehyde production requires prior processing of a dehydrogenase to form a cofactor.
>> *Perspective p. 1337*

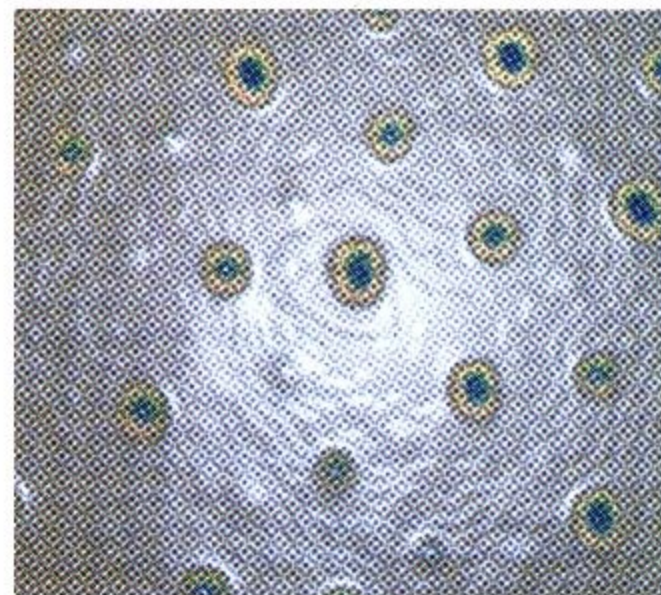
CONTENTS continued >>



pages 1338 & 1367



pages 1333 & 1352



page 1385