

EDITORIAL

- 722 **Speak Up for Science Funding**
Alan I. Leshner and Mary Woolley

NEWS OF THE WEEK

- 726 **A roundup of the week's top stories**

NEWS & ANALYSIS

- 728 **Scientists Assess Damage From Sandy's Deadly Punch**
>> Report p. 788
- 730 **Did Pulses of Climate Change Drive the Rise and Fall of the Maya?**
>> Report p. 788
- 731 **Lung-on-a-Chip Breathes New Life Into Drug Discovery**
>> Sci. Transl. Med. Research Articles by D. Huh et al. and K. S. Thorne et al. and Perspective by D. M. Dambach and H. Uppal
- 732 **As Drug Pilot Wraps Up, a Lively Debate About Its Future**
- 733 **Question of Martian Methane Is Still Up in the Air**

NEWS FOCUS

- 734 **Weather Forecasts Slowly Clearing Up**
One Sandy Forecast a Bigger Winner Than Others
>> Science Podcast
- 738 **Poor but Smart**

LETTERS

- 740 **Limits to Religious Conservation Efforts**
B. Gong et al.
- Credit Due to Peter Higgs**
J. Ellis
- Evolution's Misleading Language**
A. N. Burdett
- 742 **TECHNICAL COMMENT ABSTRACTS**
- 742 **CORRECTIONS AND CLARIFICATIONS**

BOOKS ET AL.

- 743 **Visible Empire**
D. Bleichmar, reviewed by P. H. Smith
- 744 **Measurement**
P. Lockhart, reviewed by B. Finegold

POLICY FORUM

- 745 **Law and Science Collide Over Human Gene Patents**
R. Cook-Deegan

PERSPECTIVES

- 748 **A Decorated Virus Cannot Hide**
R. W. Herzog and D. A. Ostrov
>> Report p. 795
- 749 **Constraints on Sexual Selection**
M. J. Wade
>> Report p. 802
- 750 **Emerging Disease or Diagnosis?**
S. K. Gire et al.
- 752 **Driving the Formation of Molecular Knots**
J. S. Siegel
>> Report p. 783
- 754 **A Single-Molecule Engine**
M. W. Bockrath
>> Report p. 779
- 755 **Constraining Cloud Feedbacks**
K. M. Shell
>> Report p. 792
- 756 **Epigenetic Islands in a Genetic Ocean**
D. Schübeler

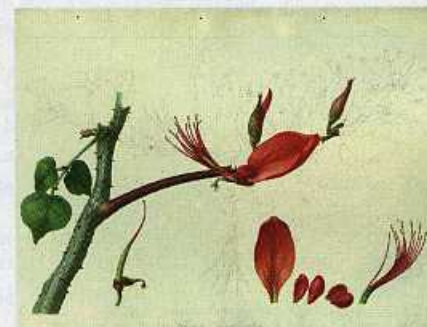
ASSOCIATION AFFAIRS

- 758 **Presidential Address: Transposable Elements, Epigenetics, and Genome Evolution**
N. V. Fedoroff

CONTENTS continued >>



page 734



page 743



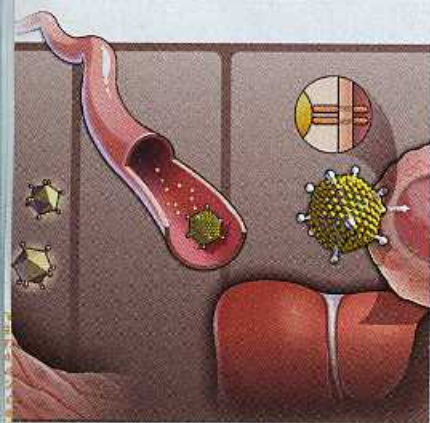
COVER

Masks on the facade of the Codz Poop Palace (Kabah site, Yucatan, Mexico). Kabah and other Maya sites in the Puuc region flourished during the Terminal Classic Period (800 to 1000 C.E.), while cities to the south collapsed as the climate became drier. Political collapse was part of a complex two-stage societal response to global climate change. See page 788.

Photo: Getty Images/DEA/G. Dagli Orti

DEPARTMENTS

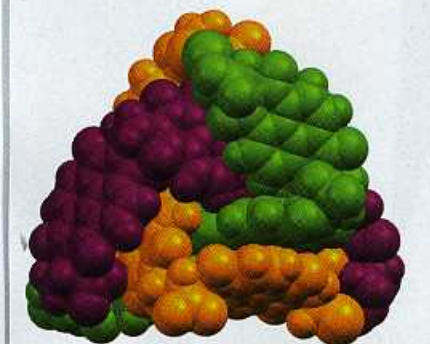
- 720 **This Week in Science**
- 723 **Editors' Choice**
- 724 **Science Staff**
- 825 **New Products**
- 826 **Science Careers**



pages 748 & 795



page 773



pages 752 & 783

REVIEW

- 768 **Hepcidin and the Iron-Infection Axis**
H. Drakesmith and A. M. Prentice

REPORTS

- 773 **An Interacting Binary System Powers Precessing Outflows of an Evolved Star**
H. M. J. Boffin et al.
Spectra of a planetary nebula's central star reveal a companion star responsible for launching the system's rotating jets.
- 775 **Polarity-Switching Top Coats Enable Orientation of Sub-10-nm Block Copolymer Domains**
C. M. Bates et al.
A chemical reaction in a thin polymer film imposes orientational ordering of lamellar domains in an underlying film.
- 779 **Driving a Macroscopic Oscillator with the Stochastic Motion of a Hydrogen Molecule**
C. Lotze et al.
The random motion of an activated hydrogen molecule produces forces that drive periodic motions of a scanning probe cantilever.
>> *Perspective p. 753*
- 783 **Discovery of an Organic Trefoil Knot**
N. Pannuswamy et al.
Hydrophobic interactions appear to steer three molecular fragments into a knot, rather than a simpler ring geometry.
>> *Perspective p. 752*
- 785 **Tissint Martian Meteorite: A Fresh Look at the Interior, Surface, and Atmosphere of Mars**
H. Chennaoui Aoudjehane et al.
A meteorite that fell in Morocco in July 2011 provides a sample to study processes that operated on Mars 700,000 years ago.
- 788 **Development and Disintegration of Maya Political Systems in Response to Climate Change**
D. J. Kennett et al.
A record of rainfall from a stalagmite in southern Belize provides a context for better understanding Maya civilization.
>> *News story p. 730; Science Podcast*
- 792 **A Less Cloudy Future: The Role of Subtropical Subsidence in Climate Sensitivity**
J. T. Fasullo and K. E. Trenberth
Seasonal variations in tropospheric relative humidity may provide an observational constraint on climate sensitivity.
>> *Perspective p. 755*
- 795 **Coagulation Factor X Activates Innate Immunity to Human Species C Adenovirus**
K. Doronin et al.
Tagging adenovirus with a serum protein prompts an immune response when the virus enters cells.
>> *Perspective p. 748*
- 798 **Germ Cell Migration Across Sertoli Cell Tight Junctions**
B. E. Smith and R. E. Braun
Syncytial germ cell chains span a network of transient compartments to cross the blood-testis barrier in adult mice.
- 802 **Bateman in Nature: Predation on Offspring Reduces the Potential for Sexual Selection**
J. Byers and S. Dunn
The relationship between mate number and offspring output in male pronghorn confirms Bateman's findings.
>> *Perspective p. 749*
- 804 **Corals Chemically Cue Mutualistic Fishes to Remove Competing Seaweeds**
D. L. Dixon and M. E. Hay
Goby fish remove toxic algae from their coral habitat, becoming more distasteful to predators in the process.
>> *Science Podcast*
- 807 **A Core Metabolic Enzyme Mediates Resistance to Phosphine Gas**
D. I. Schlupialius et al.
Mutations in a lipic acid metabolism enzyme confer resistance to phosphine but also result in sensitivity to arsenite.
- 810 **Optical Control of Protein Activity by Fluorescent Protein Domains**
X. X. Zhou et al.
Shining light onto an engineered fluorescent protein controls the activity of domains fused to the protein.
- 815 **Intramitochondrial Transport of Phosphatidic Acid in Yeast by a Lipid Transfer Protein**
M. Connerth et al.
A lipid transfer protein, *Ups1*, controls the accumulation of cardiolipin in mitochondrial outer and inner membranes.
- 818 **IRE1 α Cleaves Select microRNAs During ER Stress to Derepress Translation of Proapoptotic Caspase-2**
J.-P. Upton et al.
Protein misfolding stimulates the destruction of microRNAs and the synthesis of an enzyme that promotes cell death.
- 822 **Mitochondrial Network Size Scaling in Budding Yeast**
S. M. Rafelski et al.
Yeast cells produce buds with uniform mitochondrial content, even as the aging mother cell loses out.