

EDITORIAL

- 13 Science Attachés in Embassies
Farouk El-Baz

NEWS OF THE WEEK

- 18 Conflicting Papers on Hold as XMRV Frenzy Reaches New Heights
19 India Launches New Probe of Cyanide Disaster
20 Evidence for Free-Flowing Supersolid Slipping Away?
21 From *Science's* Online Daily News Site
21 From the *Science* Policy Blog
22 Hunting for Plumes, Learning to Live in a Media Spotlight
23 How to Kill a Well So That It's Really Most Sincerely Dead

NEWS FOCUS

- 24 The Seductive Allure of Behavioral Epigenetics
A Role for Epigenetics in Cognition
>> *Science Podcast*
28 In Archaeobotanist's Hands, Tiny Fossils Yield Big Answers
30 Righting a 65-Year-Old Wrong

LETTERS

- 32 Racial Differences in Breast Cancer Patterns
L. Shi
Cryptic Loss of India's Native Forests
J.-P. Puyravaud et al.
Variability of Our Somatic (Epi)Genomes
V. Sgaromella

- FDA Regulations for Drug Development
R. E. Behrman and J. Woodcock
Response
A. D. Levinson

33 CORRECTIONS AND CLARIFICATIONS

BOOKS ET AL.

- 34 Science Tourism:
Some Stops for Summer Trips

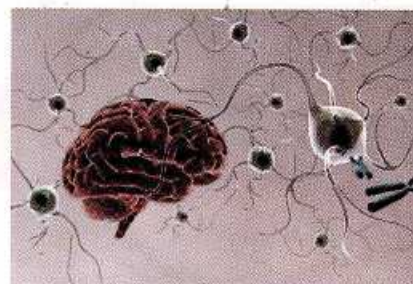
POLICY FORUM

- 38 Synthetic "Life," Ethics, National Security, and Public Discourse
M. K. Cho and D. A. Relman
>> *Research Article p. 52; Science Podcast*

PERSPECTIVES

- 40 Genes for High Altitudes
J. F. Storz
>> *Reports pp. 72 and 75*
41 Tropical Arthropod Species, More or Less?
R. M. May
42 Downsizing the Hydrated Electron's Lair
K. D. Jordan and M. A. Johnson
>> *Report p. 65*
44 A Guardian of T Cell Fate
J. P. Di Santo
>> *Reports pp. 85, 89, and 93*
45 To Cool or Not to Cool
V. Bromm
>> *Report p. 69*

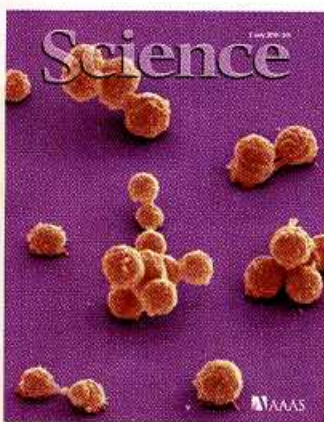
CONTENTS continued >>



page 24



page 34



COVER

Electron micrograph of *Mycoplasma mycoides* JCVI-syn1.0 cells (magnification ~25,000×). These cells were produced following transplantation of a 1.08-megabase pair synthetic *M. mycoides* genome into *M. capricolum* recipient cells. The cells are controlled by the synthetic genome, exhibit the expected phenotypic properties, and are capable of self-replication, thus providing proof of principle for the production of cells from digitized sequence information. See page 52.
Photo: Thomas Deerinck and Mark Ellisman, National Center for Microscopy and Imaging Research, University of California at San Diego

DEPARTMENTS

- 10 This Week in Science
14 Editors' Choice
16 Science Staff
17 Random Samples
97 New Products
98 Science Careers

REVIEW

- 47 **The Unconscious Will: How the Pursuit of Goals Operates Outside of Conscious Awareness**
R. Custers and H. Aarts

BREVIA

- 51 **Graphite in an Apollo 17 Impact Melt Breccia**
A. Steele et al.
Ancient carbonaceous material possibly delivered during meteorite bombardment has been found in lunar rock.

RESEARCH ARTICLE

- 52 **Creation of a Bacterial Cell Controlled by a Chemically Synthesized Genome**
D. G. Gibson et al.
A synthetic *Mycoplasma mycoides* genome transplanted into *M. capricolum* was able to control the host cell.
>> *Policy Forum p. 38*

REPORTS

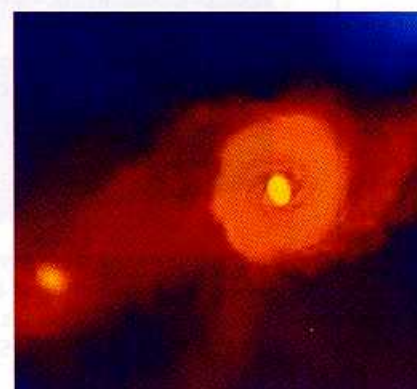
- 57 **A Giant Planet Imaged in the Disk of the Young Star β Pictoris**
A.-M. Lagrange et al.
The Very Large Telescope reveals that a huge planet formed within a star's dusty disk in a few million years.
- 59 **Controlled Injection of Spin-Triplet Supercurrents into a Strong Ferromagnet**
J. W. A. Robinson et al.
Unusual magnetic ordering in a rare earth metal is used to create superconducting currents with aligned spins.
- 61 **Quantized Anomalous Hall Effect in Magnetic Topological Insulators**
R. Yu et al.
Magnetically doped topological insulators are predicted to be ferromagnetic and exhibit the quantum anomalous Hall effect.
- 65 **Does the Hydrated Electron Occupy a Cavity?**
R. E. Larsen et al.
A long-standing model of the solvent geometry surrounding a free charge in water is questioned by new numerical simulations.
>> *Perspective p. 42*

- 69 **Experimental Results for H_2 Formation from H^- and H and Implications for First Star Formation**
H. Kreckel et al.
Precise measurements of molecular hydrogen formation rates help improve models of star assembly in the early universe.
>> *Perspective p. 45*
- 72 **Genetic Evidence for High-Altitude Adaptation in Tibet**
T. S. Simonson et al.
A candidate gene approach reveals genes under selection in humans living at high altitudes.
- 75 **Sequencing of 50 Human Exomes Reveals Adaptation to High Altitude**
X. Yi et al.
Sequencing coding regions identified genetic changes that were likely involved in adaptation to hypoxia.
>> *Perspective p. 40*
- 78 **Genome-Wide Reprogramming in the Mouse Germ Line Entails the Base Excision Repair Pathway**
P. Hajkova et al.
Removing epigenetic marks early in mammalian development involves a DNA damage repair pathway.
- 82 **Increased Mutagenesis and Unique Mutation Signature Associated with Mitotic Gene Conversion**
W. M. Hicks et al.
Repair of double-strand breaks in the genome is accompanied by highly elevated levels of mutagenesis.
- 85 **Reprogramming of T Cells to Natural Killer-Like Cells upon *Bcl11b* Deletion**
P. Li et al.
- 89 **An Early T Cell Lineage Commitment Checkpoint Dependent on the Transcription Factor *Bcl11b***
L. Li et al.
- 93 **An Essential Developmental Checkpoint for Production of the T Cell Lineage**
T. Ikawa et al.
A transcription factor is essential for maintenance of T cell identity.
>> *Perspective p. 44*

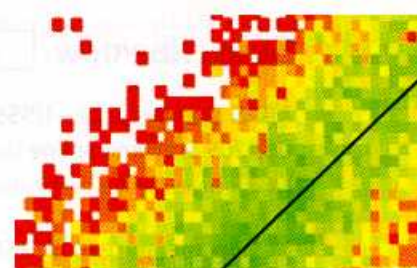
CONTENTS continued >>



page 41



pages 45 & 69



pages 40, 72, & 75