

EDITORIAL

- 889 **A New Dawn for Science in Africa**
Roy Maartens and George Ellis
 >> *Science Podcast*

NEWS OF THE WEEK

- 896 A roundup of the week's top stories

NEWS & ANALYSIS

- 899 **Panel Says NSF Should Shutter Six U.S. Instruments**
- 900 **Dinosaur Kingpin Opens Fossil Bonanza to Science**
- 902 **New Method Puts Elusive Indo-European Homeland in Anatolia**
 >> *Report p. 957*
- 903 **Calling All Baby Boomers: Get Your Hepatitis C Test**

NEWS FOCUS

- 904 **The Great Guppy Experiment**
 Eco-Evo Effects Up and Down the Food Chain
 >> *Science Podcast*
- 909 **Economic Crisis Forces Spanish Archaeology to Rethink Its Roots**

LETTERS

- 910 **Personalized Medicine: Temper Expectations**
D. W. Nebert and G. Zhang
- Response**
R. Drmanac
- Response**
L. R. Brunham and M. R. Hayden

- 911 **CORRECTIONS AND CLARIFICATIONS**

BOOKS ET AL.

- 912 **Rereading the Fossil Record**
D. Sepkoski, reviewed by J. Beatty
- 913 **Bird Sense**
T. Birkhead, reviewed by H. S. Young

POLICY FORUM

- 914 **Water Security: Research Challenges and Opportunities**
K. Bakker

PERSPECTIVES

- 916 **Probing Black Hole Gravity**
J. C. McKinney
 >> *Report p. 949*
- 917 **A Long View on Climate Sensitivity**
L. Skinner
- 919 **How to Read the Chromatin Past**
V. Pirrotta
 >> *Report p. 971*
- 921 **Retaining the Nano in Nanocrystalline Alloys**
J. R. Weertman
 >> *Report p. 951*
- 922 **The Unusual Case of Porcupine**
L. Lum and H. Clevers
- 924 **Walking on Solid Ground**
B. F. Dickey
 >> *Research Article p. 937*
- 925 **Glycosylation to Adapt to Stress**
K. R. Mattaini and M. G. Vander Heiden
 >> *Report p. 975*

CONTENTS continued >>



page 904



page 913



COVER

Artist's rendering of the airway epithelial cell surface in human lungs. The airway surface is lined by arrays of cylindrical cilia (shown as yellow projections) that are 7 micrometers long and 200 nanometers in diameter. The cilia and airway surface are covered by tethered biomacromolecules (shown as green hairs) that form dense, brushlike structures. These epithelial brushes protect the airways from infectious agents and ensure efficient flow of mucus from healthy lungs. See page 937. For the story behind the cover, go to <http://scim.ag/cov6097>.

Image: Yan Liang (www.t2xy2.com), Li-Heng Cai, Michael Rubinstein

DEPARTMENTS

- 886 *This Week in Science*
- 891 *Editors' Choice*
- 894 *Science Staff*
- 989 *New Products*
- 990 *Science Careers*

REVIEWS

- 927 **Luminous Supernovae**
A. Gal-Yam
- 932 **Gamma-Ray Bursts**
N. Gehrels and P. Mészáros

RESEARCH ARTICLE

- 937 **A Periciliary Brush Promotes the Lung Health by Separating the Mucus Layer from Airway Epithelia**
B. Button et al.
The lung is protected by a brushlike biopolymer that contributes to mucus flow and can trigger muco-obstructive diseases.
>> *Perspective p. 924*

REPORTS

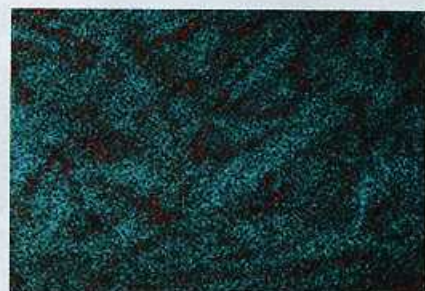
- 942 **PTF 11kx: A Type Ia Supernova with a Symbiotic Nova Progenitor**
B. Dilday et al.
Spectroscopic data imply that a stellar explosion arose from a binary consisting of a white dwarf and a red giant star.
>> *Science Podcast*
- 946 **Absorption Features in the X-ray Spectrum of an Ordinary Radio Pulsar**
O. Kargaltsev et al.
Data from two x-ray space observatories reveal unexpected spectral features in a common, rotating, magnetized compact star.
- 949 **A 200-Second Quasi-Periodicity After the Tidal Disruption of a Star by a Dormant Black Hole**
R. C. Reis et al.
Oscillations in x-ray emission from a galaxy's central black hole imply that a disc formed after the hole captured a star.
>> *Perspective p. 916*
- 951 **Design of Stable Nanocrystalline Alloys**
T. Chookajorn et al.
Designed nanostructured alloys, amenable to large-scale production, show high-temperature thermal stability.
>> *Perspective p. 921*
- 954 **Stepwise Evolution of Spherical Seeds into 20-Fold Twinned Icosahedra**
M. R. Langille et al.
The growth of silver nanoparticles from plasmonic gold nanocrystals was tracked by electron microscopy.
- 957 **Mapping the Origins and Expansion of the Indo-European Language Family**
R. Bouckaert et al.
Spatial models of language lineage evolution support an Anatolian homeland for Indo-European languages.
>> *News story p. 902; Science Podcast*

- 960 **Assembly of an Evolutionarily New Pathway for α -Pyrone Biosynthesis in *Arabidopsis***
J.-K. Weng et al.
A neofunctionalized copy of a plant P450 enzyme allows synthesis of pyrone-bearing secondary metabolites, called arabidopyrones.
- 964 **Cis-Acting Transcriptional Repression Establishes a Sharp Boundary in Chordate Embryos**
K. S. Imai et al.
The conserved tandem arrangement of *Pinhead* and *Admp* genes is important for their mutually exclusive expression.
- 967 **Landscape of Somatic Retrotransposition in Human Cancers**
E. Lee et al.
Whole-genome sequencing provides evidence for somatic insertions in colorectal, prostate, and ovarian cancers.
- 971 **Dense Chromatin Activates Polycomb Repressive Complex 2 to Regulate H3 Lysine 27 Methylation**
W. Yuan et al.
The density and compaction state of chromatin directly regulates the activity of a transcription repressor protein complex.
>> *Perspective p. 919*
- 975 **Phosphofruktokinase 1 Glycosylation Regulates Cell Growth and Metabolism**
W. Yi et al.
Inhibition of a key metabolic enzyme reprograms metabolic flux toward pathways critical for cancer cell proliferation.
>> *Perspective p. 925*
- 980 **Neurexin and Neuroligin Mediate Retrograde Synaptic Inhibition in *C. elegans***
Z. Hu et al.
Two synaptic adhesion molecules that have been implicated in psychiatric diseases affect the kinetics of synaptic events.
- 984 **Strategy-Dependent Encoding of Planned Arm Movements in the Dorsal Premotor Cortex**
T. M. Pearce and D. W. Moran
The amount of preparatory neural activity in the brain depends on movement complexity and conscious planning.

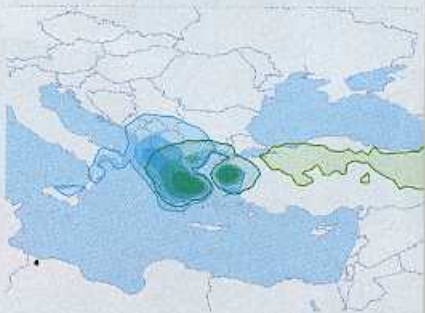
CONTENTS continued >>



page 917



pages 921 & 951



pages 902 & 957