

EDITORIAL

- 996 **What Is STEM Education?**
Rodger W. Bybee

NEWS OF THE WEEK

- 1000 **New XMRV Paper Looks Good, Skeptics Admit—Yet Doubts Linger**
- 1001 **Hard Summer for Corals Kindles Fears for Survival of Reefs**
- 1002 **Astronomers Hope Their Prize Telescope Isn't Blinded by the Light**
- 1003 **U.S. Physicists Eye Australia for New Site of Gravitational-Wave Detector**
- 1004 **To Scientists' Dismay, Mixed-Up Cell Lines Strike Again**
- 1005 **From *Science's* Online Daily News Site**
- 1006 **Organizers Panned for Omitting Israelis From Meeting in Jordan**
- 1006 **NSF Turns Math Earmark on Its Ear to Fund New Institute**
- 1007 **From the *Science* Policy Blog**

NEWS FOCUS

- 1008 **Google Earth Shows Clandestine Worlds**
>> Science Podcast
- 1010 **From Pigs to People: The Emergence of a New Superbug**

LETTERS

- 1012 **Dietary Restriction: Standing Up for Sirtuins**
J. A. Baur et al.
- Response**
L. Fontana and L. Partridge
- Response**
V. D. Longo
- Dietary Restriction: Theory Fails to Siate**
L. Hayflick
- Response**
L. Fontana et al.

- 1013 **TECHNICAL COMMENT ABSTRACTS**

BOOKS ET AL.

- 1016 **Teaching Children Science**
S. G. Kohlstedt, reviewed by M. V. Barrow Jr.
- 1017 **The Invisible Gorilla**
C. Chabris and D. Simons, reviewed by A. Oliva

POLICY FORUM

- 1018 **Scenario-Building for the Deepwater Horizon Oil Spill**
G. E. Machlis and M. K. McNutt

PERSPECTIVES

- 1020 **Fine-Scale Modeling of Global Plate Tectonics**
T. Becker
>> Research Article p. 1033
- 1021 **Prime, Boost, and Broaden**
R. W. Doms
>> Report p. 1060
- 1022 **Decisions Made Better**
M. O. Ernst
>> Report p. 1081
- 1024 **Microenvironment Mimicry**
M. Bhatia
>> Report p. 1078
- 1025 **Opening the Door to Peptide-Based Porous Solids**
P. A. Wright
>> Report p. 1053
- 1026 **Looking Inside Adenovirus**
S. C. Harrison
>> Research Article p. 1038; Report p. 1071

SCIENCE PRIZE ESSAY

- 1028 **The Universe Online**
M. J. Raddick and A. S. Szalay

BREVIA

- 1032 **CoRoT Reveals a Magnetic Activity Cycle in a Sun-Like Star**
R. A. García et al.
Observations of a distant star reveal a magnetic activity cycle similar to that of the Sun.

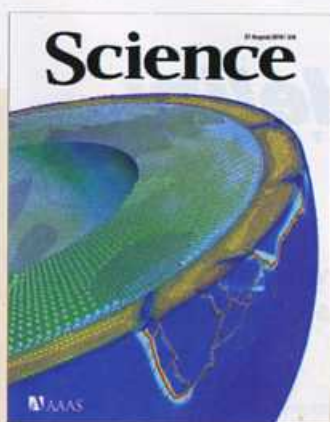
CONTENTS continued >>



page 1001



page 1016



COVER

Dynamic interaction of tectonic plates in the southwest Pacific Ocean computed from a flow model of Earth's interior (arrows show predicted velocity). The computational mesh, for which color represents viscosity (yellow, softer; blue, stiffer), is refined to resolve the forces in the deep mantle that are coupled directly into the edges of plates through narrow slabs. Red lines indicate low-viscosity zones corresponding to plate boundaries. See page 1033.
Image: Georg Stadler, The University of Texas at Austin

DEPARTMENTS

- 995 **This Week in *Science***
- 997 **Editors' Choice**
- 998 ***Science* Staff**
- 999 **Random Samples**
- 1030 **AAAS News & Notes**
- 1089 **New Products**
- 1090 ***Science* Careers**

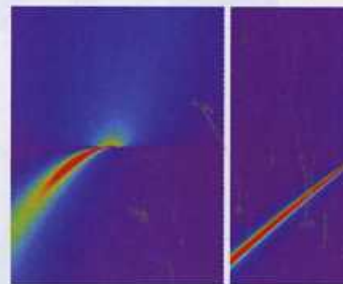
RESEARCH ARTICLES

- 1033 **The Dynamics of Plate Tectonics and Mantle Flow: From Local to Global Scales**
 G. Stadler et al.
 Computational advances enable the modeling of global geophysical processes to the scale of a kilometer.
 >> *Perspective p. 1020*
- 1038 **Atomic Structure of Human Adenovirus by Cryo-EM Reveals Interactions Among Protein Networks**
 H. Liu et al.
 High-resolution structures provide a basis for optimizing adenovirus as a vaccine and gene-therapy vector.
 >> *Perspective p. 1026; Report p. 1071*

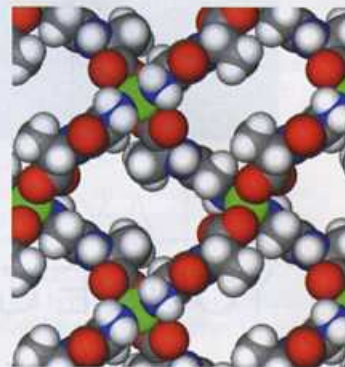
REPORTS

- 1043 **Strange Metal Transport Realized by Gauge/Gravity Duality**
 T. Faulkner et al.
 Black hole theory is used to develop a mathematical description of a class of metals with unusual electronic properties.
- 1047 **Dynamical Instability Produces Transform Faults at Mid-Ocean Ridges**
 T. Gerya
 Transform faults on the sea floor are rotated and stretched sections of the mid-ocean ridge.
- 1050 **The Chlorine Isotope Composition of the Moon and Implications for an Anhydrous Mantle**
 Z. D. Sharp et al.
 The range of chlorine isotope values of the Moon is distinct from those of Earth and meteorites, indicating that the Moon is dry.
- 1053 **An Adaptable Peptide-Based Porous Material**
 J. Rabone et al.
 Conformational changes in a porous material during the sorption of small molecules lead to a dynamic increase in porosity.
 >> *Perspective p. 1025*
- 1057 **Trapping a Diradical Transition State by Mechanochemical Polymer Extension**
 J. M. Lenhardt et al.
 Strained carbon rings in the backbone of a polymer can be opened by external application of shear forces.

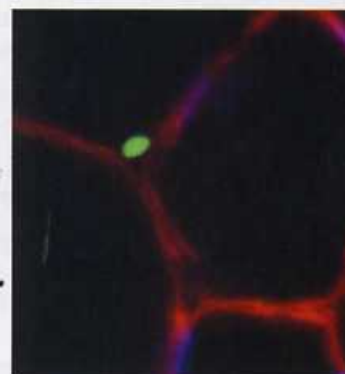
- 1060 **Induction of Broadly Neutralizing H1N1 Influenza Antibodies by Vaccination**
 C.-J. Wei et al.
 An influenza virus vaccine elicits a broadly neutralizing, cross-protective antibody response in mice, ferrets, and nonhuman primates.
 >> *Perspective p. 1021*
- 1065 **Secreted Peptide Signals Required for Maintenance of Root Stem Cell Niche in *Arabidopsis***
 Y. Matsuzaki et al.
 Short-range signaling by sulfated peptides maintains root stem cells.
- 1068 **Genomic Comparison of the Ants *Camponotus floridanus* and *Harpegnathos saltator***
 R. Bonasio et al.
 Comparison reveals the epigenetic controls on caste development in ants.
 >> *Science Podcast*
- 1071 **Crystal Structure of Human Adenovirus at 3.5 Å Resolution**
 V. S. Reddy et al.
 High-resolution structures provide a basis for optimizing adenovirus as a vaccine and gene-therapy vector.
 >> *Perspective p. 1026; Research Article p. 1038*
- 1075 **Insects Betray Themselves in Nature to Predators by Rapid Isomerization of Green Leaf Volatiles**
 S. Allmann and I. T. Baldwin
 Damage caused by a caterpillar releases compounds that are transformed by the pest's saliva into a predator attractant.
- 1078 **Substrate Elasticity Regulates Skeletal Muscle Stem Cell Self-Renewal in Culture**
 P. M. Gilbert et al.
 Muscle stem cells prefer a soft substrate.
 >> *Perspective p. 1024*
- 1081 **Optimally Interacting Minds**
 B. Bahrami et al.
 Sharing choices and confidence in those choices can be an empowering experience.
 >> *Perspective p. 1022*
- 1085 **Phosphatidic Acid Is a pH Biosensor That Links Membrane Biogenesis to Metabolism**
 B. P. Young et al.
 Lipid signaling in yeast is regulated by intracellular pH.



page 1043



pages 1025 & 1053



pages 1024 & 1078

CONTENTS continued >>