

- 1642 Enabling New Missions for Robotic Aircraft  
J. W. Langelaan and N. Roy

- 1644 Mining Our Reality  
T. M. Mitchell

## ASSOCIATION AFFAIRS

- 1646 Reflections On: Our Planet and Its Life, Origins, and Futures  
J. J. McCarthy

## BREVIA

- 1662 Regiodivergent Ring Opening of Chiral Aziridines  
B. Wu et al.  
A bimetallic catalyst selects different ring-opening sites, depending on the chiral configuration of the substrate.

## RESEARCH ARTICLES

- 1663 Stepwise Modification of a Modular Enhancer Underlies Adaptation in a *Drosophila* Population  
M. Rebeiz et al.  
A combination of new and previously existing mutations in gene regulatory sequences can drive morphological evolution.  
>> News story p. 1612
- 1668 Crystal Structure of the Eukaryotic Strong Inward-Rectifier K<sup>+</sup> Channel Kir2.2 at 3.1 Å Resolution  
X. Tao et al.  
A structure reveals the basis of diode-like conduction properties and toxin insensitivity of these channels.

## REPORTS

- 1675 Formation and Survival of Water Vapor in the Terrestrial Planet-Forming Region  
T. Bethell and E. Bergin  
Water in protoplanetary disks shields water molecules in deeper layers of the disk from destructive ultraviolet radiation.
- 1677 Spatial Organization of Hominin Activities at Geshen Benot Ya'aqov, Israel  
N. Alperson-Afil et al.  
The spatial distribution of artifacts implies that living space was organized by use as early as 800,000 years ago.
- 1680 Mozambican Grass Seed Consumption During the Middle Stone Age  
J. Mercader  
Residues on stone tools imply that early humans were processing grass seeds by 100,000 years ago.

- 1683 Universality in Three- and Four-Body Bound States of Ultracold Atoms  
S. E. Pollack et al.

The interactions involved in the formation of few-body bound states can be probed in a cloud of ultracold atoms.  
>> Perspective p. 1640

- 1686 Experimental Observations of Stress-Driven Grain Boundary Migration  
T. J. Rupert et al.

Shear stresses drive grain boundaries to move in a manner consistent with predictions of coupled grain boundary migration.

- 1690 Real-Time Observation of Carbonic Acid Formation in Aqueous Solution  
K. Adamczyk et al.

The use of a photoacid enables the long-sought characterization of the conjugate acid of bicarbonate.

- 1694 Bacterial Community Variation in Human Body Habitats Across Space and Time  
E. K. Costello et al.

The composition of microbial communities on the human body is primarily determined by their location.

- 1698 The Fanconi Anemia Pathway Promotes Replication-Dependent DNA Interstrand Cross-Link Repair  
P. Knipscheer et al.

Insertion of a nucleotide during the repair of a complex lesion in DNA requires tagging of a lysine residue.

- 1701 Indirect Punishment and Generosity Toward Strangers  
A. Ule et al.

Frequent rewards spiced with occasional punishment are a recipe for the evolution of cooperation.

- 1704 On the Origin of Species by Natural and Sexual Selection  
G. S. van Doorn et al.

Modeling demonstrates how speciation occurs due to sexual selection.  
>> Perspective p. 1639

- 1707 Structure of the LKB1-STRAD-MO25 Complex Reveals an Allosteric Mechanism of Kinase Activation  
E. Zeqiraj et al.

A "pseudokinase" activates the LKB1 tumor suppressor protein without catalyzing phosphorylation.

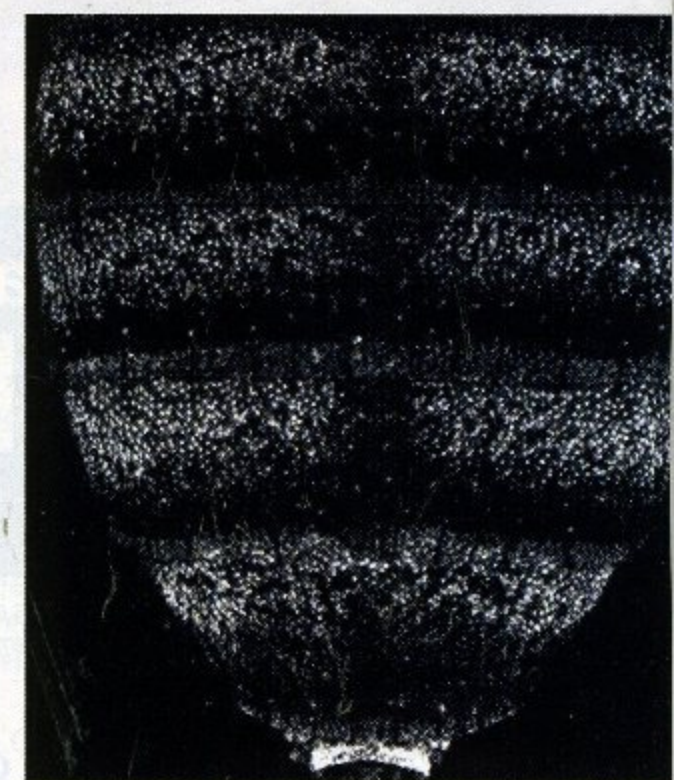
- 1711 The Subtle Transmission of Race Bias via Televised Nonverbal Behavior  
M. Weisbuch et al.

Nonverbal behaviors can contribute to implicit bias in intergroup attitudes.  
>> Perspective p. 1641

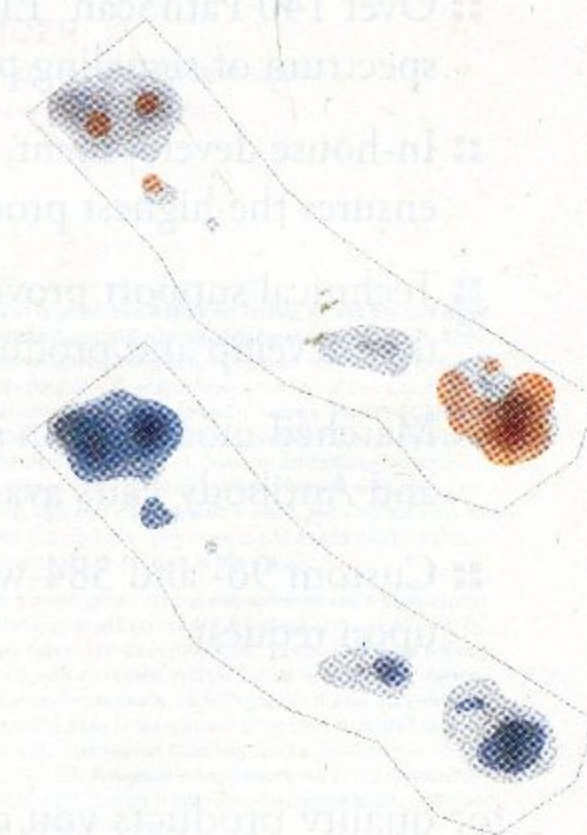
CONTENTS continued >>



page 1634



pages 1612 & 1663



page 1677

SPECIAL SECTION

## Breakthrough of the Year

**WINNER**

1598 *Ardipithecus ramidus*

**RUNNERS-UP**

- 1600 Opening Up the Gamma Ray Sky
- 1600 ABA Receptors
- 1601 Mock Monopoles Spotted
- 1602 Live Long and Prosper
- 1603 An Icy Moon Revealed
- 1604 Gene Therapy Returns
- 1605 Graphene Takes Off
- 1606 Hubble Reborn
- 1607 First X-ray Laser Shines

**OTHER FEATURES**

- 1602 Scorecard: Rating Last Year's Areas to Watch
- 1604 Breakdown Revisited: Trying to Stay Afloat
- 1606 Areas to Watch
- 1607 Virus of the Year: The Novel H1N1 Influenza

>> Editorial p. 1589; Science Podcast; for related online content, go to [www.sciencemag.org/btoy2009/](http://www.sciencemag.org/btoy2009/)



page 1614

**EDITORIAL**

- 1589 The Breakthroughs of 2009  
*Bruce Alberts*  
>> Breakthrough of the Year section p. 1598

**NEWS OF THE WEEK**

- 1608 Congress Takes Care of Science in Quiet Finish to a Busy Year
- 1609 Terrorism Charges Against Grad Student Raise Questions
- 1610 A Dark Tale Behind Two Retractions
- 1611 Chair of Science Panel to Leave Congress
- 1611 From *Science's* Online Daily News Site
- 1612 Spineless Fish and Dark Flies Prove Gene Regulation Crucial  
>> Report p. 1663
- 1613 Sarkozy's 'Grand Loan' Bets That Research Will Pay Off
- 1613 From the *Science* Policy Blog

**NEWS FOCUS**

- 1614 Peril in the Pamirs  
Burdened by Soviet Legacy, Nations Spar Over Water Rights
- 1618 U.S. Poised to Adopt National Ocean Policy
- 1619 Melanoma Drug Vindicates Targeted Approach
- 1620 Ecological Genomics Gets Down to Genes—and Function

**LETTERS**

- 1631 Time for DNA Disclosure  
*D. E. Krane et al.*  
Weighing Reward and Punishment  
*J. Baron*
- Response  
*D. G. Rand et al.*

**1633 CORRECTIONS AND CLARIFICATIONS**

**BOOKS ET AL.**

- 1634 Portfolios of the Poor  
*D. Collins et al., reviewed by A. Krishna*

- 1635 Living Weapons  
*G. D. Koblentz; Breeding Bio Insecurity*  
*L. C. Klotz and E. J. Sylvester, reviewed by B. Balmer*

- 1635 Browsings

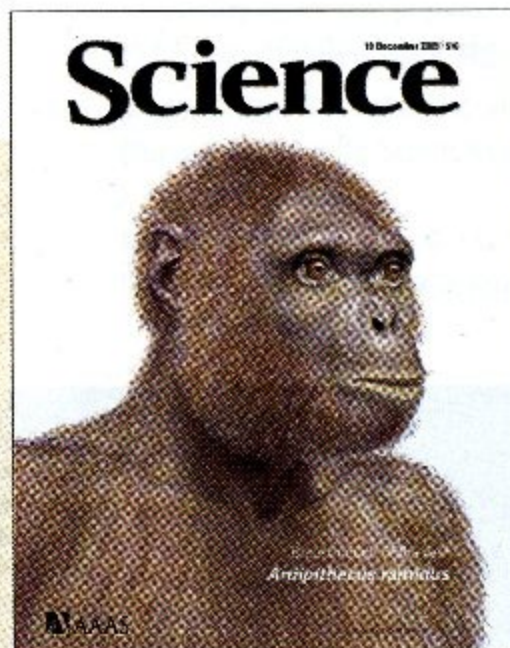
**EDUCATION FORUM**

- 1637 The Nation's Report Card: A Vision of Large-Scale Science Assessment  
*A. C. Fu et al.*

**PERSPECTIVES**

- 1639 Sexual Selection and Darwin's Mystery of Mysteries  
*J. E. Mank*  
>> Report p. 1704
- 1640 Universal Few-Body Binding  
*G. Modugno*  
>> Report p. 1683
- 1641 Racial Bias, Unspoken But Heard  
*J. F. Dovidio*  
>> Report p. 1711

**CONTENTS continued >>**



**COVER**

*Ardipithecus ramidus*, a possible human ancestor, inhabited then-wooded regions of Ethiopia 4.4 million years ago. This year, studies of the fossilized skeleton of a member of the species raised surprising questions about how key human traits evolved. See the Breakthrough of the Year special section beginning on page 1598 and at [www.sciencemag.org/btoy2009/](http://www.sciencemag.org/btoy2009/).

Image: © 2009, Jay Matternes

**DEPARTMENTS**

- 1587 This Week in *Science*
- 1590 Editors' Choice
- 1592 *Science* Staff
- 1597 Random Samples
- 1656 AAAS News & Notes
- 1715 New Products
- 1716 *Science* Careers