

## SPECIAL SECTION

## Data Replication &amp; Reproducibility

## INTRODUCTION

1225 Again, and Again, and Again...

## PERSPECTIVES

1226 Reproducible Research  
in Computational Science

*R. D. Peng*

1227 Methodological Challenges in the  
Study of Primate Cognition

*M. Tomasello and J. Call*

1229 Replication in Field Biology:  
The Case of the Frog-Eating Bat

*M. J. Ryan*

1230 Improving Validation Practices  
in "Omics" Research

*J. P. A. Ioannidis and M. J. Khoury*

1232 The Reproducibility of Observational  
Estimates of Surface and Atmospheric  
Temperature Change

*B. D. Santer et al.*

>> Editorial p. 1182; News stories pp. 1194 and 1200;  
Readers' Poll p. 1203; Science Careers p. 1179; and  
[www.sciencemag.org/special/data-rep/](http://www.sciencemag.org/special/data-rep/)



page 1194

## EDITORIAL

1182 Addressing Scientific Fraud

*Jennifer Crocker and M. Lynne Cooper*

>> Retraction p. 1202; Data Replication &  
Reproducibility section p. 1225

## NEWS OF THE WEEK

1186 A roundup of the week's top stories

## NEWS &amp; ANALYSIS

1189 Dispute Over Lab Notebooks  
Lands Researcher in Jail

1191 Berkeley Engineering Students Demand  
Greater Effort to Promote Diversity

1192 Controversial Studies Give a  
Deadly Flu Virus Wings

## NEWS FOCUS

1194 Aging Genes: The Sirtuin Story Unravels

>> Data Replication & Reproducibility  
section p. 1225; Science Podcast

1199 'Third Pole' Glacier Research Gets a Boost  
From China

1200 Where Does the Time Go?

>> Data Replication & Reproducibility  
section p. 1225

## LETTERS

1202 Retraction

*D. A. Stapel and S. Lindenberg*

>> Editorial p. 1182

Lobsters at Bat

*M. Mendelson*

Top-Flight Safety Model for  
Nuclear Industry

*J. R. Skayles*

Response

*M. Bunn and O. Heinonen*

Readers' Poll: The Well-Behaved Scientist

>> Data Replication & Reproducibility  
section p. 1225

1203 CORRECTIONS AND CLARIFICATIONS

1203 TECHNICAL COMMENT ABSTRACTS

## BOOKS ET AL.

1204 Some Suggestions for 2011—  
The SB&F/Subaru Prizes Finalists

1207 From the UK—Finalists for the Royal  
Society's Young People's Book Prize

1208 Browsings

## POLICY FORUM

1210 Better Data for a Better Internet

*J. Palfrey and J. Zittrain*

>> Science Podcast

## PERSPECTIVES

1212 Yeast Informs Alzheimer's Disease

*L. McGurk and N. M. Bonini*

>> Research Article p. 1241

1213 Quantum Correlation Between  
Distant Diamonds

*L.-M. Duan*

>> Report p. 1253

1214 Mathematical Dances with Wolves

*S. J. Schreiber*

>> Report p. 1275

1216 The Pristine Universe

*G. G. Kacprzak*

>> Research Article p. 1245

1217 Personalized Cancer Diagnostics

*C. L. Corless*

1219 Warburg Effect and Redox Balance

*R. B. Hamanaka and N. S. Chandel*

>> Report p. 1278

1220 Experimenting with Buddies

*M. J. van der Leij*

>> Report p. 1269

CONTENTS continued >>



## COVER

As streams of data continue to grow in size and complexity, the need to ensure that scientific results are reliable has become even greater. The special section beginning on page 1225 and associated Editorial, News, Careers, and Readers' Poll features explore the opportunities and the challenges of replicating or reproducing data in a variety of fields.

Image: iStockphoto.com

## DEPARTMENTS

1180 This Week in Science

1183 Editors' Choice

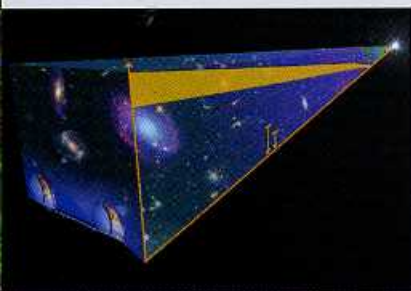
1185 Science Staff

1298 New Products

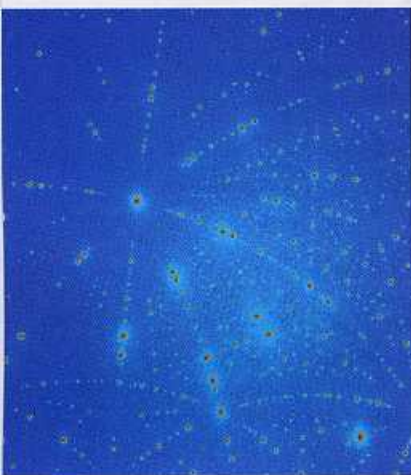
1299 Science Careers



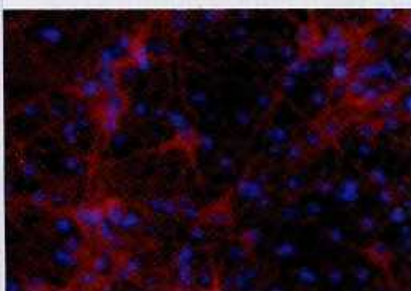
page 1204



pages 1216 &amp; 1245



page 1234



pages 1212 &amp; 1241

## GE PRIZE ESSAY

- 1222 **Zoom!**  
*E. Lieberman Aiden*

## REVIEW

- 1234 **The Race to X-ray Microbeam and Nanobeam Science**  
*G. E. Ice et al.*

## BREVIA

- 1240 **The 2011 Tohoku-Oki Earthquake: Displacement Reaching the Trench Axis**  
*T. Fujiwara et al.*  
Vertical and horizontal displacement that occurred up to the Japan trench likely contributed to formation of the tsunami.

## RESEARCH ARTICLES

- 1241 **Functional Links Between A $\beta$  Toxicity, Endocytic Trafficking, and Alzheimer's Disease Risk Factors in Yeast**  
*S. Treusch et al.*  
The use of yeast as a model organism reveals cellular factors involved in beta-amyloid toxicity.  
>> *Perspective p. 1212*
- 1245 **Detection of Pristine Gas Two Billion Years After the Big Bang**  
*M. Fumagalli et al.*  
Two cosmic clouds have been observed with a composition close to that of the universe before the first stars were formed.  
>> *Perspective p. 1216; Report p. 1250*

## REPORTS

- 1250 **Protostellar Feedback Halts the Growth of the First Stars in the Universe**  
*T. Hosokawa et al.*  
Simulations suggest that most of the first stars in the universe might have been less massive than previously thought.  
>> *Research Article p. 1245*
- 1253 **Entangling Macroscopic Diamonds at Room Temperature**  
*K. C. Lee et al.*  
Optical pulses are used to quantum mechanically entangle two diamonds several centimeters apart.  
>> *Perspective p. 1213*
- 1256 **Enhancing Hydrogen Evolution Activity in Water Splitting by Tailoring Li<sup>+</sup>-Ni(OH)<sub>2</sub>-Pt Interfaces**  
*R. Subbaraman et al.*  
Combining two different types of catalysts accelerated the hydrogen-generation step in water electrolysis.
- 1261 **The Role of Carbon Dioxide During the Onset of Antarctic Glaciation**  
*M. Pagani et al.*  
Antarctica glaciation began soon after a large decrease in the concentration of atmospheric carbon dioxide around 35 million years ago.

- 1265 **Interhemispheric Ice-Sheet Synchronicity During the Last Glacial Maximum**  
*M. E. Weber et al.*  
Part of the East Antarctic Ice Sheet advanced and retreated in synchrony with Northern Hemispheric ice sheets.
- 1269 **An Experimental Study of Homophily in the Adoption of Health Behavior**  
*D. Centola*  
Greater similarity of paired obese participants in an online network increased access to and adoption of health behaviors.  
>> *Perspective p. 1220*
- 1272 **Specialized Face Learning Is Associated with Individual Recognition in Paper Wasps**  
*M. J. Sheehan and E. A. Tibbetts*  
Social wasps that can discriminate faces are specialized for facial learning, whereas other closely related species are not.  
>> *Science Podcast*
- 1275 **Modeling Effects of Environmental Change on Wolf Population Dynamics, Trait Evolution, and Life History**  
*T. Coulson et al.*  
Analysis of a 20-year data set on Yellowstone wolves reveals that environmental change generates eco-evolutionary responses.  
>> *Perspective p. 1214*
- 1278 **Inhibition of Pyruvate Kinase M2 by Reactive Oxygen Species Contributes to Cellular Antioxidant Responses**  
*D. Anastasiou et al.*  
The glycolytic metabolism of cancers differs from normal tissues, allowing tumor cells to survive under oxidative stress.  
>> *Perspective p. 1219*
- 1283 **Hemoglobins S and C Interfere with Actin Remodeling in *Plasmodium falciparum*-Infected Erythrocytes**  
*M. Cyrklaff et al.*  
The malaria parasite mines actin from the membrane skeleton of its erythrocyte host to generate a cytoskeletal structure.
- 1286 **Robust Crossover Assurance and Regulated Interhomolog Access Maintain Meiotic Crossover Number**  
*S. Rosu et al.*  
DNA breaks that drive crossing over between chromosomes in meiosis are tightly regulated in space and time.
- 1289 **Increasing the Potency and Breadth of an HIV Antibody by Using Structure-Based Rational Design**  
*R. Diskin et al.*  
Structural analysis of an HIV antibody reveals residues important for neutralization breadth and potency.
- 1293 **The Intraepithelial T Cell Response to NKG2D-Ligands Links Lymphoid Stress Surveillance to Atopy**  
*J. Strid et al.*  
Epidermal abrasion and T cells in the skin work together to drive the type of immune responses seen in allergy and asthma.