

EDITORIAL

- 393 Improving Access to Research
Paul N. Courant et al.

NEWS OF THE WEEK

- 398 Foreshadowing Haiti's Catastrophe
- 399 Models Foresee More-Intense Hurricanes in the Greenhouse
>> Report p. 454
- 400 African Physicists Set Their Sights on Mammoth Scope
- 401 Killing of Professor Sparks Fight Over His Science and His Politics
- 401 From *Science's* Online Daily News Site
- 402 Google Plots Exit Strategy As China Shores Up 'Great Firewall'
- 402 Under Fire From Pharma, Institute May Lose Its Director
- 403 From the *Science* Policy Blog

NEWS FOCUS

- 404 The Tangled Roots of Agriculture
>> Science Podcast
- 407 Trends Document China's Prowess
- 408 Fall Meeting of the American Geophysical Union
Flows on Mars But No Water
Magnetics Point to Magma 'Ocean' at Io
Antarctic Glacier Off Its Leash
Snapshots from the Meeting

LETTERS

- 410 Studying Extant Species to Model Our Past
A. Whiten et al.
Response
C. O. Lovejoy et al.
- Carbon Accounting a Tricky Business
A. J. Friedland and K. T. Gillingham
- East German Institutes Stand Tall
E. Th. Rietschel

BOOKS ET AL.

- 413 Questioning Collapse
P. A. McAnany and N. Yoffee, Eds., reviewed by K. Lewis
- 414 Pink Brain, Blue Brain
L. Eliot, reviewed by A. S. Henderson

POLICY FORUM

- 415 Accessible Reproducible Research
J. P. Mesirov

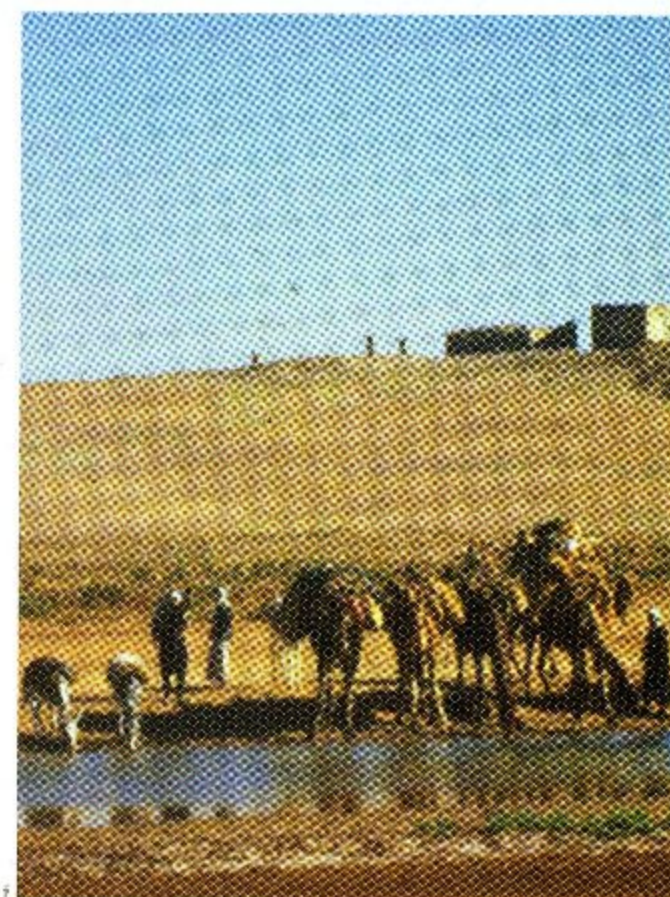
PERSPECTIVES

- 417 Subversion from the Sidelines
N. Argarwal and W. R. Bishai
>> Report p. 466
- 418 Drylands in the Earth System
D. S. Schimel
>> Report p. 451
- 419 Amoeba-Inspired Network Design
W. Marwan
>> Report p. 439
- 420 And Then There Were None?
R. G. Roberts and B. W. Brook
- 422 Adjusting the Solar System's Absolute Clock
J. N. Connelly
>> Report p. 449
- 423 Epitaxial Growth Writ Large
T. L. Einstein and T. J. Stasevich
>> Report p. 445

RESEARCH ARTICLE

- 425 The Genetic Landscape of a Cell
M. Costanzo et al.
A genome-wide interaction map of yeast identifies genetic interactions, networks, and function.

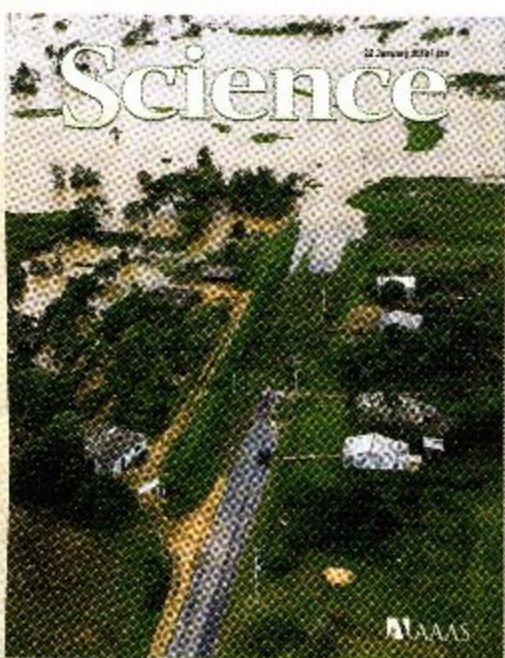
CONTENTS continued >>



page 404



page 414



COVER

Hurricane Ike caused extensive damage throughout the Caribbean and Gulf of Mexico regions in September 2008, as shown here at Pinar del Rio in western Cuba. A state-of-the-art computer model projects that global warming should cause an increase in the frequency of the most intense western Atlantic hurricanes, like Ike, during the 21st century. See page 454.

Photo: Claudia Daut/Reuters/Landov

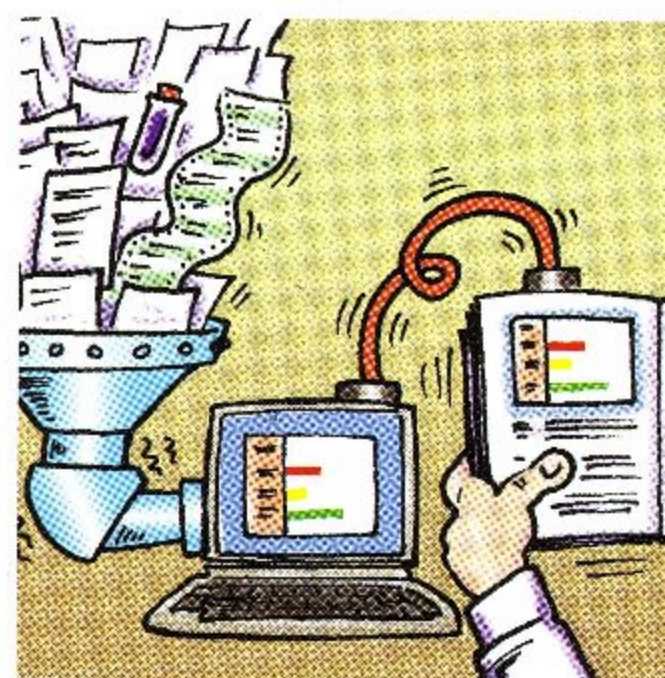
DEPARTMENTS

- 391 This Week in *Science*
- 394 Editors' Choice
- 396 *Science* Staff
- 397 Random Samples
- 478 New Products
- 479 *Science* Careers

REPORTS

- 432 **Formation of Iapetus' Extreme Albedo Dichotomy by Exogenically Triggered Thermal Ice Migration**
J. R. Spencer and T. Denk
- 435 **Iapetus: Unique Surface Properties and a Global Color Dichotomy from Cassini Imaging**
T. Denk et al.
Thermal migration of water ice explains the observed color asymmetry of Saturn's unusual moon, Iapetus.
- 439 **Rules for Biologically Inspired Adaptive Network Design**
A. Tero et al.
Human municipal transportation engineers might learn design strategies from the lowly slime mold.
>> *Perspective p. 419*
- 442 **Measurement of Universal Thermodynamic Functions for a Unitary Fermi Gas**
M. Horikoshi et al.
Cold Fermi gases are used to study resonant fermion-fermion interactions.
- 445 **Direct Measurements of Island Growth and Step-Edge Barriers in Colloidal Epitaxy**
R. Ganapathy et al.
Multilayer film deposition and the templating of colloidal particles exhibit growth kinetics analogous to epitaxial growth.
>> *Perspective p. 423*
- 449 **$^{238}\text{U}/^{235}\text{U}$ Variations in Meteorites: Extant ^{247}Cm and Implications for Pb-Pb Dating**
G. A. Brennecka et al.
Variable abundances of meteorite isotopes may require correcting the lead-based age of the solar system by 5 million years.
>> *Perspective p. 422*
- 451 **Contribution of Semi-Arid Forests to the Climate System**
E. Rotenberg and D. Yakir
Semi-arid forests could cool climate by sequestering CO_2 , but could also warm it by reducing Earth's albedo.
>> *Perspective p. 418*
- 454 **Modeled Impact of Anthropogenic Warming on the Frequency of Intense Atlantic Hurricanes**
M. A. Bender et al.
Global warming may increase the frequency of intense hurricanes in the western Atlantic region during the 21st century.
>> *News story p. 399; Science Podcast*
- 459 **Requirement of Prorenin Receptor and Vacuolar H^+ -ATPase-Mediated Acidification for Wnt Signaling**
C.-M. Cruciat et al.
A dual-function protein acts as an adaptor in a major developmental signaling pathway.
- 463 **Identification of RACK1 and Protein Kinase $\text{C}\alpha$ as Integral Components of the Mammalian Circadian Clock**
M. S. Robles et al.
Rhythmic activation of signaling occurs by core components of the biological clock mechanism.
- 466 **Tuberculous Granuloma Induction via Interaction of a Bacterial Secreted Protein with Host Epithelium**
H. E. Volkman et al.
Epithelial cells play a role in tubercular granuloma formation and mycobacterial virulence.
>> *Perspective p. 417*
- 469 **Evolution of MRSA During Hospital Transmission and Intercontinental Spread**
S. R. Harris et al.
By tracing the microevolution of a pathogen, high-throughput genomics reveals person-to-person transmission events.
- 474 **Impact of Spikelets on Hippocampal CA1 Pyramidal Cell Activity During Spatial Exploration**
J. Epsztein et al.
Bursts of small voltage spikes coordinate neuron firing in the brain during spatial exploration.

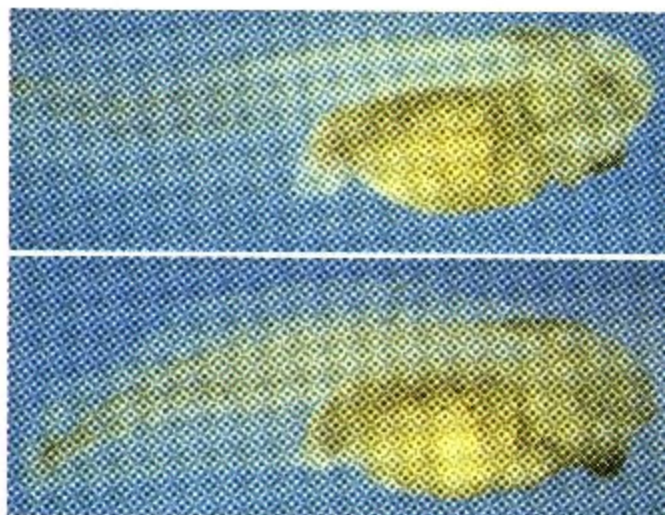
CONTENTS continued >>



page 415



pages 432 & 435



page 459