



NEWS

IN BRIEF

394 News at a glance

IN DEPTH

397 MARS LANDER CRASH ADDS TO 2020 ROVER WORRIES

European rover needs €300 million and uses parts like those on doomed Schiaparelli *By D. Clery*

398 BABY GENOME SCREENING NEEDS MORE TIME TO GESTATE

Unenthused parents and missed diseases mar pilot efforts *By J. Kaiser*

399 HUNT FOR PLANET NINE HEATS UP

Discovery of icy worlds in the distant solar system offers new clues in searches for hypothetical giant *By A. Mann*

401 CLIMATE SCIENTISTS OPEN UP THEIR BLACK BOXES TO SCRUTINY

Modelers becoming less hush-hush about tuning, the “secret sauce” that controls fine-scale processes *By P. Voosen*

402 DATA CHECK: HOW A FIGURE THAT DROVE HFC DEAL WAS BORN

Small group of researchers examined how much warming HFC controls could avert *By W. Cornwall*

403 Q&A: MENTAL HEALTH CHIEF OUTLINES PRIORITIES

Joshua Gordon juggles early criticism that NIMH tipped too far toward basic science *By M. Wadman*

FEATURES

404 PUSHING THE LIMIT

By culturing human embryos for longer than ever, Magdalena Zernicka-Goetz is revealing their “powerful beauty”—and sparking debate *By G. Vogel*

408 AFTER THE FALL

Some scientists debarred for research misconduct remain on the faculty. How that happens may surprise you *By J. Mervis*

410 Name that offender? It depends

By J. Mervis

INSIGHTS

PERSPECTIVES

412 THE FOURTH DIMENSION OF VEGETATION

100 years ago, Lennart von Post first used pollen analysis to reconstruct past ecosystems *By H. J. B. Birks et al.*
▶ VIDEO

414 THE ROAD TO SPECIATION RUNS BOTH WAYS

Chimpanzees and bonobos show signs of ancestral gene exchange, providing insight into the dynamics of speciation *By A. R. Hoelzel*
▶ REPORT P. 477

415 A FINER LOOK AT A FINE CELLULAR MESHWORK

The endoplasmic reticulum is imaged at super-resolution *By M. Terasaki*
▶ RESEARCH ARTICLE P. 433

416 VERSATILE CLUSTER ENTANGLED LIGHT

Dark excitons are used to entangle strings of hundreds of photons for quantum information processing *By H. J. Briegel*

▶ RESEARCH ARTICLE P. 434

418 PUTTING THE SPOTLIGHT ON ORGANIC SULFUR

Diverse dissolved organic sulfur compounds play an active role in ocean biogeochemistry *By N. M. Levine*

▶ REPORT P. 456

419 WARBURG MEETS EPIGENETICS

Glycolysis promotes T cell function by an epigenetic mechanism *By C. H. Patel and J. D. Powell*

▶ REPORT P. 481

POLICY FORUM

421 MAKING CLIMATE SCIENCE MORE RELEVANT

Better indicators for risk management are needed after Paris *By C. F. Kennel et al.*

BOOKS ET AL.

423 STRIKING THE RIGHT CHORD

A wide-ranging treatise seeks to reshape cities with an eye toward equality and resilience *By S. D. Campbell*

424 IS ANYONE OUT THERE?

A witty romp through the cosmos explores the scientific search for intelligent alien life *By M. Huerta*

LETTERS

425 SAVE THE WORLD'S PRIMATES IN PERIL

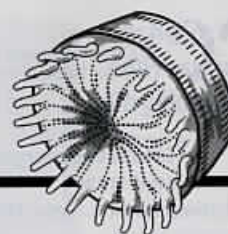
By B. Yang et al.

425 ADAPTING CHINESE CITIES TO CLIMATE CHANGE

By Q. Fang

426 ONLINE BUZZ: AUTONOMOUS VEHICLES





RESEARCH

IN BRIEF

429 From *Science* and other journals

RESEARCH ARTICLES

432 METABOLISM

Systems-level analysis of mechanisms regulating yeast metabolic flux

S. R. Hackett et al.

RESEARCH ARTICLE SUMMARY; FOR FULL TEXT:

dx.doi.org/10.1126/science.aaf2786

433 CELLULAR STRUCTURE

Increased spatiotemporal resolution reveals highly dynamic dense tubular matrices in the peripheral ER

J. Nixon-Abell et al.

RESEARCH ARTICLE SUMMARY; FOR FULL TEXT:

dx.doi.org/10.1126/science.aaf3928

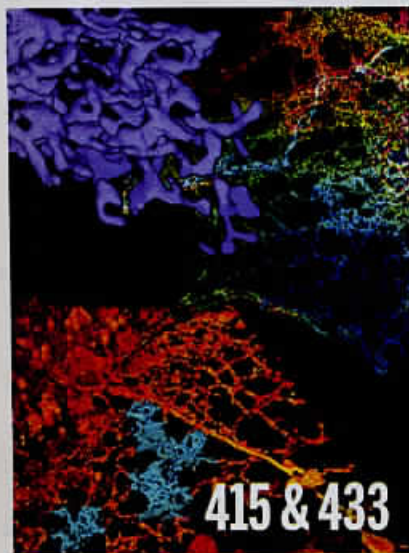
► PERSPECTIVE P. 415

434 QUANTUM PHYSICS

Deterministic generation of a cluster state of entangled photons

I. Schwartz et al.

► PERSPECTIVE P. 416



REPORTS

IMPACT CRATERS

438 Gravity field of the Orientale basin from the Gravity Recovery and Interior Laboratory Mission

M. T. Zuber et al.

► PODCAST

441 Formation of the Orientale lunar multiring basin

B. C. Johnson et al.

444 CHEMICAL KINETICS

Direct frequency comb measurement of $OD + CO \rightarrow DOCO$ kinetics

B. J. Bjork et al.

449 CATALYSIS

Super-dry reforming of methane intensifies CO_2 utilization via Le Chatelier's principle

L. C. Buelens et al.

452 CLIMATE DATA

Using climate models to estimate the quality of global observational data sets

F. Massonnet et al.

456 OCEAN CHEMISTRY

Dissolved organic sulfur in the ocean: Biogeochemistry of a petagram inventory

K. B. Ksionzek et al.

459 NEURONAL MATURATION

A disynaptic feedback network activated by experience promotes the integration of new granule cells

D. D. Alvarez et al.

465 CLIMATE CHANGE

Climate change: The 2015 Paris Agreement thresholds and Mediterranean basin ecosystems

J. Guiot and W. Cramer

468 GENE EXPRESSION

Xist recruits the X chromosome to the nuclear lamina to enable chromosome-wide silencing

C.-K. Chen et al.

472 VASCULAR DISEASE

Senescent intimal foam cells are deleterious at all stages of atherosclerosis

B. G. Childs et al.

477 APE GENETICS

Chimpanzee genomic diversity reveals ancient admixture with bonobos

M. de Manuel et al.

► PERSPECTIVE P. 414

481 IMMUNOMETABOLISM

Aerobic glycolysis promotes T helper 1 cell differentiation through an epigenetic mechanism

M. Peng et al.

► PERSPECTIVE P. 419

DEPARTMENTS

393 EDITORIAL

Dealing with details in Marrakesh

By Patricia Espinosa

514 WORKING LIFE

Bullied out of research

By Rochelle Poole

ON THE COVER



A view of the 930-kilometer Orientale impact basin on the Moon. A simulated digital terrain model is rendered 1 day after full moon. Overlain in color are gravitational anomalies

measured by the Gravity Recovery and Interior Laboratory (GRAIL) spacecraft. Red indicates stronger-than-average gravity (blue, weaker), due to the topography and density of the underlying rocks. See pages 438 and 441. Image: Ernest Wright, NASA/Goddard Space Flight Center Scientific Visualization Studio

Science Staff	390
AAAS News & Notes	427
New Products	485
Science Careers	486

SCIENCE (ISSN 0036-8075) is published weekly on Friday, except the last week in December, by the American Association for the Advancement of Science, 1200 New York Avenue, NW, Washington, DC 20005. Periodicals mail postage (publication No. 484460) paid at Washington, DC, and additional mailing offices. Copyright © 2016 by the American Association for the Advancement of Science. The title SCIENCE is a registered trademark of the AAAS. Domestic individual membership and subscription (51 issues): \$165 (\$74 allocated to subscription). Domestic institutional subscription (51 issues): \$1522; Foreign postage extra: Mexico, Caribbean (surface mail) \$55; other countries (air assist delivery) \$89. First class, airmail, student, and emeritus rates on request. Canadian rates with GST available upon request. GST #R125488122. Publications Mail Agreement Number 1069624. Printed in the U.S.A. Change of address: Allow 4 weeks, giving old and new addresses and 8-digit account number. Postmaster: Send change of address to AAAS, P.O. Box 96178, Washington, DC 20090-6178. Single-copy sales: \$15.00 current issue, \$20.00 back issue prepaid includes surface postage; bulk rates on request. Authorization to photocopy material for internal or personal use under circumstances not falling within the fair use provisions of the Copyright Act is granted by AAAS to libraries and other users registered with the Copyright Clearance Center (CCC) Transactional Reporting Service, provided that \$35.00 per article is paid directly to CCC, 222 Rosewood Drive, Danvers, MA 01923. The identification code for Science is 0036-8075. Science is indexed in the Reader's Guide to Periodical Literature and in several specialized indexes.