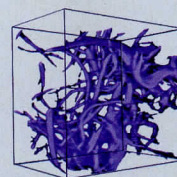


CONTENTS



808

Superstructured
biocompatible gels

16 NOVEMBER 2018 • VOLUME 362 • ISSUE 6416

SPECIAL SECTION

DIET AND HEALTH

INTRODUCTION

762 Optimizing the diet

REVIEWS

764 Dietary fat: From foe to friend?
D. S. Ludwig et al.

770 A time to fast *A. Di Francesco et al.*
► PODCAST

776 The gut microbiota at the
intersection of diet and human health
C. L. Gentile and T. L. Weir

781 Swifter, higher, stronger: What's on the
menu? *L. M. Burke and J. A. Hawley*

ON THE COVER



The millennials may be onto something. Their favored avocado toast features a mixture of healthy fats, seeds, and grains recommended by nutrition experts in a consensus reading of available scientific

studies. This special issue explores what we know—and what we need to learn—about defining a healthy diet that can sustain a strong body and protect against age-associated diseases. See page 762. Photo: Scott Suchman; Styling: Nichole Bryant



NEWS

IN BRIEF

728 News at a glance

IN DEPTH

731 VOTE HERALDS FRESH START FOR SCIENCE PANEL

Democratic win of House of Representatives will bring new tone to research issues

By J. Mervis

► PODCAST

733 ERUPTION MADE 536 'THE WORST YEAR TO BE ALIVE'

Core from glacier reveals the Icelandic volcano that plunged Europe into darkness *By A. Gibbons*

► PODCAST

734 OBESITY GIVES UNEXPECTED BOOST TO ANTICANCER DRUGS

Drugs revive immune cells exhausted by obesity hormone *By J. Kaiser*

735 FRESH FIGHTS ROIL EVIDENCE-BASED MEDICINE GROUP

Expelled Cochrane co-founder Peter Gøtzsche is suspended as head of the Nordic Cochrane Centre

By G. Vogel

736 REPROGRAMMED CELLS COULD TACKLE BRAIN DAMAGE

Turning astrocytes into neurons improves symptoms in preliminary mouse studies *By K. Servick*

737 LARGE GALAXY FOUND LURKING ON THE MILKY WAY'S FAR SIDE

Antlia 2 rivals the Large Magellanic Cloud in size but is strangely dim, a puzzle for theorists

By A. Mann

FEATURE

738 ICE AGE IMPACT

A large asteroid struck Greenland in the time of humans. How did it affect the planet? *By P. Voosen*

► VIDEO; *SCI. ADV. RESEARCH ARTICLE BY K. H. KJÆR ET AL. 10.1126/sciadv.aar8173*

INSIGHTS

PERSPECTIVES

744 LIGHTING UP THE NIGHTTIME

Artificial light at night needs to be reduced to limit negative environmental impacts *By K. J. Gaston*

746 ENDOTHELIAL CELL TRANSITIONS

Are endothelial-to-mesenchymal transitions in various vascular pathologies a consequence, cause, or defense? *By E. Dejana and M. G. Lampugnani*

748 A TARGET TO SUPPRESS INFLAMMATION

A small-molecule inhibitor of the OGG1 DNA glycosylase has anti-inflammatory effects

By L. D. Samson

► REPORT P. 834

749 CELL TYPES BEHAVING IN THEIR NATURAL HABITAT

Defining cell types in situ connects gene expression, anatomy, and function during certain behaviors

By B. Tasic and P. R. Nicovich

► RESEARCH ARTICLE P. 792

750 POLARIMETRY ENABLED BY NANOPHOTONICS

Nanoantenna and plasmonic structures can be used to measure light polarization *By A. Martínez*

752 PAUL G. ALLEN (1953–2018)

Cofounder of Microsoft, visionary, and philanthropist *By R. Horwitz et al.*

POLICY FORUM

753 PREVENTING CHEMICAL WEAPONS AS SCIENCES CONVERGE

Focus must extend beyond 20th-century technologies *By M. Crowley et al.*

BOOKS ET AL.

756 APPROACHING THE SINGULARITY

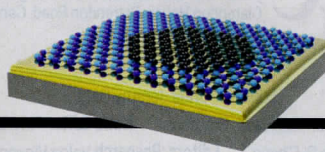
New data, old rivalries, and enduring questions fill a welcome overview of black hole research *By J. Schnittman*

CREDITS: (TOP) R. FREEMAN ET AL.; (BOTTOM) PHOTO: SCOTT SUCHMAN; STYLING: NICHOLE BRYANT

CONTENTS

817

Single-crystal
hBN films



16 NOVEMBER 2018 • VOLUME 362 • ISSUE 6416

757 A PHYSICIST'S FINAL REFLECTIONS

An unfinished tome reveals the late Stephen Hawking's musings on life's biggest mysteries *By A. Robinson*

LETTERS

758 CLIMATE CHANGE DRIVES TREE MORTALITY

By T. Klein and H. Hartmann

758 HALT SPECULATION ON U.S. EMBASSY IN CUBA

By M. J. Valdés-Sosa and K. R. Foster

759 STANDARDIZING RETURN OF PARTICIPANT RESULTS

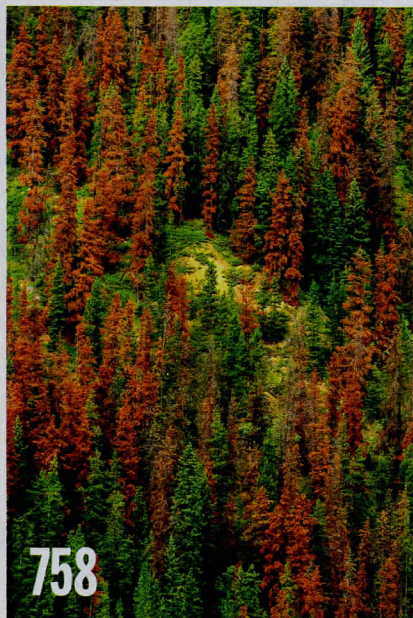
By J. R. Botkin et al.

760 TECHNICAL COMMENT ABSTRACTS

RESEARCH

IN BRIEF

788 From *Science* and other journals



RESEARCH ARTICLES

791 CELL METABOLISM

SFXN1 is a mitochondrial serine transporter required for one-carbon metabolism *N. Kory et al.*

RESEARCH ARTICLE SUMMARY; FOR FULL TEXT:
[dx.doi.org/10.1126/science.aat9528](https://doi.org/10.1126/science.aat9528)

792 NEUROGENOMICS

Molecular, spatial, and functional single-cell profiling of the hypothalamic preoptic region *J. R. Moffitt et al.*

RESEARCH ARTICLE SUMMARY; FOR FULL TEXT:
[dx.doi.org/10.1126/science.aau5324](https://doi.org/10.1126/science.aau5324)

► PERSPECTIVE P. 749

793 NEURODEVELOPMENT

In vivo modeling of human neuron dynamics and Down syndrome *R. Real et al.*

RESEARCH ARTICLE SUMMARY; FOR FULL TEXT:
[dx.doi.org/10.1126/science.aau1810](https://doi.org/10.1126/science.aau1810)

794 TROPICAL STORMS

Dominant effect of relative tropical Atlantic warming on major hurricane occurrence *H. Murakami et al.*

799 ORGANIC CHEMISTRY

Heterobiaryl synthesis by contractive C-C coupling via P(V) intermediates *M. C. Hilton et al.*

REPORTS

804 POLYMERS

Templated nanofiber synthesis via chemical vapor polymerization into liquid crystalline films *K. C. K. Cheng et al.*

808 DYNAMIC MATERIALS

Reversible self-assembly of superstructured networks *R. Freeman et al.*

813 BIOHYBRID MICROBES

Light-driven fine chemical production in yeast biohybrids *J. Guo et al.*

817 NANOMATERIALS

Wafer-scale single-crystal hexagonal boron nitride film via self-collimated grain formation *J. S. Lee et al.*

821 ULTRAFAST DYNAMICS

Beyond the molecular movie: Dynamics of bands and bonds during a photoinduced phase transition *C. W. Nicholson et al.*

825 NETWORK SCIENCE

Quantifying reputation and success in art *S. P. Fraiberger et al.*

829 MASS SPECTROMETRY

Protein assemblies ejected directly from native membranes yield complexes for mass spectrometry *D. S. Chorev et al.*

834 INFLAMMATION

Small-molecule inhibitor of OGG1 suppresses proinflammatory gene expression and inflammation *T. Visnes et al.*

► PERSPECTIVE P. 748

839 BIOTECHNOLOGY

Programmed DNA destruction by miniature CRISPR-Cas14 enzymes *L. B. Harrington et al.*



DEPARTMENTS

727 EDITORIAL

Reform and cooperation in China
By Manfred Horvat

862 WORKING LIFE

Climbing out of the bottle
By Elizabeth Marchio

Science Staff	724
New Products	846
Science Careers	847

SCIENCE (ISSN 0036-8075) is published weekly on Friday, except last week in December, by the American Association for the Advancement of Science, 1200 New York Avenue, NW, Washington, DC 20005. Periodicals mail postage (publication No. 484460) paid at Washington, DC, and additional mailing offices. Copyright © 2018 by the American Association for the Advancement of Science. The title SCIENCE is a registered trademark of the AAAS. Domestic individual membership, including subscription (12 months): \$165 (\$74 allocated to subscription). Domestic institutional subscription (51 issues): \$1808; Foreign postage extra: Mexico, Caribbean (surface mail) \$55; other countries (air assist delivery): \$89. First class, airmail, student, and emeritus rates on request. Canadian rates with GST available upon request, GST #125488122. Publications Mail Agreement Number 1069624. Printed in the U.S.A. Change of address: Allow 4 weeks, giving old and new addresses and 8-digit account number. Postmaster: Send change of address to AAAS, P.O. Box 96178, Washington, DC 20090-6178. Single-copy sales: \$15 each plus shipping and handling; bulk rate on request. Authorization to reproduce material for internal or personal use under circumstances not falling within the fair use provisions of the Copyright Act is granted by AAAS to libraries and others who use Copyright Clearance Center (CCC) Pay-Per-Use services provided that \$35.00 per article is paid directly to CCC, 222 Rosewood Drive, Danvers, MA 01923. The identification code for *Science* is 0036-8075. *Science* is indexed in the *Reader's Guide to Periodical Literature* and in several specialized indexes.

CREDITS: (CLOCKWISE FROM TOP) J. S. LEE ET AL.; K. C. K. CHENG ET AL.; ALL CANADA PHOTOS/ALAMY; STOCK PHOTO