

CONTENTS

9 May 2019 / Vol 569 / Issue No 7755

THIS WEEK

EDITORIALS

159 EQUALITY

Diversity efforts demand resolve

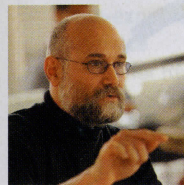
Measuring equality gaps in science is crucial, but so is acting on the results

159 SCIENCE ADVICE

Support the Jasons

Give secure backing to the elite science panel that guides the US government

WORLD VIEW



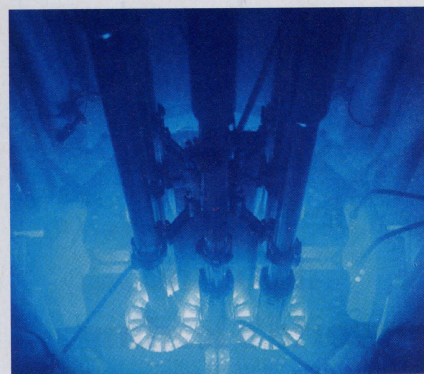
161 **Don't let industry write the rules for AI**

Yochai Benkler

Society must fight back against the tech companies aiming to bend regulations

RESEARCH HIGHLIGHTS

162 SELECTIONS FROM THE SCIENTIFIC LITERATURE



Blue glow from a vacuum / Dinosaurs in a flap / Moon magma theory / Penguin colony collapses / Hydrogen from sunlight / AI shows Saturn's secrets

SEVEN DAYS

164 THE NEWS IN BRIEF

Testosterone ruling / Facebook opens up to social scientists / Space firm pays fine / South Africa's publishing trends

CAREERS

297 POLICY

The hidden costs of visas

Five researchers share how their careers were shaped by immigration policies

NEWS IN FOCUS

167 DECOMPOSITION

Britain to open its first 'body farm' for forensic studies of human remains

168 MISCONDUCT

US science academy presses ahead with plan to expel sexual harassers

169 Q&A

Kelvin Droegemeier talks to *Nature* about science in the Trump White House

170 IMMUNOTHERAPY

Experimental cell therapies could soon be on sale in elite Chinese hospitals

171 BIODIVERSITY

Human activities put one million species at risk of extinction, UN reports

172 GENETICS

Cannabis analysis reveals research strains differ from commercial ones

FEATURES

174 SCIENCE FUNDING

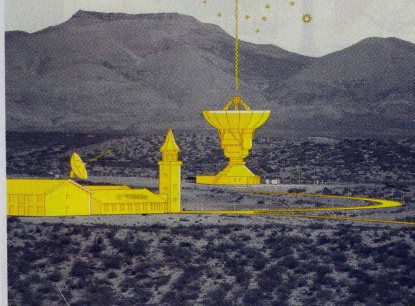
China charts a path to Europe

Why investments in central and eastern Europe are raising concerns in the West

COLLABORATIONS

Beijing's gambit

The scientific impacts of Chinese infrastructure expansion play out in South America **PAGE 177**



SUPPLEMENTS

S1 ~ OUTLINE

Biosimilars: mimicking biological drugs

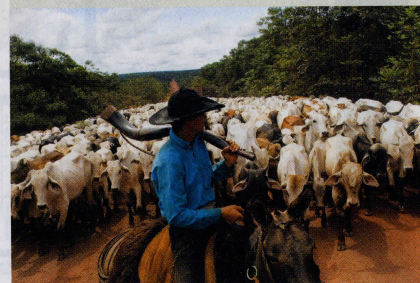
Expiring patents mean that copycat biologics are now shifting into top gear

COMMENT

SUSTAINABILITY

Three steps to fix food

Map, model and manage a global network that links agriculture, biodiversity and diets, say Guido Schmidt-Traub and colleagues **PAGE 181**



184 POLICY

Reboot ethics governance in China

Ruipeng Lei et al.

The announcement of genetically modified babies creates an opportunity to overhaul the nation's science

BOOKS & ARTS

188 ENVIRONMENTAL HISTORY

Worlds beneath our feet

Huw Lewis-Jones

190 CREATIVITY

Music of the spheres and cells

Elie Dolgin

191 BOOKS IN BRIEF

CORRESPONDENCE

192 More views on statistical significance / Cut risk of chemical explosions / Night-time olive harvest kills birds

OBITUARY

193 **David J. Thouless (1934–2019)**

Andrea Taroni

FUTURES

302 **Brick city**

Robert S Wilson



CONTENTS

9 May 2019 / Vol 569 / Issue No 7755

RESEARCH

NEW ONLINE

195 Papers published this week at nature.com

NEWS & VIEWS

196 NEUROSCIENCE

Why brown fat has a lot of nerve

A protein that regulates the innervation of brown adipose tissue

Rejji Kuruvilla [SEE ARTICLE P.229](#)

197 TRANSCRIPTION

Gene-expression maps fall into place

Method for RNA profiling of tissues retains spatial information

Samantha A Morris

199 NANOTECHNOLOGY

A role for optics in AI hardware

Tackling the energy efficiency of computing technology

Geoffrey W Burr [SEE ARTICLE P.208](#)

200 OBESITY

Rural areas drive the global weight gain

A comprehensive examination of worldwide BMI trends

Barry M Popkin [SEE LETTER P.260](#)

201 GLOBAL HYDROLOGY

A river that flows free connects up in 4D

Global maps of free-flowing rivers

N LeRoy Poff [SEE ARTICLE P.215](#)

ARTICLES

203 ATOMIC PHYSICS Imaging individual

barium atoms in solid xenon for barium tagging in nEXO

nEXO Collaboration

208 NANOTECHNOLOGY All-optical

spiking neurosynaptic networks with self-learning capabilities

J Feldmann, N Youngblood, C D Wright, H Bhaskaran & W H P Pernice

[SEE N&V P.199](#)

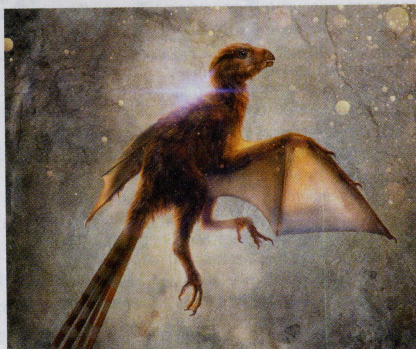
215 GLOBAL HYDROLOGY Mapping the world's free-flowing rivers

G Grill et al. [SEE N&V P.201](#)

222 STEM CELLS The bone marrow microenvironment at single-cell resolution

A N Tikhonova et al.

229 NEUROSCIENCE Innervation of thermogenic adipose tissue via a



ON THE COVER

A clash of wings

The newly identified dinosaur *Ambopteryx longibrachium* is described in this issue by Min Wang and colleagues. *Ambopteryx* dates from the Upper Jurassic period some 163 million years ago and, unlike most other scansoriopterygids, had both feathers and bat-like membranous wings supported by an accessory bone called the styloform element. [PAGE 256](#)

calsyntenin 3 β -S100b axis

X Zeng et al. [SEE N&V P.196](#)

236 CELL BIOLOGY Externalized histone H4 orchestrates chronic inflammation by inducing lytic cell death

C Silvestre-Roig et al.

LETTERS

241 ASTROPHYSICS Collapsars as a major source of r-process elements

D M Siegel, J Barnes & B D Metzger

245 BATTERIES Aqueous Li-ion battery enabled by halogen conversion–intercalation chemistry in graphite

C Yang et al.

251 CONDENSED-MATTER PHYSICS Nanosecond X-ray diffraction of shock-compressed superionic water ice

M Millot et al.

256 PALAEOLOGY A new Jurassic scansoriopterygid and the loss of

membranous wings in theropod dinosaurs

M Wang, J K O'Connor, X Xu & Z Zhou

260 OBESITY Rising rural body-mass index is the main driver of the global obesity epidemic in adults

NCD Risk Factor Collaboration

[SEE N&V P.200](#)

265 MOLECULAR BIOLOGY *Arabidopsis* FLL2 promotes liquid–liquid phase separation of polyadenylation complexes

X Fang et al.

270 CANCER CD8⁺ T cells regulate tumour ferroptosis during cancer immunotherapy

W Wang et al.

275 CANCER LGL2 rescues nutrient stress by promoting leucine uptake in ER⁺ breast cancer

Y Saito et al.

280 MOLECULAR NEUROSCIENCE Visualization of clustered protocadherin neuronal self-recognition complexes

J Brasch et al.

284 STRUCTURAL BIOLOGY Structural basis of ligand recognition at the human MT₁ melatonin receptor

B Stauch et al.

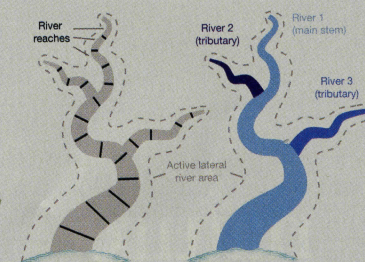
289 STRUCTURAL BIOLOGY XFEL structures of the human MT₂ melatonin receptor reveal the basis of subtype selectivity

L C Johansson et al.

GLOBAL HYDROLOGY

River map

Only 23% of rivers longer than 1,000 km flow uninterrupted. [PAGE 215](#)



COVER IMAGE: CHUNG-TAT CHEUNG